



***RICHARDSON***®

STOCK | 2024



**RICHARDSON®**

We're Richardson.

We create high-quality headwear and apparel for teams, retailers, brands, and promotional partners seeking unbeatable service, renowned craftsmanship, and innovative products.

We've built our business on relationships by offering high-touch, friendly service that centers on human connection.

Our products are designed to deliver the quality that players, partners, and brands demand when bringing their vision to life. We represent a classic, timeless style and seek to lift ourselves above cultural trends to fully represent the values we've built our reputation on.

We carry our heritage with pride and craft products that are designed with the satisfaction of our customers in mind. We believe in the characteristics that have made us who we are, and we will represent them proudly for decades to come.

***Wear the best. Since 1970.***

## CONTENTS

■ ON-FIELD	1
■ UMPIRE & OFFICIAL	12
■ PERFORMANCE	14
■ MESH BACK	20
■ CASUAL	30
■ R-SERIES	38
■ OUTDOOR	42
■ RECYCLED	52
■ WORKWEAR	55
■ CAMO & BLAZE	57
■ BRIMMED	64
■ VISORS	68
■ BEANIES	71
■ FIXTURES/SIZING	79
□ GLOSSARY/INDEX	80



# ON-FIELD

# PTS

PERFORMANCE TEAM SERIES  
HEADWEAR

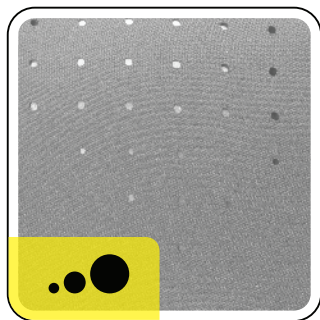
The Performance Team Series is Richardson's collection of premium, on-field products designed to be the player's choice. From game-ready headwear and uniforms to performance apparel and accessories, each item was created with insights from players at the highest levels of the game and represents our 54-year commitment to excellence.

*Play Ball!*



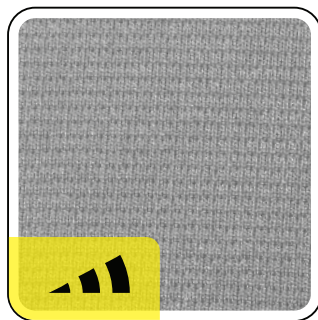
## FABRICS

Creating performance products intended to be the player's choice starts with premium, high-performance materials. Each Performance Team Series fabric is designed for performance first while also offering a look and feel that's authentic to the game. From modern woven stretch to the traditional wool look of poly-serge, Richardson PTS fabrics are designed to play ball.



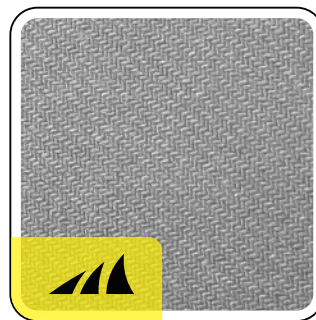
### IGNITE LT

Ignite LT is durable, lightweight, and stretches for fit and comfort while wicking away moisture with Stay-Dri technology



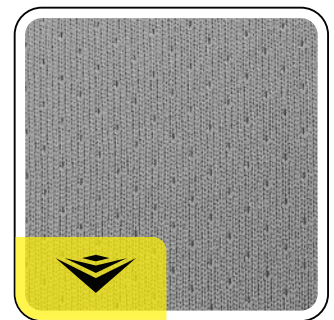
### PULSE

Pulse performance fabric improves fit and wicks away moisture with Stay-Dri technology



### SURGE

Surge delivers the classic baseball look and feel of wool serge but with Stay-Dri moisture management and improved flexibility



### MATRIX

Matrix pin-dot mesh stretches for an improved fit that enhances ventilation while keeping players dry with Stay-Dri technology

# PTS30

IGNITE LT R-FLEX  U-FORM VISOR  WICKING

The PTS30 is a game-changer under the lights or peak summer sunshine. Constructed in a Mid Pro shape from our lightest-weight Ignite LT fabric, this cap features laser-vented back panels for maximum comfort and breathability. And it's available in three R-Flex sizes for flexible sizing.



**Solid Red**  
3D Embroidery

**STYLE:** 6 Panel  
**PROFILE:** Mid Pro

**BILL:** U-Form  
**SWEATBAND:** Stay-Dri

**FABRIC:** Ignite LT

**COMPOSITION:** 98% Polyester/2% Spandex

**FIT:** R-Flex

**SIZE:**

XS-SM (6 5/8 - 7)

SM-MD (7 - 7 1/4)

LG-XL (7 3/8 - 7 5/8)



# PTS50

MATRIX R-FLEX  U-FORM VISOR  WICKING

Cut from an advanced performance micro-mesh fabric, our Full Pro PTS50 is made for the heat of competition. Designed to match the Matrix mesh used in our PTS uniforms, it features a Stay-Dri sweatband three R-Flex sizes for flexible sizing.



Combo White/Purple  
3D Embroidery

**STYLE:** 6 Panel  
**PROFILE:** Full Pro  
**BILL:** U-Form  
**SWEATBAND:** Stay-Dri  
**FABRIC:** Matrix  
**COMPOSITION:** 100% Polyester

**FIT:** R-Flex  
**SIZE:**  
XS-SM (6 5/8 - 7)  
SM-MD (7 - 7 1/4)  
LG-XL (7 3/8 - 7 5/8)



# PTS20

PULSE R-FLEX  U-FORM VISOR  WICKING

Tested and approved by players at every level of the game, the PTS20 is our best-selling on-field performance cap. Featuring Pulse fabric with Stay-Dri technology for the ultimate in comfort and breathability, and a shapeable U-Form bill for the perfect custom curve.



**Solid Navy**  
3D Embroidery

**STYLE:** 6 Panel  
**PROFILE:** Mid Pro  
**BILL:** U-Form  
**SWEATBAND:** Stay-Dri  
**FABRIC:** Pulse  
**COMPOSITION:** 98% Polyester/2% Spandex

**FIT:** R-Flex  
**SIZE:**  
Y (6 3/8 - 6 5/8)  
XS-SM (6 5/8 - 7)  
SM-MD (7 - 7 1/4)  
LG-XL (7 3/8 - 7 5/8)



[Y] = Available in youth size.

# PTS20M

PULSE MESH BACK R-FLEX  U-FORM VISOR  WICKING

The PTS20M delivers the same best-selling performance as the original PTS20, but with enhanced airflow thanks to its mesh back construction. Featuring Pulse fabric with Stay-Dri technology for the ultimate in comfort and breathability, and a shapeable U-Form bill for the perfect custom curve.

**STYLE:** 6 Panel  
**PROFILE:** Mid Pro  
**BILL:** U-Form  
**SWEATBAND:** Stay-Dri  
**FABRIC:** Pulse/Sportmesh  
**COMPOSITION:**  
 FRONT: 98% Polyester/2% Spandex  
 BACK: 95% Polyester/5% PU span

**FIT:** R-Flex  
**SIZE:**  
 XS-SM (6 5/8 - 7)  
 SM-MD (7 - 7 1/4)  
 LG-XL (7 3/8 - 7 5/8)



Combo White/Black  
3D Embroidery



# PTS65

SURGE FITTED  U-FORM VISOR  WICKING

With a classic Full Pro baseball look intended to satisfy the traditionalists among us, our PTS65 is made of durable Surge performance-spun polyester, designed to replicate wool serge. Surge keeps players cool, dry, and comfortable on the field, and is available in twelve fitted sizes to ensure an ideal fit.

**STYLE:** 6 Panel  
**PROFILE:** Full Pro  
**BILL:** U-Form  
**SWEATBAND:** Standard  
**FABRIC:** Surge  
**COMPOSITION:** 100% Polyester

**FIT:** Fitted  
**SIZE:** 6 5/8 - 8 (12 sizes in 1/8 increments)



Solid Royal  
3D Embroidery



# 632 NEW ..●●

## LASER PERF R-FLEX SNAPBACK WICKING

Under the bright lights of the big game or putting in work in the offseason, the 632 is a performance take on our classic six-panel, Mid Pro baseball cap. A laser-perforated body made from Ignite LT performance fabric ensures maximum airflow, while a Stay-Dri sweatband keeps players dry.



**Combo Black/Red**  
3D Embroidery

**STYLE:** 6 Panel  
**PROFILE:** Mid Pro  
**BILL:** Precurved  
**SWEATBAND:** Stay-Dri  
**FABRIC:** Ignite LT  
**COMPOSITION:** 98% Polyester/2% Spandex

**FIT:** R-Flex Adjustable  
**CLOSURE:** Snapback  
**SIZE:**  
SM (6 1/2 - 7 1/8)  
MD-LG (7 1/8 - 7 3/4)



# 634 ..●●

## IGNITE LT R-FLEX ADJUSTABLE MICRO HOOK & LOOP WICKING

When the game is on the line, you want your players' focus on the field, not what's on their heads. Constructed with a Mid Pro crown, micro hook-and-loop backstrap, and our lightweight performance fabric, Ignite LT, the 634 delivers performance and comfort when it counts.



**Alternate White/Navy**  
3D Embroidery

**STYLE:** 6 Panel  
**PROFILE:** Mid Pro  
**BILL:** Precurved  
**SWEATBAND:** Stay-Dri  
**FABRIC:** Ignite LT  
**COMPOSITION:** 98% Polyester/2% Spandex

**FIT:** R-Flex Adjustable  
**CLOSURE:** Micro Hook-and-Loop Backstrap  
**SIZE:**  
SM (6 1/2 - 7 1/8)  
MD-LG (7 1/8 - 7 3/4)





# 514

## SURGE ADJUSTABLE

For those seeking a traditional uniform style, our 514 is one of our best-selling on-field caps. This six-panel features two sizing options and an adjustable hook-and-loop closure so you're sure to find a perfect fit for players at any level of the game.



**Solid Navy**  
3D Embroidery

**STYLE:** 6 Panel  
**PROFILE:** Mid Pro  
**BILL:** Precurved  
**SWEATBAND:** Standard  
**FABRIC:** Surge  
**COMPOSITION:** 100% Polyester

**FIT:** Adjustable  
**CLOSURE:** Hook-and-Loop Backstrap  
**SIZE:**  
SM (6 1/2 - 7 1/8)  
MD-LG (7 - 7 3/4)



# 585

## ACRYLIC-WOOL BLEND R-FLEX

Featuring a classic six-panel construction, this cap is cut from a blend of natural wool and acrylic stretch-fit fabric. Bringing together the best of heritage baseball textiles and traditional, on-field design—the 585 is a versatile cap suitable for players at all levels of the game.



**Solid Orange**  
3D Embroidery

**STYLE:** 6 Panel  
**PROFILE:** Mid Pro  
**BILL:** Precurved  
**SWEATBAND:** Comfort Stretch  
**FABRIC:** Acrylic Wool Spandex Blend  
**COMPOSITION:**  
83% Acrylic/15% Wool/2% Spandex

**FIT:** R-Flex  
**SIZE:**  
XS-SM (6 1/2 - 7)  
SM-MD (7 - 7 1/4)  
LG-XL (7 3/8 - 7 5/8)



<sup>1</sup> SOLID WHITE COMPOSITION: 100% Acrylic

# 172

## PULSE SPORTMESH R-FLEX

Pulse fabric front panels make the 172 cool, comfortable, and ready for action. A Sportmesh back, contrast stitching, and a precurved bill give an athletic look, while Stay-Dri wicking keeps working in all conditions.

**STYLE:** 6 Panel  
**PROFILE:** Mid Pro  
**BILL:** Precurved  
**SWEATBAND:** Comfort Stretch  
**FABRIC:** Pulse/Sportmesh  
**COMPOSITION:**  
 FRONT: 98% Polyester/2% Spandex  
 BACK: 95% Polyester/5% Spandex

**FIT:** R-Flex  
**SIZE:**  
 XS-SM (6 5/8 - 7)  
 SM-MD (7 - 7 1/4)  
 LG-XL (7 3/8 - 7 5/8)



Tri Cardinal/White/Black  
3D Embroidery



# 185

## TWILL R-FLEX

On the field, in the dugout, or cheering from the bleachers, our 185 is a versatile baseball cap made for any occasion. Its six-panel, Mid Pro crown offers classic ballcap style, while R-Flex stretch makes for simple sizing.

**STYLE:** 6 Panel  
**PROFILE:** Mid Pro  
**BILL:** Precurved  
**SWEATBAND:** Comfort Stretch  
**FABRIC:** Stretch Cotton Polyester  
**COMPOSITION:**  
 62% Cotton/36% Polyester/2% Spandex

**FIT:** R-Flex  
**SIZE:**  
 XS-SM (6 1/2 - 7)  
 SM-MD (7 - 7 1/4)  
 LG-XL (7 3/8 - 7 5/8)



Solid Maroon  
3D Embroidery



# 212

## PRO TWILL SNAPBACK

A throwback to the classic style of 90s-era snapback baseball caps, our 212 is an authentic six-panel Mid Pro shape ideal for on-field play. Its cotton-poly construction combines classic style and casual comfort for an easy-going look and feel. With more than 40 colorways, two sizing options, and an adjustable snapback, our 212 is game ready.

**STYLE:** 6 Panel  
**PROFILE:** Mid Pro  
**BILL:** Precurved  
**SWEATBAND:** Standard  
**FABRIC:** Cotton-Polyester Twill  
**COMPOSITION:** 60% Cotton/40% Polyester

**FIT:** Adjustable  
**CLOSURE:** Snapback  
**SIZE:**  
 SM (6 1/2 - 7 1/8)  
 MD-LG (7 - 7 3/4)



**Combo Royal/Gold**  
3D Embroidery



# 214

## PRO TWILL HOOK-AND-LOOP

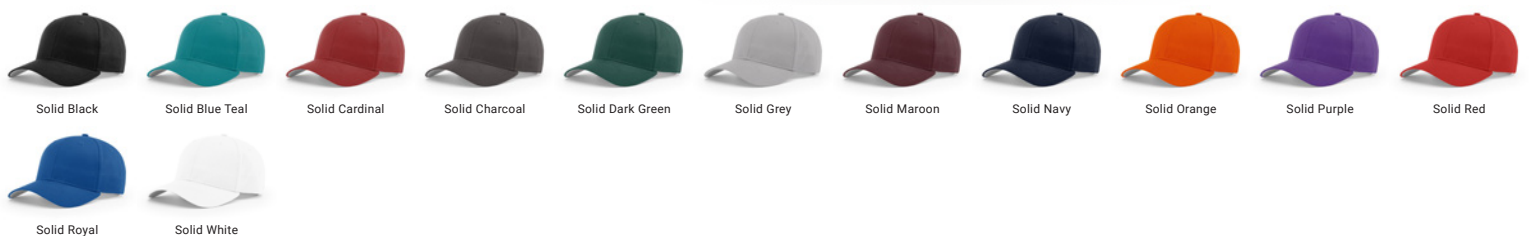
Just like our 212 snapback, the 214 combines the classic sport style and comfort of cotton-poly twill in a classic Mid Pro baseball cap design, but with a hook-and-loop adjustable backstrap. Featuring two sizes to ensure players of all ages can find their perfect fit.

**STYLE:** 6 Panel  
**PROFILE:** Mid Pro  
**BILL:** Precurved  
**SWEATBAND:** Standard  
**FABRIC:** Cotton-Polyester Twill  
**COMPOSITION:** 60% Cotton/40% Polyester

**FIT:** Adjustable  
**CLOSURE:** Hook-and-Loop Backstrap  
**SIZE:**  
 SM (6 1/2 - 7 1/8)  
 MD-LG (7 - 7 3/4)



**Solid Red**  
3D Embroidery



# 414

## PRO MESH ADJUSTABLE

Day and night, inning after inning, this classic baseball cap is made for competition at every level. Constructed with our Pro Mesh fabric, an adjustable hook-and-loop backstrap, and a Standard sweatband, it keeps players cool, calm, and collected so they can focus on the game.

**STYLE:** 6 Panel  
**PROFILE:** Mid Pro  
**BILL:** Precurved  
**SWEATBAND:** Standard  
**FABRIC:** Pro Mesh  
**COMPOSITION:** 100% Polyester

**FIT:** Adjustable  
**CLOSURE:** Hook-and-Loop Backstrap  
**SIZE:**  
 SM (6 1/2 - 7 1/8)  
 MD-LG (7 - 7 3/4)



Combo Navy/Red  
3D Embroidery



Solid Black

Solid Dark Green

Solid Grey

Solid Maroon

Solid Navy

Solid Red

Solid Royal

Combo Grey/Black

Combo Grey/Navy

Combo Navy/Red

Combo Red/Black

Combo White/Black

Combo White/Navy

# 495

## PRO MESH R-FLEX

Like its adjustable counterpart, the 414, the lightweight and breathable 495 Pro Mesh R-Flex is made to keep players cool and comfortable on the field, in the dugout, and long after the final out. Made from our Pro Mesh fabric, it features R-Flex stretch for simple sizing and a versatile fit.

**STYLE:** 6 Panel  
**PROFILE:** Mid Pro  
**BILL:** Precurved  
**SWEATBAND:** Comfort Stretch  
**FABRIC:** Pro Mesh  
**COMPOSITION:** 100% Polyester

**FIT:** R-Flex  
**SIZE:**  
 XS-SM (6 1/2 - 7)  
 SM-MD (7 - 7 1/4)  
 LG-XL (7 3/8 - 7 5/8)



Solid Grey  
3D Embroidery



Solid Black

Solid Dark Green

Solid Grey

Solid Navy

Solid Red

Solid Royal

Solid White

Combo Black/Red

Combo Grey/Black

Combo Grey/Navy

Combo Navy/Red

Combo White/Black

Combo White/Navy

Combo White/Red

Combo White/Royal

# 707

## PULSE VISOR WITH PRO MESH WICKING

Constructed with our lightweight Pulse performance fabric accented with Pro Mesh, the 707 offers solid protection from the glare of the sun while still allowing you to catch a breeze in your hair as you chase down that fly ball.

**STYLE:** Visor  
**BILL:** Precurved  
**SWEATBAND:** Stay-Dri  
**FABRIC:** Pulse/Pro Mesh  
**COMPOSITION:**  
FRONT: 98% Polyester/2% Spandex  
BACK: 100% Polyester

**FIT:** Adjustable  
**CLOSURE:** Hook-and-Loop Backstrap  
**SIZE:** OSFM



Solid Red  
3D Embroidery



# 709

## IGNITE LT VISOR WICKING

Lightweight, versatile, and breathable, the 709 is made using our Ignite LT performance fabric for enhanced durability and an improved fit. It features a 2" front panel, a Stay-Dri sweatband, and a micro hook-and-loop backstrap with D-ring to dial-in the perfect fit.

**STYLE:** Visor  
**BILL:** Precurved  
**SWEATBAND:** Stay-Dri  
**FABRIC:** Ignite LT  
**COMPOSITION:** 98% Polyester/2% Spandex

**FIT:** Adjustable  
**CLOSURE:** Micro Hook-and-Loop Backstrap with D-Ring  
**SIZE:** OSFM



Solid Black  
3D Embroidery





# UMPIRE

## SURGE



**FABRIC:** Surge or Acrylic-Wool Blend<sup>1</sup>

**VISOR:** Precurved

**SHAPE:** Mid Pro

**SWEATBAND:** Stay-Dri

STY. NO.	FIT	VISOR LGTH.	STCH. ROWS	SIZE
525	ADJUSTABLE	1½"	3	MD-LG (7 - 7 3/4)
530	FITTED	2"	4	6 5/8 - 8 (12 SIZES IN 1/8 INCREMENTS)
533 <sup>1</sup>	R-FLEX	2"	4	SM-MD (7 - 7 1/4) LG-XL (7 3/8 - 7 5/8)
535	ADJUSTABLE	2"	4	MD-LG (7 - 7 3/4)
540	FITTED	2½"	6	6 5/8 - 8 (12 SIZES IN 1/8 INCREMENTS)
543 <sup>1</sup>	R-FLEX	2½"	6	SM-MD (7 - 7 1/4) LG-XL (7 3/8 - 7 5/8)
545	ADJUSTABLE	2½"	6	MD-LG (7 - 7 3/4)
550	FITTED	2¾"	8	6 5/8 - 8 (12 SIZES IN 1/8 INCREMENTS)

**FEATURED CAP:** 550 UMPIRE SURGE 2¾" - 8 STITCH FITTED

**COLORS:** Undervisor is cap color.



Black



Navy

<sup>1</sup> 533/543 FABRIC: Acrylic-Wool Blend

## PULSE

**FABRIC:** Pulse

**VISOR:** Precurved

**SHAPE:** Mid Pro

**SWEATBAND:** Stay-Dri



STY. NO.	FIT	VISOR LGTH.	STCH. ROWS	SIZE
633	R-FLEX	2"	4	SM-MD (7 - 7 1/4) LG-XL (7 3/8 - 7 5/8)
643	R-FLEX	2½"	6	SM-MD (7 - 7 1/4) LG-XL (7 3/8 - 7 5/8)
653	R-FLEX	2¾"	8	SM-MD (7 - 7 1/4) LG-XL (7 3/8 - 7 5/8)



**COLORS:** Undervisor is cap color.



Black



Navy

**FEATURED CAP:** 653 UMPIRE PULSE 2¾" - 8 STITCH R-FLEX



OFFICIAL



# SURGE

**FABRIC:** Surge  
**VISOR:** Precurved  
**SHAPE:** Mid Pro  
**SWEATBAND:** Stay-Dri

STYLE NO.	FIT	COLOR	SIZE
420	ADJUSTABLE		OSFM

Undervisor is cap color.

FEATURED CAP: 420 REFEREE SURGE - ADJUSTABLE

# PULSE

**FABRIC:** Pulse  
**VISOR:** Precurved  
**SHAPE:** Mid Pro  
**SWEATBAND:** Stay-Dri



STYLE NO.	FIT	COLOR	SIZE
485	R-FLEX		SM-MD (7 - 7 1/4) LG-XL (7 3/8 - 7 5/8)
487	R-FLEX		SM-MD (7 - 7 1/4) LG-XL (7 3/8 - 7 5/8)

Undervisor is cap color.



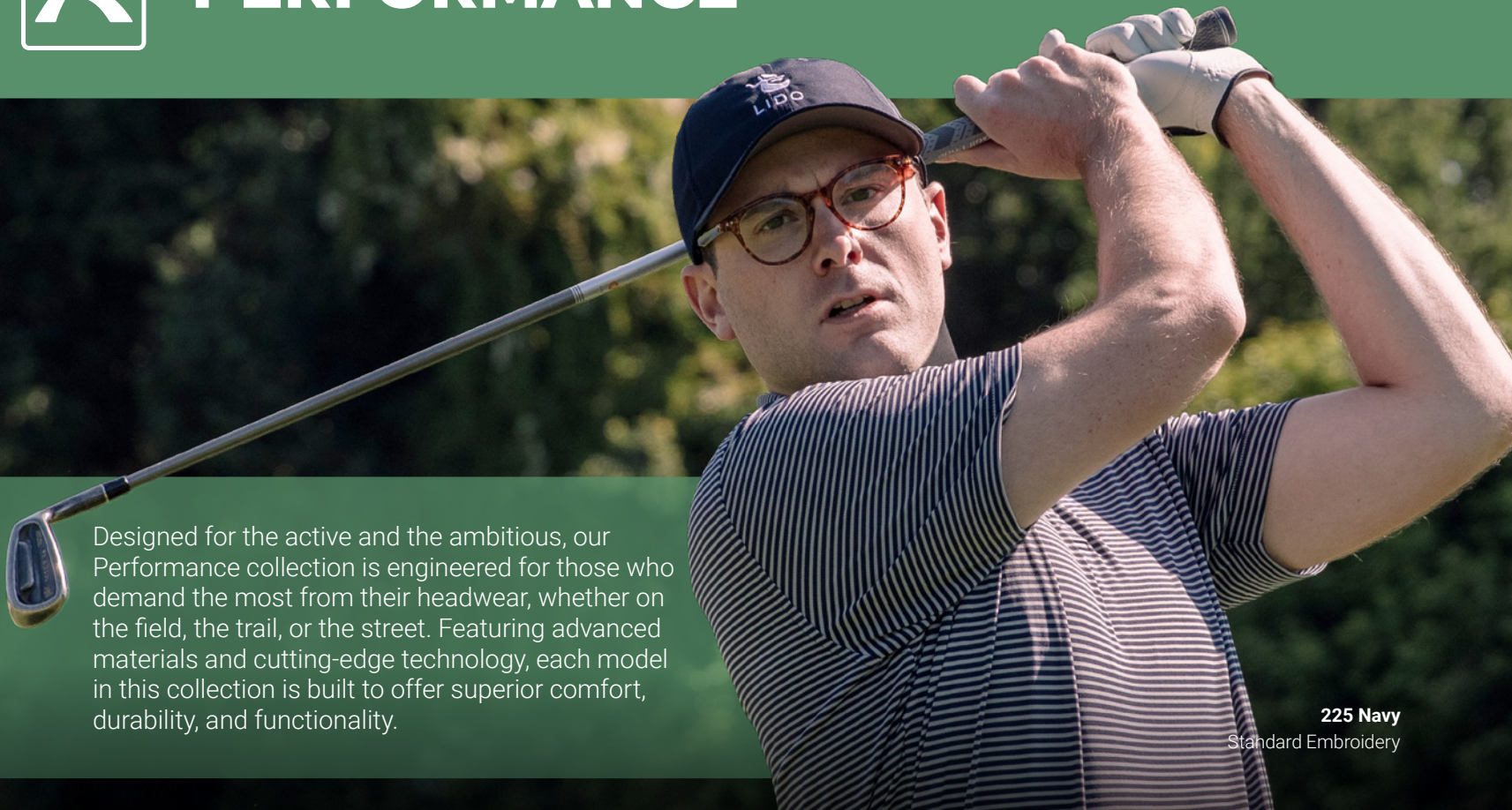
FEATURED CAP: 485 REFEREE PULSE - R-FLEX



FEATURED CAP: 487 OFFICIAL PULSE - R-FLEX



# PERFORMANCE



Designed for the active and the ambitious, our Performance collection is engineered for those who demand the most from their headwear, whether on the field, the trail, or the street. Featuring advanced materials and cutting-edge technology, each model in this collection is built to offer superior comfort, durability, and functionality.

**225 Navy**  
Standard Embroidery

## 258 **NEW**

### 5 PANEL CLASSIC ROPE CAP WICKING

Our 258 delivers exceptional comfort and all-day wearability thanks to its Stay-Dri sweatband and performance polyester fabrication. Add a braided bill rope, five-panel construction, and classic Mid Pro shape and you've got a classic rope cap made for modern performance.

**STYLE:** 5 Panel  
**PROFILE:** Mid Pro  
**BILL:** Precurved  
**SWEATBAND:** Stay-Dri  
**FABRIC:** Performance Polyester  
**COMPOSITION:** 100% Polyester

**FIT:** Adjustable  
**CLOSURE:** Snapback  
**SIZE:** OSFM



**Dark Grey/White**  
Standard Embroidery | GF834



Black/White



Dark Grey/White



Dark Olive/White



Light Blue/White



Light Grey/White



Navy/White



Red/White



White/Black



White/Navy



# 355 NEW

## LASER PERF PERFORMANCE ROPE CAP WICKING

Our 355 is a performance-forward snapback rope cap that's ready to go the distance. Its lightweight build, built-in Stay-Dri moisture management technology, and laser-perforated airflow make it an ideal cap for everything from casual wear to a full day on the golf course.

**STYLE:** 5 Panel  
**PROFILE:** Mid Pro  
**BILL:** Precurved  
**SWEATBAND:** Stay-Dri  
**FABRIC:** Nylon Cotton Blend  
**COMPOSITION:** 60% Nylon/40% Cotton

**FIT:** Adjustable  
**CLOSURE:** Snapback  
**SIZE:** OSFM



White/White-Black  
3D Embroidery



# 169 NEW

## CANNON WICKING

Inspired by the sprawling sands of Cannon Beach, with its majestic views of Haystack Rock—this performance-forward take on our 7 Panel Trucker is a Hi Pro cap presenting a modern trucker look and feel, with built-in water resistance that helps keep its shape even after getting wet.

**STYLE:** 7 Panel  
**PROFILE:** Hi Pro  
**BILL:** Flat  
**SWEATBAND:** Stay-Dri  
**FABRIC:** Stretch Performance Polyester  
**COMPOSITION:** 98% Polyester/2% Spandex

**FIT:** Adjustable  
**CLOSURE:** Snapback  
**SIZE:** OSFM



Grey  
Rubber Patch | GF829



# 225

## CASUAL PERFORMANCE

LITE  WICKING  UPF PROTECTION

Featuring Stay-Dri moisture management technology in the crown and sweatband, this cap is built to wick away sweat, while its UPF 35 rating makes it a go-to accessory for active adventures on sunny days. A lightly structured, low-profile crown shape delivers a tailored yet casual look.



Dark Green  
Embroidered Patch

**STYLE:** 6 Panel

**PROFILE:** Low Pro

**BILL:** Precurved

**SWEATBAND:** Stay-Dri

**FABRIC:** Lite

**COMPOSITION:** 100% Polyester

**FIT:** Adjustable

**CLOSURE:** Hook-and-Loop Backstrap

**SIZE:** OSFM



# 220

## RELAXED PERFORMANCE

LITE  WICKING  UPF PROTECTION

Constructed with our lightest-weight performance fabric, this cap features an easy-going fit thanks to its adjustable micro hook-and-loop backstrap with D-ring. UPF 35 sun protection and Stay-Dri moisture management technology ensure all-day comfort on hot, sunny days, while a soft, unstructured crown offers a relaxed look and feel.



Stone  
Standard Embroidery

**STYLE:** 6 Panel

**PROFILE:** Relaxed

**BILL:** Precurved

**SWEATBAND:** Stay-Dri

**FABRIC:** Lite

**COMPOSITION:** 100% Polyester

**FIT:** Adjustable

**CLOSURE:** Micro Hook-and-Loop  
Backstrap with D-Ring

**SIZE:** OSFM



# 173

## HOOD RIVER WICKING

Hood River is known for outdoor adventure, and so is this namesake cap inspired by its natural grandeur. Whether you're windsurfing or thru-hiking, our Mid Pro 173 Hood River has you covered. Combining stretch performance polyester with our tried and true Sportmesh, this is the performance trucker your outdoor adventures have been waiting for.

**STYLE:** 6 Panel  
**PROFILE:** Mid Pro  
**BILL:** Precurved  
**SWEATBAND:** Stay-Dri  
**FABRIC:** Stretch Performance Polyester/  
 Sportmesh  
**COMPOSITION:**  
**FRONT:** 98% Polyester/2% Spandex  
**BACK:** 95% Polyester/5% Spandex

**FIT:** R-Flex Adjustable  
**CLOSURE:** Snapback  
**SIZE:** OSFM



Charcoal  
Rubber Patch



# 155

## LITE TRAIL CAP WICKING UPF PROTECTION

For folks who never stop moving, the 155 is made to go wherever your feet will take you. Constructed with our most lightweight fabric to help keep the wearer cool, it's rated UPF 35 and wicks away sweat—providing comfortable sun protection anywhere you go.

**STYLE:** 6 Panel  
**PROFILE:** Relaxed  
**BILL:** Precurved  
**SWEATBAND:** Stay-Dri  
**FABRIC:** Lite  
**COMPOSITION:** 100% Polyester

**FIT:** Adjustable  
**CLOSURE:** Hook-and-Loop Backstrap  
 with D-Ring  
**SIZE:** OSFM



Royal/Charcoal  
Etched Genuine Leather Applique



# 222

## AIRMESH LITE TRUCKER WICKING

For a cap that's just as much at home at the park, on the road, or out in the woods—our 222 trucker offers a modern, athletic look. With a six-panel construction, lightweight front panels, and an Airmesh back for ventilation, the 222 is perfect for on-the-go comfort.

**STYLE:** 6 Panel  
**PROFILE:** Low Pro  
**BILL:** Precurved  
**SWEATBAND:** Stay-Dri  
**FABRIC:** Lite/Airmesh  
**COMPOSITION:** 100% Polyester

**FIT:** Adjustable  
**CLOSURE:** Hook-and-Loop Backstrap  
**SIZE:** OSFM



**Slate/White**  
Screen Printed Label | OD111



Black

Black/White

Charcoal/White

Navy/White

Red/White

Royal/White

Slate/White

White

# 176

## IGNITE LT PERFORMANCE CAP

The 176 Ignite LT Performance Cap features retro bill trims and laser venting to maximize airflow. This cap offers the sideline style and performance players and coaches demand and fans love.

**STYLE:** 6 Panel  
**PROFILE:** Low Pro  
**BILL:** Precurved  
**SWEATBAND:** Standard  
**FABRIC:** Ignite LT  
**COMPOSITION:** 98% Polyester/2% Spandex

**FIT:** Adjustable  
**CLOSURE:** Snapback  
**SIZE:** OSFM



**Red/White**  
3D Embroidery



Black/White

Charcoal/White

Dark Green/White

Navy/White

Red/White

Royal/White

White/Charcoal

# 174 ●●

## PERFORMANCE TRUCKER WICKING

Our 174 is loaded with performance features, like enhanced durability with Ignite LT front panels, and Sportmesh back panels for improved fit and comfort. And with a Stay-Dri sweatband, this Low Pro performance trucker is built to take a beating without slowing down.

**STYLE:** 6 Panel

**PROFILE:** Low Pro

**BILL:** Precurved

**SWEATBAND:** Stay-Dri

**FABRIC:** Ignite LT/Sportmesh

**COMPOSITION:**

FRONT: 98% Polyester/2% Spandex

BACK: 95% Polyester/5% Spandex

**FIT:** Adjustable

**CLOSURE:** Snapback

**SIZE:** OSFM



Navy/White  
Rubber Patch



Black/White



Charcoal/Charcoal



Navy/White



258 Black/White  
Embroidered Patch



# MESH BACK

# THE 112

The 112 is *the* quintessential trucker. Constructed with the trademark attention to detail that we've built our reputation on and shaped by over 50 years of cap-making expertise, the 112 has inspired many imitations yet continues to be America's favorite cap.



## THE 112 FAMILY OF MODELS

# 112

## TRUCKER

The 112 is the standard by which all truckers are measured. Popular for its undeniable quality and versatility, this casual classic is constructed with the trademark attention to detail that we've built our reputation on. With a design shaped by more than 50 years of cap-making expertise and available in over 50 colorways, the 112 has inspired many imitations yet continues to be the most popular cap in the USA.



**Solid Quarry**  
Woven Patch | CUW0700

**STYLE:** 6 Panel  
**PROFILE:** Mid Pro  
**BILL:** Precurved  
**SWEATBAND:** Standard  
**FABRIC:** Cotton-Polyester Twill/Trucker Mesh  
**COMPOSITION:**  
FRONT: 60% Cotton, 40% Polyester  
BACK: 100% Polyester

**FIT:** Adjustable  
**CLOSURE:** Snapback  
**SIZE:**  
Y (6 3/8 - 6 5/8)  
SM (6 1/2 - 7)  
OSFM (7 - 7 3/4)  
XL (7 1/4 - 7 7/8)



[Y] = Available in youth size. [S] = Available in small size. [XL] = Available in extra large size.

# 112FPR **NEW**

## FIVE PANEL TRUCKER WITH ROPE

Our world-renowned 112 Trucker gets a design overhaul with this five-panel version that includes a nod to headwear history thanks to its classic bill rope. The 112FPR includes everything there is to love about America's favorite cap with on-trend details to enhance your style.



**Heather Grey/Black/Black**  
Embroidered Patch | GF823

**STYLE:** 5 Panel  
**PROFILE:** Mid Pro  
**BILL:** Precurved  
**SWEATBAND:** Standard  
**FABRIC:** Cotton-Polyester Twill/Trucker Mesh  
**COMPOSITION:**  
FRONT: 60% Cotton, 40% Polyester  
BACK: 100% Polyester

**FIT:** Adjustable  
**CLOSURE:** Snapback  
**SIZE:** OSFM



# 112FP

## FIVE PANEL TRUCKER

This riff on our classic 112 Trucker offers a seamless five-panel construction, delivering everything folks love about the 112 with opportunities for a wider variety of decorations and designs.



**Chocolate Chip/Birch**  
Etched Genuine Leather Applique

**STYLE:** 5 Panel  
**PROFILE:** Mid Pro  
**BILL:** Precurved  
**SWEATBAND:** Standard  
**FABRIC:** Cotton-Polyester Twill/Trucker Mesh  
**COMPOSITION:**  
FRONT: 60% Cotton, 40% Polyester  
BACK: 100% Polyester

**FIT:** Adjustable  
**CLOSURE:** Snapback  
**SIZE:** OSFM





# 112+

## R-FLEX ADJUSTABLE TRUCKER

For those who might have trouble finding their perfect fit with a typical snapback, the 112+ presents the iconic style of its namesake with the thoughtful additions of a Comfort Stretch sweatband and a stretch polyester mesh back, creating an enhanced fit and all-day comfort.



Heather Grey/Black  
Standard Embroidery | OD922

**STYLE:** 6 Panel  
**PROFILE:** Mid Pro  
**BILL:** Precurved  
**SWEATBAND:** Comfort Stretch  
**FABRIC:**  
Cotton-Polyester Twill/Stretch  
Polyester Mesh

**FIT:** R-Flex Adjustable  
**CLOSURE:** Snapback  
**SIZE:** OSFM  
**COMPOSITION:**  
FRONT: 60% Cotton/40% Polyester  
BACK: 95% Polyester/5% Spandex



# 112PM

## PRINTED MESH TRUCKER

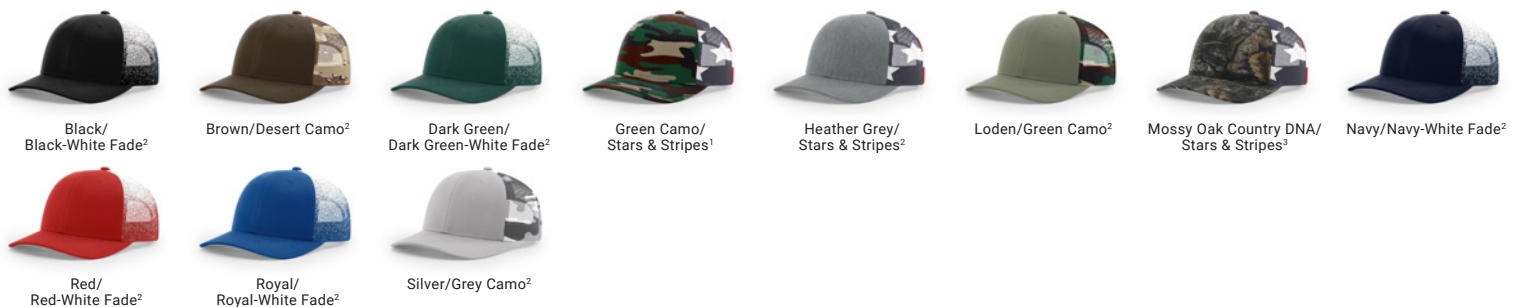
A stylish take on the always classic 112 Trucker, the 112PM is available in unique colorways incorporating camo and fade print mesh into its iconic design. Same airflow. Same adjustable snapback fastening. All new looks that make your 112PM truly yours.



Green Camo/Stars & Stripes  
3D Embroidery | LR428

**STYLE:** 6 Panel  
**PROFILE:** Mid Pro  
**BILL:** Precurved  
**SWEATBAND:** Standard  
**FABRIC:**  
Cotton-Spandex Twill/Trucker Mesh<sup>1</sup>, Cotton-Polyester Twill/Trucker Mesh<sup>2</sup>, or Polyester Twill/Trucker Mesh<sup>3</sup>

**FIT:** Adjustable  
**CLOSURE:** Snapback  
**SIZE:** OSFM  
**COMPOSITION:**  
See Below<sup>1,2,3</sup>



<sup>1</sup> GREEN CAMO COMPOSITION: FRONT: 97% Cotton/3% PU Spandex BACK: 100% Polyester | <sup>2</sup> SOLID COMPOSITION: FRONT: 60% Cotton/40% Polyester BACK: 100% Polyester | <sup>3</sup> MOSSY OAK COMPOSITION: 100% Polyester | **NOTE:** Camouflage patterns may feature brand logos

# 112P

## PRINTED TRUCKER

The iconic design of our famous 112 Trucker gets a redesign for the great outdoors with this printed reimagination of the Richardson classic. A mesh back provides the best in ventilation and comfort, while the 112P's adjustable snapback allows you to lock in your perfect fit.



**Mossy Oak Country DNA/Black**  
Woven Patch | CUW1700

**STYLE:** 6 Panel  
**PROFILE:** Mid Pro  
**BILL:** Precurved  
**SWEATBAND:** Standard  
**FABRIC:** Cotton-Spandex Twill/Trucker Mesh<sup>1</sup> or Polyester Twill/Trucker Mesh<sup>2</sup>  
**FIT:** Adjustable  
**CLOSURE:** Snapback  
**SIZE:** OSFM  
**COMPOSITION:** See Below<sup>1,2</sup>



[S] = Available in small size.

<sup>1</sup> DESERT AND GREEN CAMO COMPOSITION: FRONT: 97% Cotton/3% PU Spandex BACK: 100% Polyester | <sup>2</sup> KRYPTEK, MOSSY OAK, AND REALTREE; DIGITAL CAMO COMPOSITION: 100% Polyester | **NOTE:** Camouflage patterns may feature brand logos

# 112PFP NEW

## PRINTED FIVE PANEL TRUCKER

Our acclaimed 112 Trucker takes to the outdoors with this printed five-panel iteration. Available in a wide variety of camo prints, you'll be right at home huddled in the brush or kicking back on the patio in this outdoor take on a Richardson icon.



**Admiral Duck Camo/Black**  
Rubber Patch | GF824

**STYLE:** 5 Panel  
**PROFILE:** Mid Pro  
**BILL:** Precurved  
**SWEATBAND:** Standard  
**FABRIC:** Cotton-Spandex Twill<sup>1</sup> or Polyester Twill<sup>2</sup>/Trucker Mesh  
**FIT:** Adjustable  
**CLOSURE:** Snapback  
**SIZE:** OSFM  
**COMPOSITION:** See Below<sup>1,2</sup>



<sup>1</sup> DIGITAL AND GREEN CAMO COMPOSITION: FRONT: 97% Cotton/3% PU Spandex BACK: 100% Polyester | <sup>2</sup> DUCK, KRYPTEK, MOSSY OAK, AND REALTREE COMPOSITION: 100% Polyester | **NOTE:** Camouflage patterns may feature brand logos

# 115

## LOW PRO TRUCKER

The 115 is a lower-profile version of our world-famous 112 Trucker. Featuring the same classic six-panel construction as the 112, the low profile delivers a more tailored shape, while an adjustable snapback and two size options combine for the perfect fit.



**Heather Grey/Dark Charcoal**  
Woven Patch w/ Embroidery | GF827

**STYLE:** 6 Panel  
**PROFILE:** Low Pro  
**BILL:** Precurved  
**SWEATBAND:** Standard  
**FABRIC:** Cotton-Polyester Twill/Trucker Mesh  
**COMPOSITION:**  
FRONT: 60% Cotton/40% Polyester  
BACK: 100% Polyester

**FIT:** Adjustable  
**CLOSURE:** Snapback  
**SIZE:**  
SM (6 1/2- 7 1/4)  
MD-LG (6 7/8 - 7 5/8)



# 115CH

## LOW PRO HEATHER TRUCKER

Inspired by our best-selling 112 Trucker, the 115CH combines our casual structured Low Pro shape with the classic look of heathered cotton, resulting in a more form-fitting, tailored vibe.



**Black Heather/Black**  
Woven Patch

**STYLE:** 6 Panel  
**PROFILE:** Low Pro  
**BILL:** Precurved  
**SWEATBAND:** Standard  
**FABRIC:** Heather Jersey/Trucker Mesh  
**COMPOSITION:**  
FRONT: 47% Polyester/47% Rayon/  
6% PU Spandex  
BACK: 100% Polyester

**FIT:** Adjustable  
**CLOSURE:** Snapback  
**SIZE:**  
SM (6 1/2- 7 1/4)  
MD-LG (6 7/8 - 7 5/8)



# 111

## GARMENT WASHED TRUCKER

This remix of our 112 Trucker is treated with a classic heritage garment wash for an extra-casual variation of the original Richardson icon. The unstructured mesh back offers a more relaxed fit for additional comfort, while the casual look is right at home in the driver's seat, on the water, or pulled over the eyes for an expertly executed afternoon nap.



**Driftwood/Khaki**  
Standard Embroidery

**STYLE:** 6 Panel  
**PROFILE:** Relaxed  
**BILL:** Precurved

**SWEATBAND:** Standard  
**FABRIC:**

Cotton Twill/Soft Polyester Mesh

**FIT:** Adjustable  
**CLOSURE:** Snapback  
**SIZE:** OSFM

**COMPOSITION:**  
FRONT: 100% Cotton | BACK: 100% Polyester



# 111P

## GARMENT WASHED PRINTED TRUCKER

Like the non-printed 111, the 111P is a remix of our famous 112 Trucker. A classic garment wash delivers an extra-casual look and comes in a variety of camo prints. The unstructured mesh back provides enhanced airflow for comfort while working in the yard or hunkering down in the blind.

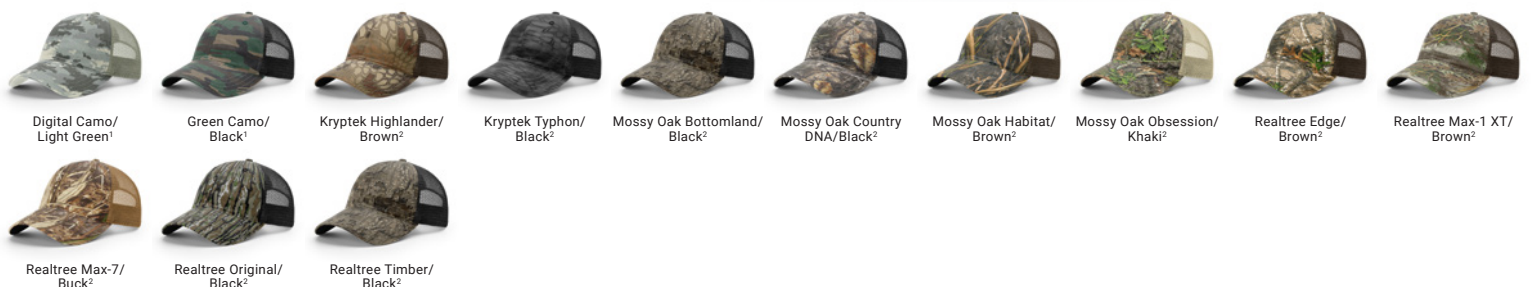


**Realtree Edge/Brown**  
Woven Patch | CUW1300

**STYLE:** 6 Panel  
**PROFILE:** Relaxed  
**BILL:** Precurved

**SWEATBAND:** Standard  
**FABRIC:** Cotton or Polyester Twill/  
Soft Trucker Mesh

**FIT:** Adjustable  
**CLOSURE:** Snapback  
**SIZE:** OSFM  
**COMPOSITION:** See Below<sup>1,2</sup>



<sup>1</sup> DIGITAL AND GREEN CAMO COMPOSITION: FRONT: 100% Cotton BACK: 100% Polyester | <sup>2</sup> KRYPTEK, MOSSY OAK, AND REALTREE COMPOSITION: 100% Polyester | NOTE: Camouflage patterns may feature brand logos

# 168

## 7 PANEL TRUCKER

The 168 is a contemporary-styled seven-panel trucker with a flat bill, popular with today's fashion-forward headwear fans. The Hi Pro shape and seamless front panel provide the ideal canvas for all types of decoration.



Heather Grey/Black  
Sublimated Patch

**STYLE:** 7 Panel  
**PROFILE:** Hi Pro  
**BILL:** Flat  
**SWEATBAND:** Standard  
**FABRIC:** Cotton-Polyester Twill/Trucker Mesh  
**COMPOSITION:**  
FRONT: 60% Cotton/40% Polyester  
BACK: 100% Polyester

**FIT:** Adjustable  
**CLOSURE:** Snapback  
**SIZE:** OSFM



# 511

## ACRYLIC-WOOL BLEND FLATBILL

The 511 offers a modern take on the classic trucker cap. Made of an acrylic-wool blend with a polyester mesh back, Hi Pro crown, six-panel construction, and a flat bill, it offers a wide range of colorways to choose from.



Loden/Black  
Woven Patch | GF837

**STYLE:** 6 Panel  
**PROFILE:** Hi Pro  
**BILL:** Flat  
**SWEATBAND:** Standard  
**FABRIC:** Acrylic Wool Blend/Trucker Mesh  
**COMPOSITION:**  
FRONT: 80% Acrylic/20% Wool  
BACK: 100% Polyester

**FIT:** Adjustable  
**CLOSURE:** Snapback  
**SIZE:** OSFM



<sup>1</sup> GREEN CAMO FABRIC: Cotton-Spandex/Trucker Mesh / **COMPOSITION:** FRONT: 97% Cotton/3% Spandex BACK: 100% Polyester | <sup>2</sup> TIGER CAMO FABRIC: Cotton Ripstop/Trucker Mesh / **COMPOSITION:** FRONT: 100% Cotton BACK: 100% Polyester

# 113

## FOAMIE TRUCKER

At the end of a ride—on a bike or a board—our 113 Foamie Trucker keeps stoke levels high and good vibes going. The seamless front foam panel offers a consistent, comfortable fit while the classic trucker mesh back with adjustable snapback gives this cap go-to versatility.

**STYLE:** 5 Panel

**PROFILE:** Hi Pro

**BILL:** Flat

**SWEATBAND:** Standard

**FABRIC:** Foam Twill/Trucker Mesh

**COMPOSITION:**

FRONT: 53% Polyester/47% Cotton

BACK: 100% Polyester

**FIT:** Adjustable

**CLOSURE:** Snapback

**SIZE:** OSFM



Navy  
Full Color Transfer | OD230



Black



Charcoal



Navy



White/Black



White/Charcoal



White/Navy



White/Navy/Red



White/Neon Blue/Black

# 213

## LOW PRO FOAMIE TRUCKER

The 213 is a lower-profile model of our classic Foamie Trucker for those who prefer a more tailored fit. The seamless foam front panel with large braided rope is perfect for wide variety of decorations, while a classic trucker mesh back with adjustable snapback makes this cap as comfortable as it is versatile.

**STYLE:** 5 Panel

**PROFILE:** Low Pro

**BILL:** Precurved

**SWEATBAND:** Standard

**FABRIC:** Foam Twill/Trucker Mesh

**COMPOSITION:**

FRONT: 53% Polyester/47% Cotton

BACK: 100% Polyester

**FIT:** Adjustable

**CLOSURE:** Snapback

**SIZE:** OSFM



Charcoal/Black/Black  
Sublimated Patch | OD068



Black/Charcoal/Black



Charcoal/Black/Black



Red/White/Royal



White/Black/Black



White/Navy/Navy

# 163

## LASER CUT FIVE PANEL TRUCKER

For this contemporary take on our classic trucker cap, we laser-cut the front panels and dropped a contrasting underlay behind them, adding texture and an extra pop of color. The underbill also matches the front panel underlay, completing a super clean and cohesive look.

**STYLE:** 5 Panel  
**PROFILE:** Mid Pro  
**BILL:** Precurved  
**SWEATBAND:** Standard  
**FABRIC:** Cotton-Polyester Twill/Trucker Mesh  
**COMPOSITION:**  
 FRONT: 60% Cotton/40% Polyester  
 BACK: 100% Polyester

**FIT:** Adjustable  
**CLOSURE:** Snapback  
**SIZE:** OSFM



Kelly/White/Yellow  
3D Embroidery



# 110

## R-FLEX TRUCKER

This casual mesh back trucker sports a Mid Pro crown with R-Flex stretch sizing for a performance-forward fit, while a Comfort Stretch sweatband delivers all-day comfort.

**STYLE:** 6 Panel  
**PROFILE:** Mid Pro  
**BILL:** Precurved  
**SWEATBAND:** Comfort Stretch  
**FABRIC:** Cotton-Polyester Twill/Stretch Trucker Mesh  
**COMPOSITION:**  
 FRONT: 60% Cotton/40% Polyester  
 BACK: 95% Polyester/5% Spandex

**FIT:** R-Flex  
**SIZE:**  
 SM-MD (7 - 7 1/4)  
 LG-XL (7 3/8 - 7 5/8)



White  
3D Chain Stitch Embroidery, Back Embroidery





# CASUAL



Richardson Casual is where everyday comfort meets contemporary style. From the laid-back appeal of a classic dad cap to the modern aesthetic of a 7-panel, these caps prioritize all-day comfort, wearability, and versatility.

**255 Army Olive**

Etched Genuine Leather Applique

## 255

### PINCH FRONT STRUCTURED SNAPBACK

Contemporary. Comfortable. Classic. The 255 is a modern, on-trend cap for everyday wear, no matter the occasion. Crafted from a lightweight blend of cotton and polyester twill, it's as durable as it is stylish. A five-panel pinch front, flat bill, and adjustable snapback combine to provide tailored, modern style.



**Biscuit**

Woven Patch | CUW1500

**STYLE:** 5 Panel

**PROFILE:** Mid Pro

**BILL:** Flat

**SWEATBAND:** Standard

**FABRIC:** Cotton-Polyester Twill

**GREEN CAMO:** Cotton Spandex Twill

**COMPOSITION:**

60% Cotton/40% Polyester

**GREEN CAMO:** 97% Cotton/3% Spandex

**FIT:** Adjustable

**CLOSURE:** Snapback

**SIZE:**

OSFM

Y (6 3/8 - 6 5/8)



Army Olive



Berry



Biscuit



Black [Y]



Flint Grey



Green Camo



Heather Grey [Y]



Navy

[Y] = Available in youth size.



# 326 **NEW**

## PEACHED COTTON TWILL

The ultimate in casual, broken-in weekend wear, our 326 sets the standard for what an everyday cap should be. Featuring a classic six-panel construction of peach-brushed cotton twill and an adjustable cloth hideaway backstrap, this cap is perfect for an afternoon of relaxation and fun.

**STYLE:** 6 Panel  
**PROFILE:** Relaxed  
**BILL:** Precurved  
**SWEATBAND:** Standard  
**FABRIC:** Peached Cotton Twill  
**COMPOSITION:** 100% Cotton

**FIT:** Adjustable  
**CLOSURE:** Cloth Hideaway Backstrap  
**SIZE:** OSFM



**Powder Blue**  
Etched Genuine Leather Applique | GF835



# 380

## GARMENT DYED AND WASHED TWILL

For a relaxed look in every situation, look no further than our 380. Made from a dyed and washed twill and featuring an adjustable hideaway backstrap for easy sizing with a casual finish, this may very well be the softest cap in our line.

**STYLE:** 6 Panel  
**PROFILE:** Relaxed  
**BILL:** Precurved  
**SWEATBAND:** Standard  
**FABRIC:** Heavyweight Brushed Cotton Twill  
**COMPOSITION:** 100% Cotton

**FIT:** Adjustable  
**CLOSURE:** Cloth Hideaway Backstrap  
**SIZE:** OSFM



**Black**  
Sublimated Label | OD339



# 324

## PIGMENT DYED AND WASHED

This relaxed and unstructured cap is ready for anything with its sturdy chino twill construction. Featuring an adjustable cloth hideaway backstrap, the 324 presents a casual, all-natural look with its pigment dye and comfortable fit.

**STYLE:** 6 Panel  
**PROFILE:** Relaxed  
**BILL:** Precurved  
**SWEATBAND:** Standard  
**FABRIC:** Cotton Twill  
**COMPOSITION:** 100% Cotton

**FIT:** Adjustable  
**CLOSURE:** Cloth Hideaway Backstrap  
**SIZE:** OSFM



**Charcoal**  
Sublimated Patch



Charcoal



Columbia Blue



Dark Maroon



Light Olive



Mustard



Navy



Red

# 382

## SNOW WASHED

Snow-washed for a worn-in appearance, this unstructured canvas cap prioritizes comfort and fit with an adjustable cloth backstrap. The snow-washing process yields a pattern of organic wear that gives the appearance of having been there, done that, and come back to tell the tale.

**STYLE:** 6 Panel  
**PROFILE:** Relaxed  
**BILL:** Precurved  
**SWEATBAND:** Standard  
**FABRIC:** Snow Washed Cotton Twill  
**COMPOSITION:** 100% Cotton

**FIT:** Adjustable  
**CLOSURE:** Cloth Hideaway Backstrap  
**SIZE:** OSFM



**Black Denim**  
Etched Genuine Leather Applique | OD026



Black Denim



Blue Denim



Brown



Khaki



Light Olive



Sky Blue

# 252

## PREMIUM COTTON DAD CAP

You don't have to be a dad to appreciate a high-quality dad cap. Our 252 is made from premium cotton with a brass clasp and adjustable hideaway backstrap—giving it a premium dad look with classic dad comfort.

**STYLE:** 6 Panel  
**PROFILE:** Relaxed  
**BILL:** Precurved  
**SWEATBAND:** Standard  
**FABRIC:** Premium Cotton Twill  
**COMPOSITION:** 100% Cotton

**FIT:** Adjustable  
**CLOSURE:** Cloth Hideaway Backstrap  
**SIZE:**  
OSFM  
Y (6 3/8 - 6 5/8)



**Driftwood**  
Standard Embroidery



Aruba Blue



Banana



Black [Y]



Charcoal



Driftwood



Heather Grey



Loden



Navy [Y]



Pale Maroon



Patina Green



Peach



White [Y]

[Y] = Available in youth size.

# 252L

## PREMIUM LINEN DAD CAP

Premium linen. That's what sets our 252L apart. It's a light and breezy twist on the classic dad cap, made with cotton linen for a lightweight, breathable experience. A relaxed, unstructured profile delivers an easy-going fit and casual style for weekend dad vibes every day.

**STYLE:** 6 Panel  
**PROFILE:** Relaxed  
**BILL:** Precurved  
**SWEATBAND:** Standard  
**FABRIC:** Cotton Linen Blend  
**COMPOSITION:** 55% Cotton/45% Linen

**FIT:** Adjustable  
**CLOSURE:** Cloth Hideaway Backstrap  
**SIZE:** OSFM



**Khaki**  
3D Embroidery



Chocolate Chip



Dark Charcoal



Insignia Blue



Khaki

# 320

## WASHED TWILL

A more durable cap holds up to more rigorous wear. Crafted with a soft yet sturdy twill body, the 320 offers comfort and versatility. An adjustable cloth backstrap with a comfort buckle makes finding the right fit easy.



**STYLE:** 6 Panel  
**PROFILE:** Relaxed  
**BILL:** Precurved  
**SWEATBAND:** Standard  
**FABRIC:** Enzyme Washed Heavyweight Cotton Twill  
**COMPOSITION:** 100% Cotton

**FIT:** Adjustable  
**CLOSURE:** Cloth Hideaway Backstrap  
**SIZE:**  
SM (6 1/2 - 7 1/8)  
MD-LG (7 - 7 3/4)

**Navy**  
Etched Genuine Leather Applique,  
Back Embroidery



# 320T

## TODDLER CHINO

For kiddos who are wise beyond their years—the ones who truly value comfort, simplicity, and style—we proudly offer the 320T Toddler Chino. It's an essential cap for stylish toddlers on the playground or around the house.

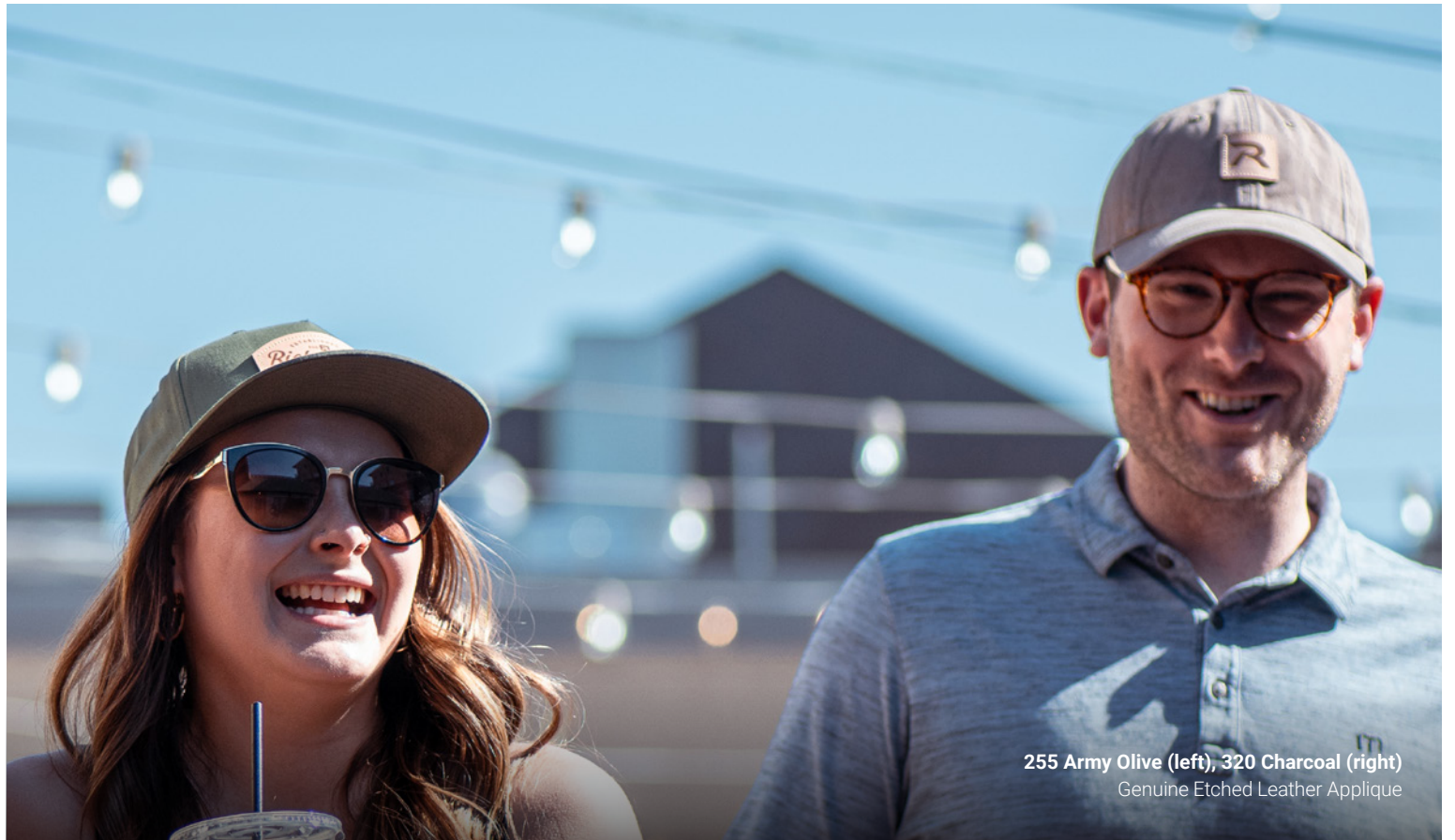


**STYLE:** 6 Panel  
**PROFILE:** Relaxed  
**BILL:** Precurved  
**SWEATBAND:** Standard  
**FABRIC:** Cotton Twill  
**COMPOSITION:** 100% Cotton

**FIT:** Elastic Backstrap  
**SIZE:** Fits Most Ages 1-3

**White**  
Standard Embroidery





255 Army Olive (left), 320 Charcoal (right)  
Genuine Etched Leather Applique

# 312

## SOLID TWILL TRUCKER

The shape and fit of our 312 Solid Twill Trucker is inspired by the best-selling 112 Trucker to create a versatile option that's ready to go wherever the road takes you. In this variation, our classic trucker shape is constructed with a cloth back for versatility and added insulation.



**Loden**  
Woven Patch | OD490

**STYLE:** 6 Panel  
**PROFILE:** Mid Pro  
**BILL:** Precurved  
**SWEATBAND:** Standard  
**FABRIC:** Cotton-Polyester Twill  
**COMPOSITION:** 60% Cotton/40% Polyester

**FIT:** Adjustable  
**CLOSURE:** Snapback  
**SIZE:** OSFM



# 510

## WOOL BLEND FLATBILL SNAPBACK

An acrylic-wool blend gives our 510 a durable, timeless feel. Its Hi Pro crown with a flat bill delivers an on-field look away from the game—and the wide array of solid, combination, and patterned colorways offer an option for every style.

**STYLE:** 6 Panel  
**PROFILE:** Hi Pro  
**BILL:** Flat  
**SWEATBAND:** Standard  
**FABRIC:** Acrylic Wool Blend  
**COMPOSITION:** 80% Acrylic/20% Wool

**FIT:** Adjustable  
**CLOSURE:** Snapback  
**SIZE:** OSFM



Heather Charcoal/Black  
Standard Embroidery



# 257

## 7 PANEL TWILL STRAPBACK

Our 257 features a unique seven-panel design with a seamless front panel that's perfect for a wide variety of decorations. Brass eyelets and an adjustable leather backstrap with brass clasp give our 257 a polished, premium look.

**STYLE:** 7 Panel  
**PROFILE:** Hi Pro  
**BILL:** Flat  
**SWEATBAND:** Standard  
**FABRIC:** Cotton-Polyester Twill  
**COMPOSITION:** 60% Cotton/40% Polyester

**FIT:** Adjustable  
**CLOSURE:** Leather Backstrap  
**SIZE:** OSFM



Dark Loden  
Debossed Faux Leather Applique



# 309

## CANVAS DUCK CLOTH

Across hard terrain and harsh weather, our 309 was made to withstand the toughest of conditions. Cut from super durable duck cloth canvas, it's always ready for the next challenge. Earth-tone colorways deliver a rugged look, and an adjustable hook-and-loop backstrap makes for a secure and comfortable fit.

**STYLE:** 6 Panel  
**PROFILE:** Low Pro  
**BILL:** Precurved  
**SWEATBAND:** Standard  
**FABRIC:** Cotton Canvas  
**COMPOSITION:** 100% Cotton

**FIT:** Adjustable  
**CLOSURE:** Hook-and-Loop Backstrap  
**SIZE:** OSFM



**Buck**  
Woven Patch | CUW0900



Buck



Dark Olive

# 203

## BRUSHED CHINO

A staple of our line, this brushed cotton cap with its low profile shape is famously comfortable and brings an easy-going style to any look. Essential color options and a secure hook-and-loop backstrap make it perfect for easy all-day wear.

**STYLE:** 6 Panel  
**PROFILE:** Low Pro  
**BILL:** Precurved  
**SWEATBAND:** Standard  
**FABRIC:** Heavyweight Brushed Cotton Twill  
**COMPOSITION:** 100% Cotton

**FIT:** Adjustable  
**CLOSURE:** Hook-and-Loop Backstrap  
**SIZE:** OSFM



**White**  
Standard Embroidery



Black



Charcoal



Driftwood



Navy



White



# R-SERIES

The R-Series is where Richardson quality meets affordability. Designed for those who seek high-quality headwear without a premium price tag, each model combines durable materials with meticulous craftsmanship, ensuring you don't have to compromise for value.



R75S Dark Green  
Embroidered Patch

## R55

### GARMENT WASHED TWILL

The R55 is a classic cap at a price that would make any father proud. Garment-washed cotton twill delivers a worn-in look that's available in an array of colorways, while a relaxed, unstructured construction offers all-day comfort.



Stone  
Standard Embroidery

**STYLE:** 6 Panel  
**PROFILE:** Relaxed  
**BILL:** Precurved  
**SWEATBAND:** Standard  
**FABRIC:** Washed Twill  
**COMPOSITION:** 100% Cotton

**FIT:** Adjustable  
**CLOSURE:** Cloth Hideaway Backstrap  
**SIZE:** OSFM





# R75S **NEW**

## CASUAL TWILL

Our R75S Casual Twill comes in a variety of colorways with an adjustable snapback ensuring a secure fit for all-day comfort, while its casual structured profile gives the cap an easygoing style.

**STYLE:** 6 Panel  
**PROFILE:** Low Pro  
**BILL:** Precurved  
**SWEATBAND:** Standard  
**FABRIC:** Cotton Twill  
**COMPOSITION:** 100% Cotton

**FIT:** Adjustable  
**CLOSURE:** Snapback  
**SIZE:** OSFM



**Black**  
Embroidered Patch



Black

Charcoal

Dark Green

Driftwood

Maroon

Navy

Red

Royal

Stone

White

# R65S **NEW**

## RELAXED TWILL

A full spectrum of colorways, 100% cotton twill, and an adjustable snapback make the R65S an ideal option for those seeking Richardson quality at an entry-level price.

**STYLE:** 6 Panel  
**PROFILE:** Relaxed  
**BILL:** Precurved  
**SWEATBAND:** Standard  
**FABRIC:** Cotton Twill  
**COMPOSITION:** 100% Cotton

**FIT:** Adjustable  
**CLOSURE:** Snapback  
**SIZE:** OSFM



**Charcoal**  
Woven Patch | CUW0300



Black

Charcoal

Driftwood

Maroon

Navy

Red

Royal

Stone

White

# R45

## GARMENT WASHED VISOR

Available in a full spectrum of colorways, the value-first R45 visor features a 2 1/4" front panel, stylish garment washed cotton twill, and a hook-and-loop backstrap for a secure fit.



Columbia Blue  
Standard Embroidery

**STYLE:** Visor  
**BILL:** Precurved  
**SWEATBAND:** Standard  
**FABRIC:** Cotton Twill

**FIT:** Adjustable  
**CLOSURE:** Hook-and-Loop Backstrap  
**SIZE:** OSFM  
**COMPOSITION:** 100% Cotton



# R22

## MICROFLEECE HEADBAND

The R22's soft microfleece creates a warm, comfortable fit around the ears, while the open crown prevents overheating during active periods of wear. Stretchable construction means one size fits most.



Royal  
Standard Embroidery

**STYLE:** Beanie  
**FABRIC:** Lightweight Polyester MicroFleece  
**COMPOSITION:** 100% Polyester

**SIZE:** OSFM



# R20

## MICROFLEECE BEANIE

Our R20's super soft microfleece provides plenty of insulation and stretches for a perfect fit, while its four-seam construction offers a classic beanie look.



Black  
Standard Embroidery

**STYLE:** Beanie  
**FABRIC:** Lightweight Polyester MicroFleece  
**COMPOSITION:** 100% Polyester

**SIZE:** OSFM



# R15

## SOLID KNIT

With its wide variety of colorways, and 360° of decoration space, the R15 is an ideal canvas for those who are branding on a budget.

**STYLE:** Beanie

**SIZE:** OSFM

**FABRIC:** Acrylic

**COMPOSITION:** 100% Acrylic



**Black**  
Etched Faux Leather Clip  
Label | OD441



Black



Blaze Orange



Camel



Grey



Heather Grey



Loden



Navy



Red



Royal

# R18

## SOLID BEANIE WITH CUFF

The R18 is cuffed, adding warmth where it's needed and offering 360° of space for your most creative designs. Available in a full spectrum of colorways, the R18 is a classic beanie made for all-day wear.

**STYLE:** Beanie

**SIZE:** OSFM

**FABRIC:** Acrylic

**COMPOSITION:** 100% Acrylic



**Neon Yellow**  
Woven Clip Label | OD441



Black



Blaze Orange



Burnt Orange



Camel



Cardinal



Dark Green



Grey



Heather Grey



Loden



Maroon



Navy



Neon Blue



Neon Green



Neon Pink



Neon Yellow



Red



Royal



White



# OUTDOOR



As an Oregon brand made up of outdoor enthusiasts, we've created the Richardson Outdoor collection as a tribute to our home state and its wild, natural spaces. Featuring performance materials and enhancements, each cap in this line is designed to be your steady companion throughout all of your adventures.

169 Moss Green  
Woven Patch

## 169 NEW

### CANNON WICKING

Inspired by the sprawling sands of Cannon Beach, with its majestic views of Haystack Rock—this performance-forward take on our 7 Panel Trucker is a Hi Pro cap presenting a modern trucker look and feel, with built-in water resistance that helps keep its shape even after getting wet.



Light Navy  
Woven Patch | CUW0300

**STYLE:** 7 Panel

**PROFILE:** Hi Pro

**BILL:** Flat

**SWEATBAND:** Stay-Dri

**FABRIC:** Stretch Performance Polyester

**COMPOSITION:** 98% Polyester/2% Spandex

**FIT:** Adjustable

**CLOSURE:** Snapback

**SIZE:** OSFM



Basil Green



Black



Claret Red



Desert Orange



Grey



Light Navy



Maroon



Moss Green



Pool Blue



White

# 835 NEW

## TILIKUM WICKING

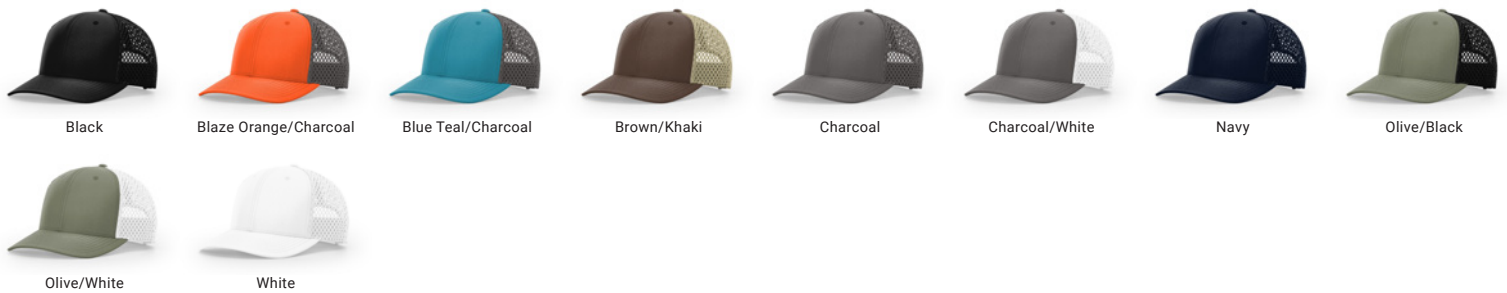
Like the windswept rush you get crossing the Willamette River 180 feet above the river, the ripstop polyester fabric with open mesh gives the 835 Tilikum the best airflow a cap can offer. A six-panel construction presents a classic silhouette, while the materialization is as innovative as the pedestrian-only bridge it's named after.

**STYLE:** 6 Panel  
**PROFILE:** Mid Pro  
**BILL:** Precurved  
**SWEATBAND:** Stay-Dri  
**FABRIC:** Ripstop Polyester/  
 Open Polyester Mesh  
**COMPOSITION:** 100% Polyester

**FIT:** Adjustable  
**CLOSURE:** Snapback  
**SIZE:** OSFM



Blue Teal/Charcoal  
 Woven Patch | OD482



# 935

## ROGUE PACKABLE/FLOATABLE WICKING

Inspired by the white waters of the Rogue River—one of eight rivers originally protected by the Wild and Scenic Rivers Act of 1968—our 935 features fast-drying fabrics and breathable, wide-set nylon mesh. A secure nylon backstrap and floating foldable bill make this a difficult cap to lose...even when the going gets tough.

**STYLE:** 6 Panel  
**PROFILE:** Relaxed  
**BILL:** Flat  
**SWEATBAND:** Stay-Dri  
**FABRIC:** Ripstop Polyester/  
 Open Polyester Mesh  
**COMPOSITION:** 100% Polyester

**FIT:** Adjustable  
**CLOSURE:** Nylon Woven Backstrap  
**SIZE:** OSFM



Olive  
 Woven Patch | CUW0600



# 256

## UMPQUA UPF PROTECTION

With its mesh flip-up stay, flat bill, lightweight construction, classic Hi Pro crown, and UPF 50+ rating, our 256 offers all the benefits of modern cap design with classic golf vibes for a day on the links and beyond.

**STYLE:** 5 Panel  
**PROFILE:** Hi Pro  
**BILL:** Flat  
**SWEATBAND:** Standard  
**FABRIC:** Performance Cotton Nylon  
**COMPOSITION:** 85% Cotton/15% Nylon

**FIT:** Adjustable  
**CLOSURE:** Snapback  
**SIZE:** OSFM



**Red/White**  
 Woven Patch | CUW0100



# 939

## BACHELOR

At over 9,000 feet in elevation, Mount Bachelor towers over the landscape of central Oregon—providing an all-seasons playground for outdoor adventurers. With its soft-washed cotton fabric, pinched front, and classic rope detailing, Mt. Bachelor is just the kind of outdoor lifestyle our 939 was made for.

**STYLE:** 5 Panel  
**PROFILE:** Relaxed  
**BILL:** Precurved  
**SWEATBAND:** Standard  
**FABRIC:** Peached Bio Washed Cotton/  
 Soft Trucker Mesh  
**COMPOSITION:**  
 FRONT: 100% Cotton  
 BACK: 100% Polyester

**FIT:** Adjustable  
**CLOSURE:** Snapback  
**SIZE:** OSFM



**Toast/Sand/Cream**  
 Standard Embroidery | OD430



# 253

## TIMBERLINE UPF PROTECTION

Located nearly 6,000 feet above sea level on the south face of Mt. Hood, Timberline Lodge stands as one of Oregon's most famous historical landmarks. Our 253 honors the history of the lodge, featuring a warm and stylish corduroy exterior and cotton twill lining to keep your head warm when mountain winds blow. A bill rope adds personality, while UPF 50+ protects you from the sun's harsh rays.



**STYLE:** 6 Panel  
**PROFILE:** Hi Pro  
**BILL:** Flat  
**SWEATBAND:** Standard  
**FABRIC:** Cotton Corduroy  
**COMPOSITION:** 100% Cotton

**FIT:** Adjustable  
**CLOSURE:** Snapback  
**SIZE:** OSFM

Olive  
Etched Genuine Leather Applique | OD451



Black

Navy

Olive

Tan

# 930

## TROUTDALE

Just as its namesake serves as the gateway to the wild wilderness of the Columbia River Gorge, our 930 Troutdale is a gateway to adventure. Featuring a classic trucker build with a soft-structure crown and mesh back, its corduroy front and braided bill rope ensure it looks the part in town or off the beaten path.



**STYLE:** 5 Panel  
**PROFILE:** Relaxed  
**BILL:** Precurved  
**SWEATBAND:** Standard  
**FABRIC:** Heavyweight Corduroy  
Cotton/Soft Trucker Mesh  
**COMPOSITION:**  
FRONT: 100% Cotton  
BACK: 100% Polyester

**FIT:** Adjustable  
**CLOSURE:** Snapback  
**SIZE:** OSFM

Light Grey/Black  
Embroidered Patch | OD430



Amber Gold/Navy

Black/Charcoal

Brown/Sand

Light Blue/Sand

Light Grey/Black

Navy

# 934

WILDWOOD  PACKABLE/FLOATABLE  WICKING  UPF PROTECTION

Winding through the wilderness of Portland, Oregon's 5,200 acre Forest Park, the Wildwood Trail leads hikers out of the city and into one of the largest urban forests in the country. Our 934 Wildwood embodies that connection between city streets and wooded trails. It's water-resistant, rated UPF 50+, packable, and features a hook-and-loop backstrap with stretch D-Ring to keep you comfortable in all conditions.



**Glacier Grey**  
Screen Printed Patch | OD266

**STYLE:** 6 Panel  
**PROFILE:** Relaxed  
**BILL:** Flat  
**SWEATBAND:** Stay-Dri  
**FABRIC:** Outdoor Nylon  
**COMPOSITION:** 100% Nylon

**FIT:** Adjustable  
**CLOSURE:** Micro Hook-and-Loop  
Backstrap with Stretch D-Ring  
**SIZE:** OSFM



Black

Charcoal

Glacier Grey

Olive

# 942

SAHALIE  WATER REPELLENT  UPF PROTECTION  WICKING

Named for the wild and beautiful Sahalie Falls of the McKenzie River, this nylon performance cap is water-repellent and offers UPF 50+ protection for long days spent on the water or the trails. Our casual structured Low Pro shape, precurved bill, and hook-and-loop backstrap with stretch D-Ring make this an ideal cap for any outdoor adventure.



**Charcoal**  
Woven Patch | OD442

**STYLE:** 6 Panel  
**PROFILE:** Low Pro  
**BILL:** Precurved  
**SWEATBAND:** Stay-Dri  
**FABRIC:** Performance Nylon  
**COMPOSITION:** 100% Nylon

**FIT:** Adjustable  
**CLOSURE:** Micro Hook-and-Loop  
Backstrap with Stretch D-Ring  
**SIZE:** OSFM



Charcoal

Moss

White



# 173

## HOOD RIVER WICKING

Hood River is known for outdoor adventure, and so is this namesake cap inspired by its natural grandeur. Whether you're windsurfing or thru-hiking, our Mid Pro 173 Hood River has you covered. Combining stretch performance polyester with our tried and true Sportmesh, this is the performance trucker your outdoor adventures have been waiting for.

**STYLE:** 6 Panel  
**PROFILE:** Mid Pro  
**BILL:** Precurved  
**SWEATBAND:** Stay-Dri  
**FABRIC:** Stretch Performance Polyester/  
 Sportmesh  
**COMPOSITION:**  
 FRONT: 98% Polyester/2% Spandex  
 BACK: 95% Polyester/5% Spandex

**FIT:** R-Flex Adjustable  
**CLOSURE:** Snapback  
**SIZE:** OSFM



Desert Orange/Light Khaki/Insignia Blue  
 Rubber Patch | OD347



# 933

## BANDON WATER REPELLENT WICKING UPF PROTECTION

Wind, water, sun, and fun. You'll find them all along the shores of Bandon, Oregon—and our 933 is designed to help you enjoy them. With its Stay-Dri sweatband, lightweight water-repellent fabrics, and UPF 50+ rating, the Bandon offers the outdoor utility your adventure requires.

**STYLE:** 6 Panel  
**PROFILE:** Low Pro  
**BILL:** Precurved  
**SWEATBAND:** Stay-Dri  
**FABRIC:** Nylon-Cotton Blend/  
 Ripstop Stretch Polyester Mesh  
**COMPOSITION:**  
 FRONT: 60% Nylon/40% Cotton  
 BACK: 100% Polyester

**FIT:** R-Flex  
**SIZE:**  
 SM-MD (7 - 7 1/4)  
 LG-XL (7 3/8 - 7 5/8)



Black/Grey  
 3D Chain Stitch Embroidery



# 931

## KOOSAH

From its ripstop fabric construction to its metal grommet eyelets, the 931 is the kind of water-repellent cap you need when hiking the picture-esque McKenzie River Trail and stopping to see the majestic Koosah Falls. A nylon woven backstrap is durable and secure, while the clean, technical, nature-ready design will ensure you look good no matter the view.

**STYLE:** 6 Panel  
**PROFILE:** Mid Pro  
**BILL:** Precurved  
**SWEATBAND:** Standard  
**FABRIC:** Ripstop Cotton  
**COMPOSITION:** 100% Cotton

**FIT:** Adjustable  
**CLOSURE:** Nylon Woven Backstrap  
**SIZE:** OSFM



**Mallard Blue**  
Etched Genuine Leather Applique | CUW0200



Berry



Black



Charcoal



Driftwood



Mallard Blue



Olive

# 938

## ORE UPF PROTECTION WICKING

Snow-capped mountains. Dry desert dunes. Wild wilderness and urban adventure. Oregon has it all, and this relaxed unstructured cap is made to take it all in. Soft-washed cotton twill construction gives the cap a worn-in look and feel, while its durable woven nylon backstrap provides a secure fit and UPF 50+ offers protection from harsh UV rays.

**STYLE:** 6 Panel  
**PROFILE:** Relaxed  
**BILL:** Precurved  
**SWEATBAND:** Stay-Dri  
**FABRIC:** Peached Bio Washed Cotton  
**COMPOSITION:** 100% Cotton

**FIT:** Adjustable  
**CLOSURE:** Nylon Woven Backstrap  
**SIZE:** OSFM



**Toast**  
Woven Label | OD101



Charcoal



Grey



Legion Blue



Loden



Tan



Toast

# 211

## TUMALO

Our 211 Tumalo is the ultimate casual trucker. Garment washed with an unstructured mesh back, the Tumalo offers a relaxed fit day-in and day-out. Its coated twill front panels, bill, and cloth backstrap give it a laid back vibe perfect for everyday wear.

**STYLE:** 6 Panel  
**PROFILE:** Relaxed  
**BILL:** Precurved  
**SWEATBAND:** Standard  
**FABRIC:** Washed Coated Twill/  
Soft Trucker Mesh  
**COMPOSITION:**  
FRONT: 63% Cotton/33% Polyester/4% PU  
BACK: 100% Polyester

**FIT:** Adjustable  
**CLOSURE:** Cloth Hideaway Backstrap  
**SIZE:** OSFM



**Navy/Khaki**  
Embroidered Patch



Brown/Khaki



Navy/Khaki

# 937

## PIONEER WATER REPELLENT UPF PROTECTION

There's something about the idea of being first. Staking a claim. Boldly going. It's that spirit that inspires our 937 Pioneer—a cap that's at home on the farm, on a fishing trip, or a night on the town. Its extra-large front panel, UPF 50+ protection, and Original Martexin® Wax water-repellent finish give it a rugged look that's fit for trailblazing.

**STYLE:** 7 Panel  
**PROFILE:** Hi Pro  
**BILL:** Precurved  
**SWEATBAND:** Standard  
**FABRIC:** Martexin Wax Finish Cotton Canvas  
**COMPOSITION:** 100% Cotton

**FIT:** Adjustable  
**CLOSURE:** Snapback  
**SIZE:** OSFM



**Dark Olive**  
Woven Patch | OD489



Buck



Dark Olive

# 435

## COOS BAY WATER REPELLENT UPF PROTECTION

Coos Bay sits inland past the rocky seaside cliffs of the Southern Oregon Coast. Comfortable and rugged, our 435 is inspired by the landscape and environment of its namesake. With weather-inspired functionality and an Original Martexin® Wax water-repellent finish, it's made to withstand the elements.

**STYLE:** 6 Panel  
**PROFILE:** Relaxed  
**BILL:** Precurved  
**SWEATBAND:** Standard  
**FABRIC:** Martexin Wax Finish Cotton Canvas  
**COMPOSITION:** 100% Cotton

**FIT:** Adjustable  
**CLOSURE:** Hook-and-Loop Backstrap  
**SIZE:** OSFM



**Buck**  
Woven Patch | CUW1400



Buck



Dark Olive

# 436

## SANTIAM

Running through the volcanic arc of the Cascade range, the Santiam River's glacial waters ebb and flow through the Central Oregon wilderness. Rough and rugged to its core, our 436 Santiam features a waxed cotton construction designed to withstand the elements. The relaxed, unstructured crown and adjustable cloth hideaway backstrap provide a perfect fit for all-day comfort.

**STYLE:** 5 Panel  
**PROFILE:** Relaxed  
**BILL:** Precurved  
**SWEATBAND:** Standard  
**FABRIC:** Waxed Cotton  
**COMPOSITION:** 100% Cotton

**FIT:** Adjustable  
**CLOSURE:** Cloth Hideaway Backstrap  
**SIZE:** OSFM



**Olive**  
Etched Faux Leather Applique | OD361



Brown



Dark Tan



Light Navy



Olive

# 932

PCT  WATER REPELLENT  PACKABLE/FLOATABLE  WICKING  UPF PROTECTION

The Pacific Crest Trail runs up the backbone of the Pacific states from Mexico to Canada. 2,653 miles over varied terrain through pure wilderness. Our 932 PCT was designed to live up to the relentless pursuit of the toughest challenges. It's lightweight, breathable, and packable, featuring a hook-and-loop backstrap with stretch D-Ring and UPF 50+ protection.



**Black**  
Woven Label | OD098

**STYLE:** 5 Panel  
**PROFILE:** Relaxed  
**BILL:** Flat  
**SWEATBAND:** Stay-Dri  
**FABRIC:** Matte Nylon/Ripstop Stretch Polyester Mesh  
**COMPOSITION:**  
TOP: 100% Nylon  
SIDE: 100% Polyester

**FIT:** Adjustable  
**CLOSURE:** Micro Hook-and-Loop Backstrap with Stretch D-Ring  
**SIZE:** OSFM



Black

Blue Tint/Grey

Grey/Glacier Grey

Light Jade/Charcoal

Maroon/Glacier Grey

Navy

Orange/Charcoal

Smoke Blue/Charcoal

# 217

MACLEAY  UPF PROTECTION

The Macleay Trail leads hikers from the pavement of NW Portland to an old-growth PNW forest in less than a quarter of a mile. In honor of its namesake, our 217 Macleay is designed to traverse that cross-current of nature and urbanity. A lightweight twill, UPF 50+ protection, and modern five-panel construction make this camper cap an outdoor favorite.



**Dark Loden/Biscuit**  
Etched Genuine Leather Applique with Side Embroidery

**STYLE:** 5 Panel  
**PROFILE:** Relaxed  
**BILL:** Flat  
**SWEATBAND:** Standard  
**FABRIC:** Cotton-Polyester Twill  
CAMO: Cotton-Spandex Twill  
**COMPOSITION:**  
60% Cotton/40% Polyester  
CAMO: 97% Cotton/3% Spandex

**FIT:** Adjustable  
**CLOSURE:** Nylon Woven Backstrap  
**SIZE:** OSFM  
Y (6 3/8 - 6 5/8)



Army Olive

Berry

Black [M]

Dark Loden/Biscuit

Green Camo [M]

Heather Grey [M]

Heather Grey/Black

Light Navy

[M] = Available in youth size.



# RECYCLED



Richardson Recycled is where style meets sustainability. Each cap in this collection is crafted from recycled materials, boasting Global Recycled Standard Certification or U TRUST® verification. This range exemplifies our dedication to sustainable fashion, offering you environmentally responsible headwear that doesn't compromise on style.

**324RE Olive**

Etched Genuine Cork Applique

## 324RE **NEW**

ODELL  RECYCLED POLYESTER

Named for Oregon Surveyor General William Holman Odell, Odell Lake is one of many lakes within the Deschutes National Forest of Central Oregon. Our eponymous cap is responsibly constructed from 65% Global Recycled Standard Certified cotton and is perfect for a day on the water.

**STYLE:** 6 Panel

**PROFILE:** Relaxed

**BILL:** Precurved

**SWEATBAND:** Standard

**FABRIC:** Recycled Cotton Canvas

**COMPOSITION:**

65% Recycled Cotton/35% Cotton

**FIT:** Adjustable

**CLOSURE:** Cloth Hideaway Backstrap

**SIZE:** OSFM



**Navy**  
Woven Label



Certified according to the Global Recycled Standard



Black



Dark Grey



Navy



Olive



Red



Royal



White

# 112RE

## RECYCLED TRUCKER RECYCLED POLYESTER

An Earth-friendly take on our 112 Trucker for environmentally conscious consumers. The 112RE is everything you love about our Original 112 Trucker with some sustainable differences. Made from Global Recycled Standard Certified recycled polyester, this cap delivers the classic fit and feel of our iconic trucker while helping to reduce plastic waste.

**STYLE:** 6 Panel  
**PROFILE:** Mid Pro  
**BILL:** Precurved

**SWEATBAND:** Standard  
**FABRIC:** Recycled Polyester Twill/  
Recycled Polyester Trucker Mesh  
**COMPOSITION:** 100% Recycled Polyester

**FIT:** Adjustable  
**CLOSURE:** Snapback  
**SIZE:** OSFM



Loden/Khaki  
Standard Embroidery



Certified according to the Global Recycled Standard



# 224RE

## RECYCLED PERFORMANCE RECYCLED POLYESTER WICKING

Constructed from 100% U TRUST® verified recycled polyester, the 224RE is a relaxed unstructured cap delivering lightweight performance and classic six-panel style with a hint of environmental consciousness for those who believe in speaking with their actions.

**STYLE:** 6 Panel  
**PROFILE:** Relaxed  
**BILL:** Precurved  
**SWEATBAND:** Stay-Dri  
**FABRIC:** Recycled Polyester  
**COMPOSITION:**  
95% Recycled Polyester/5% Spandex

**FIT:** Adjustable  
**CLOSURE:** Micro Hook-and-Loop Backstrap  
with Stretch D-Ring  
**SIZE:** OSFM



Heather Dark Grey  
Silicone Transfer



Certified under UNIFI's U Trust Verification Program



# 139RE

## RECYCLED KNIT RECYCLED POLYESTER

Made from 97% Global Recycled Standard Certified recycled polyester, our 139RE features a four-seam construction with roll-up cuff, perfect for environmentally conscious consumers who want a classic beanie with all-day wearability.

**STYLE:** Beanie

**SIZE:** OSFM

**FABRIC:** Recycled Polyester

**COMPOSITION:** 97% Recycled Polyester/  
3% Spandex



Certified according to the Global Recycled Standard



**Loden**

Etched Faux Leather Clip Label | OD441



Birch



Black



Charcoal



Grey



Loden



Navy

# 254RE

## ASHLAND RECYCLED POLYESTER

At 7,532 feet, Mount Ashland is the highest peak in the Siskiyou Mountains of Southern Oregon and the namesake for our 254RE, a relaxed unstructured cap that delivers a casual, clean look from the mountains to the sea. Made from 100% Global Recycled Standard Certified recycled polyester, this cap is a responsible headwear choice that delivers timeless style in all situations.

**STYLE:** 6 Panel

**PROFILE:** Relaxed

**BILL:** Precurved

**SWEATBAND:** Standard

**FABRIC:** Recycled Polyester Twill

**COMPOSITION:** 100% Recycled Polyester



Fabric is 80% post-consumer & 20% pre-consumer recycled polyester  
Certified according to the Global Recycled Standard



**Charcoal**

Etched Faux Leather Applique



Black



Charcoal



Loden



Navy



White





# WORKWEAR

Built for when tough isn't enough, our Workwear collection is designed with the quality and fit you expect from Richardson. Crafted with rugged materials and built to the demands of the doers in our world, these caps are engineered for enduring performance.



112WF Navy  
Etched Faux Leather Applique

## 336 NEW

### BURNSIDE

Named for the bridge that bisects the heart of Portland, Oregon, the 336 Burnside is built to handle the hustle and bustle of the daily grind. Featuring a brushed canvas body and sturdy construction, this cap can take a beating and still look great. Thicker gauge thread and double-row stitching provide added strength for the long haul.



Wheat  
Embroidered Patch | OD488

**STYLE:** 5 Panel  
**PROFILE:** Mid Pro  
**BILL:** Precurved  
**SWEATBAND:** Standard  
**FABRIC:** Brushed Cotton Canvas  
**COMPOSITION:** 100% Cotton

**FIT:** Adjustable  
**CLOSURE:** Snapback  
**SIZE:** OSFM



Black



Dark Grey



Grey



Navy



Olive



Wheat

# 112WH **NEW**

## HAWTHORNE

Named for the oldest operating vertical lift bridge in the United States, this five-panel cap is built to stand up to whatever life throws at you. Featuring Original Martexin® Wax water-repellent treatment, the 112WH is made to withstand the elements and a hard day's work. Double-row stitching ensures exceptional strength and anti-corrosion metal eyelets deliver optimal airflow.



**Dark Olive/Coffee**  
Woven Patch | OD360

**STYLE:** 5 Panel

**PROFILE:** Mid Pro

**BILL:** Precurved

**SWEATBAND:** Standard

**FABRIC:** Martexin Wax Finish  
Cotton Canvas/Trucker Mesh

**COMPOSITION:**

FRONT: 100% Cotton

BACK: 100% Polyester

**FIT:** Adjustable

**CLOSURE:** Snapback

**SIZE:** OSFM



Black



Buck/Khaki



Burnt Red/Charcoal



Dark Olive/Coffee



Rhino/Light Grey



Whiskey/Brown

# 112WF **NEW**

## FREMONT

At 381 feet tall, the Fremont Bridge is a distinct feature of the Portland, Oregon skyline. This six-panel Workwear rendition of our world-famous 112 Trucker is designed to be just as distinct. Its mesh back and anti-corrosion eyelets keep you cool with plenty of airflow, while a coated twill front provides an extra layer of protection from the elements, enhancing durability and water-repellency for life on and off the job site.



**Charcoal/Black**  
Etched Faux Leather Applique | OD350

**STYLE:** 6 Panel

**PROFILE:** Mid Pro

**BILL:** Precurved

**SWEATBAND:** Standard

**FABRIC:** Coated Twill/Trucker Mesh

**COMPOSITION:**

FRONT: 63% Cotton/33% Polyester/4%PU

BACK: 100% Polyester

**FIT:** Adjustable

**CLOSURE:** Snapback

**SIZE:** OSFM



Brown



Burgundy/Black



Charcoal/Black



Khaki/Loden



Navy



Olive/Charcoal



# CAMO & BLAZE

Whether it's pursuing turkeys and upland birds, exploring sheds and morels, or tracking elk, a hunter's dedication knows no rest. Ensure their safety and elevate their style with our wide variety of caps tailored for the hunt.



112PFP Marsh Duck Camo/Loden  
Etched Genuine Leather Applique | CUW0200

## 112PFP **NEW**

### PRINTED FIVE PANEL TRUCKER

Our acclaimed 112 Trucker takes to the outdoors with this printed five-panel iteration. Available in a wide variety of camo prints, you'll be right at home huddled in the brush or kicking back on the patio in this outdoor take on a Richardson icon.



Blaze Duck Camo/Blaze  
Thick Etched Genuine Leather Applique

**STYLE:** 5 Panel  
**PROFILE:** Mid Pro  
**BILL:** Precurved  
**SWEATBAND:** Standard  
**FABRIC:** Cotton-Spandex Twill<sup>1</sup> or Polyester Twill<sup>2</sup>/Trucker Mesh  
**COMPOSITION:** See Below<sup>1,2</sup>

**FIT:** Adjustable  
**CLOSURE:** Snapback  
**SIZE:** OSFM



<sup>1</sup> DIGITAL AND GREEN CAMO COMPOSITION: FRONT: 97% Cotton/3% PU Spandex BACK: 100% Polyester | <sup>2</sup> DUCK, KRYPTEK, MOSSY OAK, AND REALTREE COMPOSITION: 100% Polyester | **NOTE:** Camouflage patterns may feature brand logos

# 112P

## PRINTED TRUCKER

The iconic design of our famous 112 Trucker gets a redesign for the great outdoors with this printed reimagining of the Richardson classic. A mesh back provides the best in ventilation and comfort, while the 112P's adjustable snapback allows you to lock in your perfect fit.



**Mossy Oak Obsession/Khaki**  
Woven Patch | CUW1700

**STYLE:** 6 Panel  
**PROFILE:** Mid Pro  
**BILL:** Precurved  
**SWEATBAND:** Standard  
**FABRIC:** Cotton-Spandex Twill/Trucker Mesh<sup>1</sup> or Polyester Twill/Trucker Mesh<sup>2</sup>  
**COMPOSITION:** See Below<sup>1,2</sup>

**FIT:** Adjustable  
**CLOSURE:** Snapback  
**SIZE:** OSFM



[S] = Available in small size.

<sup>1</sup> DESERT AND GREEN CAMO COMPOSITION: FRONT: 97% Cotton/3% PU Spandex BACK: 100% Polyester | <sup>2</sup> KRYPTEK, MOSSY OAK, AND REALTREE; DIGITAL CAMO COMPOSITION: 100% Polyester | **NOTE:** Camouflage patterns may feature brand logos

# 112PM

## PRINTED MESH TRUCKER

A stylish take on the always classic 112 Trucker, the 112PM is available in unique colorways incorporating camo and fade print mesh into its iconic design. Same airflow. Same adjustable snapback fastening. All new looks that make your 112PM truly yours.



**Brown/Desert Camo**  
Debossed Faux Leather Applique | OD349

**STYLE:** 6 Panel  
**PROFILE:** Mid Pro  
**BILL:** Precurved  
**SWEATBAND:** Standard  
**FABRIC:** Cotton-Spandex Twill/Trucker Mesh<sup>1</sup>, Cotton-Polyester Twill/Trucker Mesh<sup>2</sup>, or Polyester Twill/Trucker Mesh<sup>3</sup>  
**COMPOSITION:** See Below<sup>1,2,3</sup>

**FIT:** Adjustable  
**CLOSURE:** Snapback  
**SIZE:** OSFM



<sup>1</sup> GREEN CAMO COMPOSITION: FRONT: 97% Cotton/3% PU Spandex BACK: 100% Polyester | <sup>2</sup> SOLID COMPOSITION: FRONT: 60% Cotton/40% Polyester BACK: 100% Polyester | <sup>3</sup> MOSSY OAK COMPOSITION: 100% Polyester | **NOTE:** Camouflage patterns may feature brand logos

# 882/882FP **NEW**

## BLAZE ORANGE TRUCKER

With the same iconic build as our classic 112 Trucker, the 882 and 882FP feature either five-panel or six-panel construction and are made to stand out for safety. Both are made from durable 100% polyester and feature an adjustable snapback closure and hi-viz Blaze Orange color, perfect for hunting or a day on the range.

**STYLE:**

882: 6 Panel

882FP: 5 Panel

**PROFILE:** Mid Pro

**BILL:** Precurved

**SWEATBAND:** Standard

**FABRIC:** Polyester Canvas/Polyester Mesh

**COMPOSITION:** 100% Polyester

**FIT:** Adjustable

**CLOSURE:** Snapback

**SIZE:** OSFM



**882FP Blaze Orange**  
Standard Embroidery | OD342



882 Blaze Orange



882FP Blaze Orange

# 111P

## GARMENT WASHED PRINTED TRUCKER

Like the non-printed 111, the 111P is a remix of our famous 112 Trucker. A classic garment wash delivers an extra-casual look and comes in a variety of camo prints. The unstructured mesh back provides enhanced airflow for comfort while working in the yard or hunkering down in the blind.

**STYLE:** 6 Panel

**PROFILE:** Relaxed

**BILL:** Precurved

**SWEATBAND:** Standard

**FABRIC:** Cotton Twill/Soft Trucker Mesh<sup>1</sup> or

Polyester Twill/Soft Trucker Mesh<sup>2</sup>

**COMPOSITION:** See Below<sup>1,2</sup>

**FIT:** Adjustable

**CLOSURE:** Snapback

**SIZE:** OSFM



**Realtree Max-7/Buck**  
Woven Patch | CUW1300



Digital Camo/  
Light Green<sup>1</sup>



Green Camo/  
Black<sup>1</sup>



Kryptek Highlander/  
Brown<sup>2</sup>



Kryptek Typhon/  
Black<sup>2</sup>



Mossy Oak Bottomland/  
Black<sup>2</sup>



Mossy Oak Country DNA/  
Black<sup>2</sup>



Mossy Oak Habitat/  
Brown<sup>2</sup>



Mossy Oak Obsession/  
Khaki<sup>2</sup>



Realtree Edge/  
Brown<sup>2</sup>



Realtree Max-1 XT/  
Brown<sup>2</sup>



Realtree Max-7/  
Buck<sup>2</sup>



Realtree Original/  
Black<sup>2</sup>



Realtree Timber/  
Black<sup>2</sup>

<sup>1</sup> DIGITAL AND GREEN CAMO COMPOSITION: FRONT: 100% Cotton BACK: 100% Polyester | <sup>2</sup> KRYPTEK, MOSSY OAK, AND REALTREE COMPOSITION: 100% Polyester | **NOTE:** Camouflage patterns may feature brand logos

# 843

## CASUAL TWILL CAMO STRAPBACK

A variety of camo print patterns available in comfortable polyester or cotton twill fabrications make the 843 is the ideal six-panel cap for your next hunt. An adjustable hook-and-loop backstrap ensures a secure and precise fit, offering versatile sizing for adventurers of all ages.

**STYLE:** 6 Panel  
**PROFILE:** Low Pro  
**BILL:** Precurved  
**SWEATBAND:** Standard  
**FABRIC:** Cotton Twill<sup>1</sup> or Polyester Twill<sup>2</sup>  
**COMPOSITION:** See Below<sup>1,2</sup>

**FIT:** Adjustable  
**CLOSURE:** Hook-and-Loop Backstrap  
**SIZE:** OSFM



**Realtree Original**  
 Embroidered Patch | OD040



Digital Camo<sup>1</sup>



Green Camo<sup>1</sup>



Krytek Highlander<sup>2</sup>



Krytek Typhon<sup>2</sup>



Mossy Oak Bottomland<sup>2</sup>



Mossy Oak Country  
DNA<sup>2</sup>



Mossy Oak Obsession<sup>2</sup>



Realtree Edge<sup>2</sup>



Realtree Max-7<sup>2</sup>



Realtree Original<sup>2</sup>



Realtree Timber<sup>2</sup>

<sup>1</sup> DIGITAL AND GREEN CAMO COMPOSITION: 100% Cotton | <sup>2</sup> KRYTEK, MOSSY OAK, AND REALTREE COMPOSITION: 100% Polyester | **NOTE:** Camouflage patterns may feature brand logos

# 840

## RELAXED TWILL CAMO

When you want a casual camo cap that offers all-day comfort, look no further than our 840. Available in comfortable polyester or cotton twill fabrications and a variety of camo patterns, it features an adjustable hook-and-loop backstrap for a custom fit that's ready for any adventure.

**STYLE:** 6 Panel  
**PROFILE:** Relaxed  
**BILL:** Precurved  
**SWEATBAND:** Standard  
**FABRIC:** Cotton Twill<sup>1</sup> or Polyester Twill<sup>2</sup>  
**COMPOSITION:** See Below<sup>1,2</sup>

**FIT:** Adjustable  
**CLOSURE:** Hook-and-Loop Backstrap  
**SIZE:** OSFM



**Krytek Highlander**  
 Etched Genuine Leather Applique | CUW1800



Digital Camo<sup>1</sup>



Green Camo<sup>1</sup>



Krytek Highlander<sup>2</sup>



Krytek Typhon<sup>2</sup>



Mossy Oak Country  
DNA<sup>2</sup>



Realtree Edge<sup>2</sup>



Realtree Max-7<sup>2</sup>



Realtree Original<sup>2</sup>



Realtree Timber<sup>2</sup>

<sup>1</sup> DIGITAL AND GREEN CAMO COMPOSITION: 100% Cotton | <sup>2</sup> KRYTEK, MOSSY OAK, AND REALTREE COMPOSITION: 100% Polyester | **NOTE:** Camouflage patterns may feature brand logos

# 870/874

## PERFORMANCE CAMO WICKING

When your approach to the outdoors requires gear that's built for high performance, the 870 and 874 can heed the call. Featuring classic six-panel construction, your choice of a Relaxed (870) or Mid Pro (874) shape to dial-in the perfect fit, and a Stay-Dri sweatband for dependable moisture management. An adjustable hook-and-loop backstrap provides easy size adjustments on the go.

**STYLE:** 6 Panel  
**PROFILE:**  
870: Relaxed  
874: Mid Pro  
**BILL:** Precurved  
**SWEATBAND:** Stay-Dri  
**FABRIC:** Polyester Twill  
**COMPOSITION:** 100% Polyester

**FIT:** Adjustable  
**CLOSURE:** Hook-and-Loop Backstrap  
**SIZE:** OSFM



**874 Mossy Oak Elements Bonefish**  
Woven Patch | OD261  
Woven Clip Label | OD330



Kryptek Highlander



Kryptek Inferno  
ONLY AVAILABLE IN 874



Kryptek Neptune



Kryptek Pontus



Kryptek Typhon



Mossy Oak Blades  
ONLY AVAILABLE IN 874



Mossy Oak Elements  
Bonefish



Realtree Fishing Light Blue

**NOTE:** Camouflage patterns may feature brand logos

# 844

## DUCK CLOTH FRONT WITH CAMO BACK

For the outdoor enthusiast and all those who appreciate the style camo provides, the 844 perfectly combines fashion and function. With canvas duck cloth on the front panels and bill, and an adjustable hook-and-loop backstrap, it's durable and versatile no matter the environment.

**STYLE:** 6 Panel  
**PROFILE:** Low Pro  
**BILL:** Precurved  
**SWEATBAND:** Standard  
**FABRIC:** Cotton Twill/Polyester Twill  
**COMPOSITION:**  
FRONT: 100% Cotton  
BACK: 100% Polyester

**FIT:** Adjustable  
**CLOSURE:** Hook-and-Loop Backstrap  
**SIZE:** OSFM



**Dark Olive/Realtree Edge**  
Debossed Faux Leather Applique



Buck/Kryptek Highlander



Buck/Realtree Max-7



Dark Olive/Realtree Edge

**NOTE:** Camouflage patterns may feature brand logos

# 862

## MULTICAM® TRUCKER NO BUTTON

Designed to withstand punishing circumstances, our 862 is made from NYCO ripstop fabric for high-grade resistance to natural wear and tear. A buttonless crown adds tactical benefits and a clean appearance, while polyester mesh allows for maximum airflow during active wear.

**STYLE:** 6 Panel  
**PROFILE:** Mid Pro  
**BILL:** Precurved  
**SWEATBAND:** Standard  
**FABRIC:** NYCO Ripstop/Trucker Mesh  
**COMPOSITION:**  
FRONT: 50% Nylon/50% Cotton  
BACK: 100% Polyester

**FIT:** Adjustable  
**CLOSURE:** Snapback  
**SIZE:** OSFM



**Black/Black**  
Embroidered Patch | OD047

**COLORS:** Undervisor is Black.



Black/Black



Original/Coyote Brown



Original/Flag

# 863

## STRUCTURED MULTICAM® NO BUTTON

This military-style multicam camo cap is built for tactical operators. Made with NYCO ripstop fabric, it features an adjustable hook-and-loop backstrap for simple sizing, while a no button crown relieves pressure points caused by ear protection.

**STYLE:** 6 Panel  
**PROFILE:** Low Pro  
**BILL:** Precurved  
**SWEATBAND:** Standard  
**FABRIC:** NYCO Ripstop  
**COMPOSITION:** 50% Nylon/50% Cotton

**FIT:** Adjustable  
**CLOSURE:** Hook-and-Loop Backstrap  
**SIZE:** OSFM



**Black**  
Etched Faux Leather Applique

**COLORS:** Undervisor is Black.



Black



Original

# 865

## R-FLEX MULTICAM® NO BUTTON

Constructed from performance nylon, the 865 is available in the same multicam camo pattern used by the US Military. A buttonless crown presents a clean, technical look while eliminating a common pressure point created by ear protection. R-Flex ensures a versatile fit without adjustment for this tactical performance headwear.

**STYLE:** 6 Panel  
**PROFILE:** Mid Pro  
**BILL:** Precurved  
**SWEATBAND:** Standard  
**FABRIC:** Performance Stretch Nylon  
**COMPOSITION:** 98% Nylon/2% PU Spandex

**FIT:** R-Flex  
**SIZE:**  
SM-MD (7 - 7 1/4)  
LG-XL (7 3/8 - 7 5/8)



**Original**  
Standard Embroidery

**COLORS:** Undervisor is Black.



Original



# 884

## BLAZE WITH DUCK CLOTH VISOR

With its structured blaze crown and duck cloth visor, the 884 is a timeless take on the classic hunter's cap. Adjustable hook-and-loop backstrap offers versatile sizing and six-panel construction lends itself to a wide array of custom decoration.

**STYLE:** 6 Panel  
**PROFILE:** Low Pro  
**BILL:** Precurved  
**SWEATBAND:** Standard  
**FABRIC:** Heavyweight Polyester Canvas/  
Cotton Canvas  
**COMPOSITION:**  
**CROWN:** 100% Polyester  
**BILL:** 100% Cotton

**FIT:** Adjustable  
**CLOSURE:** Hook-and-Loop Backstrap  
**SIZE:** OSFM



Blaze Orange/Buck  
Standard Embroidery



Blaze Orange/Buck

# R93

## CASUAL CAMO

Our R93 six-panel is sure to become the go-to cap for the value-conscious outdoor enthusiast. Its Low Pro shape and Standard cotton sweatband deliver all-day comfort, while the adjustable hook-and-loop backstrap ensures a secure fit.

**STYLE:** 6 Panel  
**PROFILE:** Low Pro  
**BILL:** Precurved  
**SWEATBAND:** Standard  
**FABRIC:** Polyester Twill  
**COMPOSITION:** 100% Polyester

**FIT:** Adjustable  
**CLOSURE:** Hook-and-Loop Backstrap  
**SIZE:** OSFM



Upland  
Embroidered Patch | OD349



Upland



# BRIMMED

Our Brimmed collection is your essential ally against the sun. Each hat is crafted for optimal sun protection using both traditional and performance materials. Perfect for outdoor adventures or adding a refined touch to your look, these hats are as practical as they are stylish.



**910 Charcoal/Black**  
Woven Patch | OD442

## 909 **NEW**

MCKENZIE WATER REPELLENT WICKING UPF PROTECTION

From high up in the Cascades to down in the Willamette Valley, the lightweight and water-repellent 909 McKenzie is made for all the elements the Western Oregon wilderness has to offer. With a wide 3" brim, UPF 50+ protection, and nylon construction, it's the ultimate sun-ready headwear for a day spent riding rapids or just paddling around.



**Moss**  
Woven Label | OD491

**STYLE:** Brimmed  
**SWEATBAND:** Stay-Dri  
**FABRIC:** Performance Nylon  
**COMPOSITION:** 100% Nylon

**FIT:** Adjustable  
**CLOSURE:** Drawcord  
**SIZE:**  
SM-MD (7 - 7 1/4)  
LG-XL (7 3/8 - 7 5/8)



Charcoal



Moss



White

# 910

## SUNRIVER WATER REPELLENT WICKING UPF PROTECTION

Like its namesake, our 910 Sunriver is made to meet the challenges of a day out on the river, the golf course, or just knocking around the yard. With an extra-wide brim, durable lightweight nylon construction, water-repellent technologies, and a UPF 35 rating, the Sunriver is the perfect hat for whatever your next outdoor adventure holds.

**STYLE:** Brimmed

**SWEATBAND:** Stay-Dri

**FABRIC:** Performance Nylon

**COMPOSITION:** 100% Nylon

**FIT:** Adjustable

**CLOSURE:** Drawcord

**SIZE:**

SM-MD (7 - 7 1/4)

LG-XL (7 3/8 - 7 5/8)



Charcoal/Black  
Woven Patch | OD442



Charcoal/Black



Moss/Charcoal



White/Charcoal

# 810

## LITE WIDE BRIM HAT WICKING UPF PROTECTION

Designed for the great outdoors, our UPF 35 wide-brim hat is perfect for enjoying the sunshine without getting scorched. Lite performance fabric features Stay-Dri technology to keep the wearer dry in the heat, while a toggle-fastened bungee saves you any chasing in the event of windy weather.

**STYLE:** Brimmed

**SWEATBAND:** Stay-Dri

**FABRIC:** Lite

**COMPOSITION:** 100% Polyester

**FIT:** Adjustable

**CLOSURE:** Bungee with Toggle

**SIZE:** OSFM



Navy  
Woven Label | OD098



Black



Charcoal



Navy



Purple



Red



Royal



Sky Blue



Slate



Stone



White

# 827

## WATERMAN

You'll have it made in the shade no matter where your day takes you with the 827 Waterman. Constructed from natural Lindu straw with a classic cattleman's crease in the crown, this hat sports an umbrella-like 4 1/2" brim, keeping you cool even in the hottest months of the year.

**STYLE:** Brimmed  
**SWEATBAND:** Comfort Stretch  
**FABRIC:** Straw  
**COMPOSITION:** 100% Straw

**CLOSURE:** Drawcord  
**SIZE:** OSFM



Straw  
Woven Patch



Straw

# 828

## LINED WATERMAN

Out on the water or posted up on the shore, when shade is in short supply, our 828 Lined Waterman is the perfect sun solution. The 4 1/2" brim offers ample coverage, and two different straw colors with underbill prints make the 828 a superior shade hat.

**STYLE:** Brimmed  
**SWEATBAND:** Comfort Stretch  
**FABRIC:** Straw  
**COMPOSITION:** 100% Straw

**CLOSURE:** Drawcord  
**SIZE:** OSFM



Natural/USA Flag  
Sublimated Patch | OD374



Olive/Green Camo

Natural/USA Flag

# 822

## STRAW SAFARI HAT

Whether wandering the savannah or strolling the banks of your favorite body of water, our 822 brings the cool, shady style you need to enjoy a day in the heat. And with a tall fabric wrap, perfect for holding tees or pencils, this Straw Safari Hat is right at home on the links, too.

**STYLE:** Brimmed  
**SWEATBAND:** Comfort Stretch  
**FABRIC:** Seagrass Straw  
**COMPOSITION:** 100% Seagrass Straw

**SIZE:** OSFM



**Khaki**  
Standard Embroidery



Black

Khaki

Navy

White

# 824

## CLASSIC GAMBLER HAT

Win or lose, the 824 always comes to play. Our Classic Gambler Hat offers ample coverage from the sun. 100% Toyo straw makes it a durable and breathable option for days at the track or on the golf course, so the only thing you'll be sweating is your wager.

**STYLE:** Brimmed  
**SWEATBAND:** Comfort Stretch  
**FABRIC:** Toyo Straw  
**COMPOSITION:** 100% Toyo Straw

**SIZE:** OSFM



**Black**  
Etched Genuine Leather Applique



Black

Khaki

Navy

White



# VISORS



Make your own shade with Richardson visors. Crafted to provide focused sun protection while maintaining a sleek, open-top style, our visors are ideal for active or casual wear, combining comfort and practicality.

**709 Black**  
Standard Embroidery

## 160

### LITE PERFORMANCE VISOR WICKING

Whether heading out on a run, embarking on a hike, or just hitting the links at mid-day, you can count on the Lite Performance Visor to protect your eyes from the sun. Featuring our lightest-weight performance fabric with Stay-Dri technology to wick away sweat.

**STYLE:** Visor  
**BILL:** Precurved  
**SWEATBAND:** Stay-Dri  
**FABRIC:** Lite  
**COMPOSITION:** 100% Polyester

**FIT:** Adjustable  
**CLOSURE:** Hook-and-Loop  
Backstrap with D-Ring  
**SIZE:** OSFM



**Navy**  
Standard Embroidery



Black



Charcoal



Navy



Red



Royal



Sky Blue



Stone



White

# 712

## TRUCKER VISOR

An open-air variation of America's favorite cap, the 712 takes the style of our renown 112 Trucker and remixes it with classic sport visor design. Featuring a 2" front panel and adjustable snapback, this casual visor keeps the sun out of your eyes, the wind in your hair, and adventure on your mind.

**STYLE:** Visor  
**BILL:** Precurved  
**SWEATBAND:** Standard  
**FABRIC:** Cotton-Polyester Twill/Trucker Mesh

**FIT:** Adjustable  
**CLOSURE:** Snapback  
**SIZE:** OSFM  
**COMPOSITION:** FRONT: 60% Cotton/40% Polyester  
BACK: 100% Polyester



Heather Grey/Black  
Standard Embroidery



# 707

## PULSE VISOR WITH PRO MESH WICKING

Constructed with our lightweight Pulse performance fabric accented with Pro Mesh, the 707 offers solid protection from the glare of the sun while still allowing you to catch a breeze in your hair as you chase down that fly ball.

**STYLE:** Visor  
**BILL:** Precurved  
**SWEATBAND:** Stay-Dri  
**FABRIC:** Pulse/Pro Mesh

**FIT:** Adjustable  
**CLOSURE:** Hook-and-Loop Backstrap  
**SIZE:** OSFM  
**COMPOSITION:** FRONT: 98% Polyester/2% Spandex | BACK: 100% Polyester



Cardinal  
Standard Embroidery



# 709

## IGNITE LT VISOR WICKING

Lightweight, versatile, and breathable, the 709 is made using our Ignite LT performance fabric for enhanced durability and an improved fit. It features a 2" front panel, a Stay-Dri sweatband, and a micro hook-and-loop backstrap with D-ring to dial-in the perfect fit.

**STYLE:** Visor  
**BILL:** Precurved  
**SWEATBAND:** Stay-Dri  
**FABRIC:** Ignite LT  
**COMPOSITION:** 98% Polyester/2% Spandex

**FIT:** Adjustable  
**CLOSURE:** Micro Hook-and-Loop Backstrap with D-Ring  
**SIZE:** OSFM



Grey  
Standard Embroidery with Side Embroidery



# 740

## PRO MESH VISOR

Created with on-field performance in mind, the 740 is constructed with lightweight Pro Mesh for an athletic look and feel, while its hook-and-loop backstrap makes it easy to find your perfect fit.

**STYLE:** Visor

**BILL:** Precurved

**SWEATBAND:** Standard

**FABRIC:** ProMesh

**COMPOSITION:** 100% Polyester

**FIT:** Adjustable

**CLOSURE:** Hook-and-Loop Backstrap

**SIZE:** OSFM



White  
Standard Embroidery



Black



Dark Green



Grey



Maroon



Navy



Purple



Red



Royal



White

# 715

## CLASSIC GOLF VISOR WICKING

A chino twill construction makes our 715 Classic Golf Visor perfect for hitting the links and the clubhouse. Its enhanced durability holds its shape hole after hole—no matter how much time you spend in the sand trap—providing extra sun protection and a larger front panel for bold decoration.

**STYLE:** Visor

**BILL:** Precurved

**SWEATBAND:** Stay-Dri

**FABRIC:** Heavyweight Cotton Twill

**COMPOSITION:** 100% Cotton

**FIT:** Adjustable

**CLOSURE:** Cloth Backstrap

**SIZE:** OSFM



Charcoal  
Silicone Transfer



Black



Charcoal



Navy



White





# BEANIES

Richardson Beanies are where warmth and style intertwine. Crafted to provide the utmost comfort and a fashionable edge in cooler weather. From classic designs to contemporary styles, our beanies are made with premium materials, ensuring durability and a cozy fit.



139 Sand/Tan/Sand  
Woven Patch | OD360

## 135

### SHORT POM BEANIE

The 135 Short Pom Beanie is a shorter profile riff on our original striped pom beanie. Constructed from the same 100% lightweight acrylic yarn, this beanie features a top pom and ribbed cuff.

**STYLE:** Beanie

**SIZE:** OSFM

**FABRIC:** Acrylic

**COMPOSITION:** 100% Acrylic



Heather Navy/Grey  
Etched Genuine Leather Clip Label



Black/Neon Pink/  
Neon Blue



Heather Charcoal/  
Red



Heather Navy/Grey



Heather Olive/Dark  
Olive



Heather Red/Grey



Heather Royal/Grey



Sand/Tan/Sand



Tan/Dark Green/  
Deep Red

# 134

## STRIPED BEANIE WITH CUFF & POM

100% lightweight acrylic construction gives this beanie a soft and warm feel. The extra-wide solid-color cuff offers plenty of space for decoration, while the three-stripe design with pom adds pops of complementary color to this classic beanie style.

**STYLE:** Beanie

**SIZE:** OSFM

**FABRIC:** Acrylic

**COMPOSITION:** 100% Acrylic

Navy/Red/White  
3D Embroidery



Black/Gold/White



Black/Grey/White



Black/Red/White



Cardinal/Black/White



Dark Green/Black/White



Maroon/Black/White



Navy/Col Blue/White



Navy/Grey/White



Navy/Red/White



Purple/Black/White



Red/Black/White



Royal/Black/White

# 148

## HEATHER BEANIE WITH CUFF & POM

The lightweight, 100% acrylic construction of the 148 is soft and warm. The tall, ribbed cuff provides 360° of placement space for custom decoration, while the multi-color pom adds a fun pop of flair to this contemporary style.

**STYLE:** Beanie

**SIZE:** OSFM

**FABRIC:** Acrylic

**COMPOSITION:** 100% Acrylic

Grey/White/Black  
Etched Genuine Leather Applique | OD027



Grey/Col Blue/Black



Grey/Gold/Black



Grey/Kelly/Black



Grey/Orange/Black



Grey/Purple/Black



Grey/Red/Black



Grey/Royal/Black



Grey/White/Black

# 154

## MERINO WOOL KNIT

Our 154 features a luxurious Merino wool blend with ribbed weave, short profile, and cuff for added insulation. This perfectly classic beanie looks right at home out on the wharf or bellied up at the local watering hole, and presents 360° of placement space for a custom etched leather applique.

**STYLE:** Beanie

**SIZE:** OSFM

**FABRIC:** Acrylic Wool Nylon Blend

**COMPOSITION:** 64% Acrylic/  
22% Wool/14% Nylon

**Black**  
Etched Genuine Leather Applique



Black



Charcoal



Grey



Loden

# 146

## WAFFLE KNIT BEANIE WITH CUFF

Classic style, comfort, and versatility have made our Waffle Knit Beanie an instant classic among those wishing for winter warmth. Mid-weight acrylic is comfortable and light, giving the 146 a snug, woolen look and feel, while the waffled cuff provides plenty of space for decoration and added insulation from the cold.

**STYLE:** Beanie

**SIZE:** OSFM

**FABRIC:** Acrylic

**COMPOSITION:** 100% Acrylic

**Camel**  
Etched Faux Leather Applique | OD361



Avocado



Birch



Black



Blush



Burgundy



Camel



Cinnamon Mocha



Clay



Coral



Curry



Dark Sand



Formosa Green



Gun Metal



Heather Charcoal



Heather Grey



Navy



Rust



Slate

# 137

## HEATHERED BEANIE WITH CUFF

Our heathered knit beanie is right at home wherever it goes. Its 100% acrylic, four-seam construction is lightweight and stretchable without sacrificing warmth. And the low-profile knit creates a cozy, comfortable wool-like feel ideal for all-day wear.

**STYLE:** Beanie

**SIZE:** OSFM

**FABRIC:** Acrylic

**COMPOSITION:** 100% Acrylic

**Heather Grey**  
Standard Embroidery with Woven Clip Label



Heather Black



Heather Grey



Heather Gun Metal



Heather Lodén



Heather Navy



Heather Oatmeal



Heather Red



Heather Royal

# 139RE

## RECYCLED KNIT RECYCLED POLYESTER

With its 97% recycled polyester four-seam construction and classic roll-up cuff, our Recycled Knit Beanie offers a casual look with environmentally conscious consumers in mind.

**STYLE:** Beanie

**SIZE:** OSFM

**FABRIC:** Recycled Polyester

**COMPOSITION:** 97% Recycled Polyester/  
3% Spandex

**Navy**  
Etched Faux Leather Clip Label | OD441



Birch



Black



Charcoal



Grey



Lodén



Navy

# 157

## SPECKLED KNIT

This speckled knit delivers peak fall vibes. From its unique, horizontally banded pattern, to its vibrant colorways, to its loose-but-not-slouchy fit—this uniquely textured beanie is perfect for patio weather.

**STYLE:** Beanie

**SIZE:** OSFM

**FABRIC:** Acrylic Polyester Blend

**COMPOSITION:** 95% Acrylic/5% Polyester



**Rust**  
Woven Clip Label | OD334



Coral



Heather Charcoal



Heather Grey



Heather Oatmeal



Rust



Sage



Wheat

# 141

## CHUNK TWIST KNIT BEANIE WITH CUFF & POM

Out on the slopes or sitting around the fire, our 141 is a great fit for cold-weather activities. It's the fashion-forward cousin of our Chunk Twist Knit Beanie with an oversized pom and thick gauge twist knit. And its lightweight, 100% acrylic construction produces a snug, wool-like feel.

**STYLE:** Beanie

**SIZE:** OSFM

**FABRIC:** Acrylic

**COMPOSITION:** 100% Acrylic



**Clay**  
Woven Clip Label



Avocado



Black



Blush



Burgundy



Camel



Cinnamon Mocha



Clay



Cream/Mocha



Curry



Dark Sand



Formosa Green



Gun Metal



Heather Charcoal



Heather Grey/Rust



Seafoam



Slate



Stone/Navya

# 143

## CHUNK CABLE BEANIE WITH CUFF & POM

The 143's thick, vertical cable knit provides added weight and slouch, and its ribbed cuff and playful pom come in solid or contrasting colors for additional customization and style. 100% acrylic construction gives the beanie a warm, woolen touch, cozying up this stylish winter classic.

**STYLE:** Beanie

**SIZE:** OSFM

**FABRIC:** Acrylic

**COMPOSITION:** 100% Acrylic

**Formosa Green**  
Rubber Patch | OD358



Avocado

Black

Blush

Burgundy

Camel

Cinnamon Mocha

Clay

Cream/Mocha

Curry

Dark Sand

Formosa Green

Gun Metal

Heather Charcoal

Heather Grey/Rust

Heather Grey

Navy

Slate

Stone/Navy

# 145

## SCRUNCH BEANIE

Crafted with a unique alternating stacked knit pattern, the 145 adds a new dimension to the simple slouch fit. Constructed entirely from 100% acrylic for wool-like warmth and comfort, it's perfect for the outdoors, even in the coldest months of the year.

**STYLE:** Beanie

**SIZE:** OSFM

**FABRIC:** Acrylic

**COMPOSITION:** 100% Acrylic

**Avocado**  
Woven Label | OD378



Avocado

Birch

Black

Blush

Burgundy

Camel

Cinnamon Mocha

Clay

Coral

Curry

Dark Sand

Formosa Green

Gun Metal

Heather Charcoal

Heather Grey

Navy

Rust

Slate

# 149

## SUPER SLOUCH KNIT BEANIE

Crafted with lightweight 100% acrylic this casual beanie is both stylish and comfortable. It's super-warm, super-soft, and super-slouchy with a wool-like appearance and traditional ribbed knit, it's fit for any occasion.

**STYLE:** Beanie  
**FABRIC:** Acrylic  
**COMPOSITION:** 100% Acrylic

**SIZE:** OSFM

**Blush**  
Woven Clip Label



# 147

## SLOUCH KNIT BEANIE

At home on the slopes or cozied up at your local coffee shop, our 147 is the perfect choice for everyday wear. Constructed using lightweight 100% acrylic for added warmth and a comfortable, wool-like touch—it's a soft, stylish look for all seasons.

**STYLE:** Beanie  
**FABRIC:** Acrylic  
**COMPOSITION:** 100% Acrylic

**SIZE:** OSFM

**Slate**  
Etched Faux Leather Clip Label | OD440



# 130

## MARLED BEANIE

This stylish, lightweight beanie is made with marled yarn—a fusion of various colors twisted together to create a unique and elevated look. Its 100% acrylic construction carries a wool-like appearance making it soft, warm, and suitable for both indoor and outdoor wear.

**STYLE:** Beanie

**SIZE:** OSFM

**FABRIC:** Acrylic

**COMPOSITION:** 100% Acrylic

**Olive/Khaki/Light Khaki**  
Woven Clip Label | OD377



Black/Grey/Charcoal



Navy/Grey/White



Olive/Khaki/Light Khaki



Pink/Grey/Light Khaki



Red/Grey/Charcoal



Royal/Grey/Charcoal

# 121

## CAMO MICROFLEECE BEANIE

The Camo Microfleece Beanie features all-over camouflage to help the wearer blend into natural environments, as well as 360° of space to apply a custom patch or embroidery. Made with 100% lightweight polyester microfleece, our 121 is quick-drying to keep you comfortable and warm while you stay undetected.

**STYLE:** Beanie

**SIZE:** OSFM

**FABRIC:** Polyester Microfleece

**COMPOSITION:** 90% Polyester/  
10% Spandex

**Mossy Oak Break-Up Country**  
Etched Genuine Leather Applique



Mossy Oak Break-Up  
Country



Realtree Edge



Realtree Max-7

**NOTE:** Camouflage patterns may feature brand logos





## DISPLAY FIXTURES & SAMPLE KITS



PREMIUM TOWER DISPLAY



PREMIUM FLOOR DISPLAY



TRAVEL COUNTER DISPLAY



SAMPLE KIT BAG

### DISPLAY FIXTURES

PRODUCT NUMBER	DESCRIPTION
PREMIUM FLOOR DISPLAY	Premium floor fixture with 6 shelves, sign, and catalog holder
TRAVEL COUNTER DISPLAY	Counter display frame with folding shelves, display sign, 3 attached shelves
PREMIUM TOWER DISPLAY	Premium floor tower display, sign and 7 dual sided shelves (Displays caps on both sides)

### SAMPLE KITS

KIT NAME	DESCRIPTION
NEW STYLES	New 2023/2024 styles with decoration
TEAM	Assorted On-Field and Sideline styles with decoration
CORPORATE	Assorted Lifestyle, Casual and Relaxed styles with decoration
OUTDOOR	Assorted Outdoor and Camo styles with decoration
LARGE CAP BAG	Holds 24 caps
SMALL CAP BAG	Holds 12-15 caps

## CAP SIZING CHART

FITTED	6¾*	6½*	6%	6¼	6%	7	7%	7¼	7%	7½	7%	7¾	7%	8	
R-FLEX	YOUTH**					SM-MD									
	XS-SM														
	XS-SM			PTS20 ONLY								LG-XL			
INCHES	20	20%	20¼	21¼	21½	22	22¾	22¾	23¾	23¾	23¾	24¾	24¾	25	
CM	51	52	53	54	55	56	57	58	59	60	61	62	63	64	

\* Size 6¾ and 6½ not available in Fitted Caps \*\* Youth size available in PTS20 only

# GLOSSARY

## 5 Panel

The five-panel is made with a flat or pinched front, making it the perfect construction for models with a printed front panel. The seamless design also makes it one of the easiest cap styles to decorate.

## 6 Panel

Our six-panel style is inspired by classic baseball caps and is as authentic as the game itself. Available in a wide range of profiles and fits, this traditional cap style is the go-to for both players and headwear enthusiasts.

## 7 Panel

Richardson's unique, modern seven-panel style offers a large, seamless front panel with a curved top seam, creating a fashion-forward design that's great for a wide variety of decorations.

## Airmesh

Lightweight, 3D spacer mesh holds its shape without trapping heat, providing ventilation to keep you cool and comfortable all day long.

## Beanie

Also called knit caps, Beanies are designed primarily for cold weather conditions but are also worn year-round. Clip labels and patches are the best decoration methods for this style.

## Bill

The bill is located at the front of the cap and extends outward to provide shade from the sun. It is typically made from a material that maintains its shape and can be flat or curved, depending on the cap design.

## Bill Rope

This trim detail found where the crown meets the bill is a homage to mid-century golf style. Available in a variety of designs, including braided and paracord, it's a classic twist that brings vintage charm to modern headwear.

## Brimmed

Our Brimmed styles are designed for maximum protection from the elements and feature a 360-degree brim. Available in both performance fabrics and natural materials like straw, these styles are well-suited for applique or patch decorations.

## Buckram

This stiffer material, fused behind a cap's front panels, provides structure and shape, creating a crisp appearance and ensuring the cap retains its form over time.

## Button

A small, usually rounded part located at the top center of a cap's crown, the button secures the point where the cap's panels converge. Beyond its structural role, it can also be a decorative feature that complements a cap's overall color design.

## Comfort Stretch Sweatband

Our stretch-fit sweatband incorporates stretch fibers to simplify sizing and provide wearers with a comfortable fit all day, every day.

## Crown

The upper part of a cap that covers the head, forming the main body. Typically composed of panels that are sewn together creating the shape and structure of the cap. The crown's design, height, and construction are crucial in determining the cap's overall style and fit.

## Eyelet

These small holes, typically located around the crown, provide ventilation, allowing air to circulate and reducing heat buildup. They are usually reinforced with metal, stitched rings, or silicone and can serve as a subtle color hit to coordinate with the cap's overall color design.

## Flip-Up Stay

Positioned behind the front panel of a cap, the flip-up stay is commonly made from a stiff mesh material and helps add shape and structure to a cap.

## Floatable

Floatable caps - ideal for water-based activities - feature soft EVA foam in the bill or brim that allows the cap to float. This feature is especially valuable for activities like boating, fishing, or beach outings, providing peace of mind if your cap falls into the water.

## Full Pro

Our Full Pro profile is an athletic shape that's taller and wider than our Mid Pro, but with a lower crown height than our Hi Pro. This profile also has a deeper fit in the back panels compared to Mid Pro.

## Hi Pro

The Hi Pro profile is our nod to classic baseball crown shapes. It features a deeper all-around fit with tall front panels.

## Ignite LT

Available in both headwear and apparel, our lightest-weight fabric is a durable, woven polyester that stretches for improved fit and comfort while keeping athletes cool with Stay-Dri moisture management technology.

## Laser Perforation

A testament to our dedication to style and functionality, these precise, cleanly-cut openings enhance breathability, merging precision craftsmanship with modern style.

## Lite

Our lightest-weight fabric, Lite is woven with a subtle texture on its face for a modern, athletic look, while Stay-Dri moisture management technology keeps you cool and dry.

## Low Pro

Low Pro is our lower profile structured crown shape. Featuring buckram-lined front panels, this profile offers a more tailored fit.

## Matrix

Available in both headwear and apparel for a head-to-toe look, this pin-dot mesh is a ventilated fabric that stretches for an improved fit and features Stay-Dri moisture management to keep athletes cool by accelerating the natural evaporation process.

## Mid Pro

Mid Pro is our most popular structured profile and is found across our product line, from performance baseball to the iconic 112. Over 50 years of cap-making experience has perfected this shape - not too high, not too low, just right.

## No Button

Our No Button crown is designed to eliminate pressure points caused by ear protection used in shooting. By removing the traditional button at the top of the cap, this innovation offers a smoother fit under ear protection devices for enhanced comfort during prolonged use.

## Packable

A lightweight foam construction in the bill allows caps to be folded and packed into a backpack and still come out wearable on the other side. These unstructured caps also allow for easy storage without impacting shape.

## Peach Brushing

A textile finishing process where the surface of the fabric is lightly abraded with brushes to create a soft, suede-like feel, reminiscent of the texture of a peach's skin. This technique enhances the tactile quality of the fabric and adds a subtle, luxurious appearance.

## Precurved

Precurved bills are shipped factory-shaped with the perfect curve, meaning the cap is ready to wear with a natural, ergonomic fit that conforms to the shape of the wearer's face, offering better sun protection and a classic look.

## Pro Mesh

Pro Mesh is our durable, heavy-weight, knitted mesh that features bird-eye patterning to improve ventilation.

## Pro Twill

Slightly stiffer and a bit heavier than our standard cotton twill, Pro Twill is designed to stand up to whatever the athlete can throw at it.

## Pulse

Our premium, on-field performance polyester is knitted for a clean, technical look that stretches to deliver a perfect fit, while Stay-Dri moisture management technology, wicks away sweat to keep players cool in the heat of the game.

## R-Flex

R-Flex stretch in the sweatband and crown makes sizing simple, improving comfort and performance during long periods of wear.

## Relaxed

Relaxed is our lowest profile, unstructured shape that fits closer to the head for a more casual look and feel.

## Ripstop

Ripstop fabric is lightweight yet highly durable and characterized by its reinforced weave that prevents tears and rips, making it ideal for outdoor gear, workwear, and any application where fabric strength and durability are paramount.

## Sandwich Insert

A contrasting strip of material is inserted along the edge of the cap's bill between the top and under panels, adding a subtle yet distinct color pop to the cap and a dynamic way to customize your team's look.

## Sportmesh

This tightly knitted stretch mesh gives a clean, technical appearance with improved fit characteristics for advanced performance and comfort during all-day wear.

## Standard Sweatband

Made from soft, durable cotton, our Standard sweatband provides all-day comfort while keeping sweat out of your eyes.

## Stay-Dri Moisture Management

Breathable performance polyester wicks moisture away from the body to the outer area of the fabric to accelerate evaporation. Faster evaporation helps keep the fabric dry and light so the wearer stays ready for whatever comes next.

## Stay-Dri Sweatband

Moisture-wicking technology where you need it most - the sweatband - to keep you cool, dry, and comfortable.

## Surge

Designed to replicate the look and feel of traditional wool serge (once the standard textile used for making baseball caps) this performance-spun polyester features Stay-Dri moisture management technology and impressive durability thanks to its woven construction.

## U-Form

Exclusive to the PTS line, this memory bill holds its shape so players can wear it curved, flat, or anywhere in between for a personalized look and improved protection from the glare of the sun.

### Underbill

The underside of a hat's bill or brim. This area can be designed with various colors, patterns, or textures, distinct from the rest of the cap, adding an additional element of style. The underbill's color and material can also reduce glare in sunny conditions.

### Water Repellent

A combination of tightly woven fabrics and hydrophobic treatments repels water to help keep you dry and protected from the elements.

### UPF Protection

UPF stands for Ultraviolet Protection Factor. It's a rating system that measures how much UV radiation a fabric blocks from the sun. The higher the UPF rating, the more UV radiation the fabric will block.

### Visor

Visors are designed to shield the sun from your eyes while keeping your head cool. Smaller, simple decorations tend to work best on this style of headwear.

# INDEX

## STYLE# PAGE

PTS20 <b>Y</b> .....	4
PTS20M .....	5
PTS30 .....	2
PTS50 .....	3
PTS65 .....	5
R15 .....	41
R18 .....	41
R20 .....	40
R22 .....	40
R45 .....	40
R55 .....	38
R65S <b>NEW</b> .....	39
R75S <b>NEW</b> .....	39
R93 .....	63
110 .....	29
111 <b>S</b> .....	26
111P .....	26,59
112 <b>Y S XL</b> .....	21
112+ .....	23
112FP .....	22
112FPR <b>NEW</b> .....	22
112P <b>S</b> .....	24,58
112PFP <b>NEW</b> .....	24,57
112PM .....	23,58
112RE .....	53
112WF <b>NEW</b> .....	56
112WH <b>NEW</b> .....	56
113 .....	28
115 <b>S</b> .....	25
115CH <b>S</b> .....	25
121 .....	78
130 .....	78
134 .....	72
135 .....	71
137 .....	74
139RE .....	54,74
141 .....	75
143 .....	76
145 .....	76
146 .....	73
147 .....	77
148 .....	72
149 .....	77
154 .....	73
155 .....	17
157 .....	75
160 .....	68
163 .....	29
168 .....	27
169 <b>NEW</b> .....	15,42
172 .....	8
173 .....	17,47

174 .....	19
176 .....	18
185 .....	8
203 .....	37
211 .....	49
212 .....	9
213 .....	28
214 .....	9
217 <b>Y</b> .....	51
220 .....	16
222 .....	18
224RE .....	53
225 .....	16
252 <b>Y</b> .....	33
252L .....	33
253 .....	45
254RE .....	54
255 <b>Y</b> .....	30
256 .....	44
257 .....	36
258 <b>NEW</b> .....	14
309 .....	37
312 .....	35
320 <b>S</b> .....	34
320T .....	34
324 .....	32
324RE <b>NEW</b> .....	52
326 <b>NEW</b> .....	31
336 <b>NEW</b> .....	55
355 <b>NEW</b> .....	15
380 .....	31
382 .....	32
414 .....	10
420 .....	13
435 .....	50
436 .....	50
485 .....	13
487 .....	13
495 .....	10
510 .....	36
511 .....	27
514 .....	7
525 .....	12
530 .....	12
533 .....	12
535 .....	12
540 .....	12
543 .....	12
545 .....	12
550 .....	12
585 .....	7
632 <b>NEW</b> .....	6

633 .....	12
634 .....	6
643 .....	12
653 .....	12
707 .....	11,69
709 .....	11,69
712 .....	69
715 .....	70
740 .....	70
810 .....	65
822 .....	67
824 .....	67
827 .....	66
828 .....	66
835 <b>NEW</b> .....	43
840 .....	60
843 .....	60
844 .....	61
862 .....	62
863 .....	62
865 .....	62
870 .....	61
874 .....	61
882 .....	59
882FP <b>NEW</b> .....	59
884 .....	63
909 <b>NEW</b> .....	64
910 .....	65
930 .....	45
931 .....	48
932 .....	51
933 .....	47
934 .....	46
935 .....	43
937 .....	49
938 .....	48
939 .....	44
942 .....	46

### SPECIAL SIZING KEY

**Y** YOUTH SIZE AVAILABLE

**S** SMALL SIZE AVAILABLE

**XL** EXTRA LARGE SIZE AVAILABLE



***RICHARDSON***<sup>®</sup>

---

P.O. BOX 71130 Springfield, OR 97475  
[www.richardsonsports.com](http://www.richardsonsports.com)

