



# TEAM PRODUCT LINE PLAN



**RICHARDSON**

**2024**

# THE FUTURE IS NOW.

This game has been evolving for over a century, and since 1970, we’ve evolved with it.

Today, the highest caliber ballplayers know small advantages make all the difference. Richardson delivers the edge they count on to keep them ahead of the competition. We dream, design, and dedicate ourselves to the future of the game so players can focus on playing.

Baseball is the soul of the Richardson brand, and 2024 marks a revolution in our commitment to the diamond. Whether it’s our reimagined On-Field category featuring the industry-leading PTS and Select collections, the addition of softball to the teams we proudly serve, our all-new stock uniform line, or our new Performance Headwear and Apparel collection, we’re confident when we say nothing beats a Richardson.

## CONTENTS

<b>HEADWEAR</b>	3
PERFORMANCE TEAM SERIES	4
SELECT	14
<b>UNIFORMS</b>	21
BASEBALL JERSEYS	
- PERFORMANCE TEAM SERIES	22
- SELECT	24
BASEBALL PANTS	
- PERFORMANCE TEAM SERIES	27
- SELECT	30
SOFTBALL JERSEYS	
- PERFORMANCE TEAM SERIES	31
- SELECT	32
SOFTBALL PANTS	
- PERFORMANCE TEAM SERIES	34
<b>APPAREL</b>	35
MENS	
- PTS OUTERWEAR	36
- PERFORMANCE APPAREL	37
WOMENS	
- PTS OUTERWEAR	42
- PERFORMANCE APPAREL	43
<b>ACCESSORIES</b>	44
PERFORMANCE TEAM SERIES	45
<b>INDEX</b>	47

## RICHARDSON CUSTOMIZATION LEVELS

### HEADWEAR

#### STOCK

Richardson offers top-quality headwear with premium decoration options from detailed patches to 3D embroidery. With expert design services and three Decoration Centers across the US, we can quickly bring your vision to life.

#### CUSTOM EXPRESS

Customize your Performance Team Series cap fast! Choose your base colorway, add your preferred button and eyelet colors, then top it off with premium 3D embroidery or custom rubber patches. Assembled in Oregon by our skilled hatmakers.

#### CUSTOM USA

Hand-assembled at Richardson HQ in Oregon, Custom USA combines pro-level customization with lightning-fast turn times. Choose your colors, add extras like piping or patterned visors, and finish it with our industry-leading decoration options.

#### CUSTOM ULTRA ON-FIELD

Custom Ultra On-Field brings pro-level customization to baseball and softball teams that demand the best. Fully custom gear available on Performance Team Series and Select models and tailored to your team’s specifications.

### UNIFORMS, APPAREL, AND ACCESSORIES

#### CUSTOM ULTRA EXPRESS

Richardson’s Custom Ultra Express delivers Richardson’s legendary quality, full sublimation, and our quickest turn times for your team’s uniforms and apparel.

#### CUSTOM ULTRA ON-FIELD

Custom Ultra On-Field brings pro-level customization to baseball and softball teams that demand the best. Fully custom gear available on Performance Team Series and Select models and tailored to your team’s specifications.

# HEADWEAR



### PTS30 IGNITE LT R-FLEX

**STOCK**

The stock model of our PTS30 is a game-changer under the lights or peak summer sunshine. Constructed in a Mid Pro shape from our lightest-weight Ignite LT fabric, this cap features laser-vented back panels for maximum comfort and breathability. And it's available in three R-Flex sizes for flexible sizing.

MSRP: \$19.00

IGNITE LT U U-FORM R-FLEX STAY-DRI

**STYLE:** 6 Panel  
**PROFILE:** Mid Pro  
**BILL:** U-Form  
**SWEATBAND:** Stay-Dri  
**FABRIC:** Ignite LT  
**COMPOSITION:** 98% Polyester/2% Spandex

**FIT:** R-Flex  
**SIZE:**  
 XS-SM (6 5/8 - 7)  
 SM-MD (7 - 7 1/4)  
 LG-XL (7 3/8 - 7 5/8)



# PTS30C IGNITE LT R-FLEX

CUSTOM USA

Our Custom USA program allows you to select custom colors for the crown, bill, button, and eyelets of your PTS30 Ignite LT R-Flex cap. Hand-assembled in Oregon, you can add piping, and choose from sandwich, patterned, or solid bill options to give your team a look that's all their own.

MSRP: \$30.00

IGNITE LT U-FORM R-FLEX STAY-DRI

**STYLE:** 6 Panel  
**PROFILE:** Mid Pro  
**BILL:** U-Form  
**SWEATBAND:** Stay-Dri  
**FABRIC:** Ignite LT  
**COMPOSITION:** 98% Polyester/2% Spandex

**FIT:** R-Flex  
**SIZE:**  
XS-SM (6 5/8 - 7)  
SM-MD (7 - 7 1/4)  
LG-XL (7 3/8 - 7 5/8)



SEE COLOR OPTIONS AND CUSTOMIZE AT RICHARDSONSPORTS.COM

# PTS30CU IGNITE LT R-FLEX

CUSTOM ULTRA ON-FIELD

Our Custom Ultra On-Field program allows for full customization of our on-field products, including our PTS30 Ignite LT R-Flex cap. Choose from unique colors, trims and decorations to create a completely custom look.

MSRP: \$36.00

IGNITE LT U-FORM R-FLEX STAY-DRI

**STYLE:** 6 Panel  
**PROFILE:** Mid Pro  
**BILL:** U-Form  
**SWEATBAND:** Stay-Dri  
**FABRIC:** Ignite LT  
**COMPOSITION:** 98% Polyester/2% Spandex

**FIT:** R-Flex  
**SIZE:**  
XS-SM (6 5/8 - 7)  
SM-MD (7 - 7 1/4)  
LG-XL (7 3/8 - 7 5/8)



SEE COLOR OPTIONS AND CUSTOMIZE AT RICHARDSONSPORTS.COM

# PTS20 PULSE R-FLEX

**STOCK**

Tested and approved by players at every level of the game, the stock option PTS20 is our best-selling on-field performance cap. Featuring Pulse fabric with Stay-Dri technology for the ultimate in comfort and breathability, and a shapeable U-Form bill for the perfect custom curve.

MSRP: \$18.00

PULSE U-FORM R-FLEX STAY-DRI



**STYLE:** 6 Panel  
**PROFILE:** Mid Pro  
**BILL:** U-Form  
**SWEATBAND:** Stay-Dri  
**FABRIC:** Pulse  
**COMPOSITION:** 98% Polyester/2% Spandex

**FIT:** R-Flex  
**SIZE:**  
 Y (6 3/8 - 6 5/8)  
 XS-SM (6 5/8 - 7)  
 SM-MD (7 - 7 1/4)  
 LG-XL (7 3/8 - 7 5/8)



[Y] = Available in youth size.

# PTS20CX/CXP PULSE R-FLEX

CUSTOM EXPRESS

Custom Express is the fastest way to order custom PTS20 Pulse R-Flex caps. Choose a base colorway for the crown and bill, then select custom colors for the buttons, eyelets, and piping (PTS20CXP only), then decorate with your team's logo for a custom look with a streamlined process.

MSRP: \$24.00 CX / \$26.00 CXP

 PULSE  U-FORM  R-FLEX  STAY-DRI

**STYLE:** 6 Panel  
**PROFILE:** Mid Pro  
**BILL:** U-Form  
**SWEATBAND:** Stay-Dri

**FABRIC:** Pulse  
**COMPOSITION:** 98% Polyester/2% Spandex  
**FIT:** R-Flex

**SIZE:**  
XS-SM (6 5/8 - 7)  
SM-MD (7 - 7 1/4)  
LG-XL (7 3/8 - 7 5/8)



SEE COLOR OPTIONS AND **CUSTOMIZE** AT RICHARDSONSPORTS.COM

# PTS20C PULSE R-FLEX

CUSTOM USA

Our Custom USA program allows you to select custom colors for the crown, bill, button, and eyelets of your PTS20 Pulse R-Flex cap. Hand-assembled at Richardson HQ in Oregon by our skilled hatters, you can add piping, and choose from sandwich, patterned, or solid bill options to give your team a look that's all their own.

MSRP: \$28.00

 PULSE  U-FORM  R-FLEX  STAY-DRI

**STYLE:** 6 Panel  
**PROFILE:** Mid Pro  
**BILL:** U-Form  
**SWEATBAND:** Stay-Dri

**FABRIC:** Pulse  
**COMPOSITION:** 98% Polyester/2% Spandex  
**FIT:** R-Flex

**SIZE:**  
XS-SM (6 5/8 - 7)  
SM-MD (7 - 7 1/4)  
LG-XL (7 3/8 - 7 5/8)



SEE COLOR OPTIONS AND **CUSTOMIZE** AT RICHARDSONSPORTS.COM

# PTS20CU PULSE R-FLEX

CUSTOM ULTRA ON-FIELD

Our Custom Ultra On-Field program allows for full customization of our on-field products, including the best-selling PTS20 Pulse R-Flex cap. Choose unique colors for each crown panel, bill, button, and eyelets. Then add option features like piping, sandwich bill insert, contrast-colored stitching, and additional embroidery locations. With Custom Ultra On-Field, you can create a completely custom look.

MSRP: \$36.00

 PULSE  U-FORM  R-FLEX  STAY-DRI

**STYLE:** 6 Panel  
**PROFILE:** Mid Pro  
**BILL:** U-Form  
**SWEATBAND:** Stay-Dri

**FABRIC:** Pulse  
**COMPOSITION:** 98% Polyester/2% Spandex  
**FIT:** R-Flex

**SIZE:**  
XS-SM (6 5/8 - 7)  
SM-MD (7 - 7 1/4)  
LG-XL (7 3/8 - 7 5/8)



SEE COLOR OPTIONS AND **CUSTOMIZE** AT RICHARDSONSPORTS.COM

# PTS20M PULSE MESH BACK R-FLEX

**STOCK**

The stock model of the PTS20M delivers the same best-selling performance as the original PTS20, with enhanced airflow thanks to its mesh back construction. Featuring Pulse fabric with Stay-Dri technology for the ultimate in comfort and breathability, and a shapeable U-Form bill for the perfect custom curve.

MSRP: \$17.50

PULSE U-FORM R-FLEX STAY-DRI



**STYLE:** 6 Panel  
**PROFILE:** Mid Pro  
**BILL:** U-Form  
**SWEATBAND:** Stay-Dri  
**FABRIC:** Pulse/Sportmesh  
**COMPOSITION:**  
 Front: 98% Polyester/2% Spandex  
 Back: 95% Polyester/5% PU span

**FIT:** R-Flex  
**SIZE:**  
 XS-SM [6 5/8 - 7]  
 SM-MD [7 - 7 1/4]  
 LG-XL [7 3/8 - 7 5/8]



Underbill is Charcoal.

# PTS20MCU PULSE MESH BACK R-FLEX

**CUSTOM** **ULTRA ON-FIELD**

Our Custom Ultra On-Field program allows for bespoke customization of every aspect of our best-selling PTS20 Pulse R-Flex cap with Sportmesh back panels. Choose from unique colors, trims, and decorations to create a completely customized look for your team.

MSRP: \$36.00

PULSE U-FORM R-FLEX STAY-DRI



**STYLE:** 6 Panel  
**PROFILE:** Mid Pro  
**BILL:** U-Form  
**SWEATBAND:** Stay-Dri  
**FABRIC:** Pulse/Sportmesh  
**COMPOSITION:**  
 Front: 98% Polyester/2% Spandex  
 Back: 95% Polyester/5% PU span

**FIT:** R-Flex  
**SIZE:**  
 XS-SM [6 5/8 - 7]  
 SM-MD [7 - 7 1/4]  
 LG-XL [7 3/8 - 7 5/8]

**SEE COLOR OPTIONS AND CUSTOMIZE AT RICHARDSONSPORTS.COM**





# PTS65 SURGE FITTED

STOCK

With a classic Full Pro baseball look intended to satisfy the traditionalists among us, our stock option PTS65 is made of durable Surge performance-spun polyester, designed to replicate wool serge. Surge keeps players cool, dry, and comfortable on the field, and is available in twelve fitted sizes to ensure an ideal fit.

MSRP: \$21.50

 SURGE  U-FORM  STAY-DRI

**STYLE:** 6 Panel  
**PROFILE:** Full Pro  
**BILL:** U-Form  
**SWEATBAND:** Stay-Dri  
**FABRIC:** Surge  
**COMPOSITION:** 100% Polyester

**FIT:** Fitted  
**SIZE:**  
6 5/8 - 8 (12 sizes in 1/8 increments)



Solid Black



Solid Dark Green



Solid Maroon



Solid Navy



Solid Red



Solid Royal

Underbill is Charcoal.

# PTS65CX SURGE FITTED

CUSTOM EXPRESS

Custom Express is the fastest way to order custom PTS65 Surge Fitted caps. Choose a base colorway for the crown and bill, then select custom colors for the buttons and eyelets then decorate with your team's logo for a custom look with a streamlined process.

MSRP: \$26.00

 SURGE  U-FORM  STAY-DRI

**STYLE:** 6 Panel  
**PROFILE:** Full Pro  
**BILL:** U-Form  
**SWEATBAND:** Stay-Dri  
**FABRIC:** Surge  
**COMPOSITION:** 100% Polyester

**FIT:** Fitted  
**SIZE:**  
6 5/8 - 8 (12 sizes in 1/8 increments)



SEE COLOR OPTIONS AND **CUSTOMIZE** AT [RICHARDSONSPORTS.COM](https://richardsonsports.com)

# PTS65C SURGE FITTED | PTS62C SURGE ADJ.

CUSTOM USA

Our Custom USA program allows you to select custom colors for the crown, bill, button, and eyelets of your PTS65 or PTS62 Surge cap. Hand-assembled here in Oregon, you can add piping, and sandwich, patterned, or solid bill options to give your team a completely custom look. An adjustable backstrap on the PTS62 makes sizing easy for players of all ages.

MSRP: \$30.00

 SURGE  U-FORM  STAY-DRI

**STYLE:** 6 Panel  
**PROFILE:** Full Pro  
**BILL:** U-Form  
**SWEATBAND:** Stay-Dri  
**FABRIC:** Surge  
**COMPOSITION:** 100% Polyester

**FIT:**  
Fitted (PTS65C) or Adjustable (PTS62C)  
**CLOSURE:**  
Snapback (PTS62C)  
**SIZE:**  
PTS62C: SM (6 1/2 - 7 1/8)  
MD-LG (7 - 7 3/4)  
PTS65C: 6 5/8 - 8 (12 sizes in 1/8 increments)



SEE COLOR OPTIONS AND CUSTOMIZE AT [RICHARDSONSPORTS.COM](https://richardsonsports.com)

# PTS65CU SURGE FITTED

CUSTOM ULTRA ON-FIELD

Our Custom Ultra On-Field program allows for full customization of our on-field products, including our PTS65 Surge Fitted cap. Choose from unique colors, trims, and decorations to create a completely custom look.

MSRP: \$48.00

 SURGE  U-FORM  STAY-DRI

**STYLE:** 6 Panel  
**PROFILE:** Full Pro  
**BILL:** U-Form  
**SWEATBAND:** Stay-Dri  
**FABRIC:** Surge  
**COMPOSITION:** 100% Polyester

**FIT:** Fitted  
**SIZE:**  
6 5/8 - 8 (12 sizes in 1/8 increments)



SEE COLOR OPTIONS AND CUSTOMIZE AT [RICHARDSONSPORTS.COM](https://richardsonsports.com)

# PTS50 MATRIX R-FLEX

**STOCK**

This cap was made for the heat of competition. Cut from an advanced performance micro-mesh fabric, the stock model of our Full Pro PTS50 Matrix R-Flex is designed to match the Matrix mesh used in our PTS uniforms and is available in three R-Flex sizes for flexible sizing.

MSRP: \$20.00

**MATRIX** **U-FORM** **R-FLEX** **STAY-DRI**



**STYLE:** 6 Panel  
**PROFILE:** Full Pro  
**BILL:** U-Form  
**SWEATBAND:** Stay-Dri  
**FABRIC:** Matrix  
**COMPOSITION:** 100% Polyester

**FIT:** R-Flex  
**SIZE:**  
 XS-SM [6 5/8 - 7]  
 SM-MD [7 - 7 1/4]  
 LG-XL [7 3/8 - 7 5/8]



# PTS50CU MATRIX R-FLEX

**CUSTOM** ULTRA ON-FIELD

Our Custom Ultra On-Field program allows for full customization of our on-field products, including our PTS50 Matrix R-Flex cap. Choose from unique colors, trims, and decorations to create a completely custom look.

MSRP: \$46.00

 MATRIX  U-FORM  R-FLEX  STAY-DRI

**STYLE:** 6 Panel  
**PROFILE:** Full Pro  
**BILL:** U-Form  
**SWEATBAND:** Stay-Dri  
**FABRIC:** Matrix  
**COMPOSITION:** 100% Polyester

**FIT:** R-Flex  
**SIZE:**  
XS-SM (6 5/8 - 7)  
SM-MD (7 - 7 1/4)  
LG-XL (7 3/8 - 7 5/8)



SEE COLOR OPTIONS AND **CUSTOMIZE** AT [RICHARDSONSPORTS.COM](https://richardsonsports.com)



# HEADWEAR

SELECT

## 512 SURGE SNAPBACK NEW MODEL

STOCK

Whether you're a player or a fan, our 512 shines bright under the lights of the big game. New innovation meets classic sport style as a comfort-focused Softsnap Adjustable Backstrap combines with a throwback Kelly Green underbill detail. A moisture-wicking Stay-Dri sweatband and Surge fabric add performance chops to this adjustable cap.

MSRP: \$15.00

SURGE STAY-DRI

**STYLE:** 6 Panel  
**PROFILE:** Mid Pro  
**BILL:** Precurved  
**SWEATBAND:** Stay-Dri  
**FABRIC:** Surge  
**COMPOSITION:** 100% Polyester  
**FIT:** Adjustable  
**CLOSURE:** Softsnap Adj. Backstrap  
**SIZE:** MD-LG [7 - 7 3/4]



## 514 SURGE ADJUSTABLE

STOCK

For those seeking a traditional uniform style, our 514 is one of our best-selling on-field caps. This six-panel features two sizing options and an adjustable hook-and-loop closure so you're sure to find a perfect fit for players at any level of the game.

MSRP: \$17.50

SURGE STAY-DRI

**STYLE:** 6 Panel  
**PROFILE:** Mid Pro  
**BILL:** Precurved  
**SWEATBAND:** Stay-Dri  
**FABRIC:** Surge  
**COMPOSITION:** 100% Polyester  
**FIT:** Adjustable  
**CLOSURE:** Hook-and-Loop Backstrap  
**SIZE:** SM [6 1/2 - 7 1/8] MD-LG [7 - 7 3/4]



# 632 LASER PERF R-FLEX SNAPBACK

**STOCK**

MSRP: \$18.50

Under the bright lights of the big game or putting in work in the offseason, the 632 is a performance take on our classic six-panel, Mid Pro baseball cap. A laser-perforated body made from Ignite LT performance fabric ensures maximum airflow, while a Stay-Dri sweatband keeps players dry.

**IGNITE LT** **R-FLEX** **STAY-DRI**



**STYLE:** 6 Panel  
**PROFILE:** Mid Pro  
**BILL:** Precurved  
**SWEATBAND:** Stay-Dri  
**FABRIC:** Ignite LT  
**COMPOSITION:** 98% Polyester/2% Spandex

**FIT:** R-Flex Adjustable  
**CLOSURE:** Snapback  
**SIZE:**  
 SM (6 1/2 - 7 1/8)  
 MD-LG (7 1/8 - 7 3/4)



# 172 PULSE SPORTMESH R-FLEX

**STOCK**

Pulse fabric front panels make the 172 cool, comfortable, and ready for action. A Sportmesh back, contrast stitching, and a precurved bill give an athletic look, while Stay-Dri wicking keeps working in all conditions.

MSRP: \$17.00

PULSE R-FLEX STAY-DRI

**STYLE:** 6 Panel  
**PROFILE:** Mid Pro  
**BILL:** Precurved  
**SWEATBAND:** Comfort Stretch  
**FABRIC:** Pulse/Sportmesh  
**COMPOSITION:**  
 Front: 98% Polyester/2% Spandex  
 Back: 95% Polyester/5% Spandex

**FIT:** R-Flex  
**SIZE:**  
 XS-SM (6 5/8 - 7)  
 SM-MD (7 - 7 1/4)  
 LG-XL (7 3/8 - 7 5/8)





# 414 PRO MESH ADJUSTABLE

**STOCK**

MSRP: \$16.00

Day and night, inning after inning, this classic baseball cap is made for competition at every level. Constructed with our Pro Mesh fabric, an adjustable hook-and-loop backstrap, and a Standard sweatband, it keeps players cool, calm, and collected so they can focus on the game.

**STYLE:** 6 Panel  
**PROFILE:** Mid Pro  
**BILL:** Precurved  
**SWEATBAND:** Standard  
**FABRIC:** Pro Mesh  
**COMPOSITION:** 100% Polyester

**FIT:** Adjustable  
**CLOSURE:** Hook-and-Loop Backstrap  
**SIZE:**  
 SM [6 1/2 - 7 1/8]  
 MD-LG [7 - 7 3/4]



Underbill is Grey.

# 495 PRO MESH R-FLEX

**STOCK**

MSRP: \$17.50

Like its adjustable counterpart, the 414, the lightweight and breathable 495 Pro Mesh R-Flex is made to keep players cool and comfortable on the field, in the dugout, and long after the final out. Made from our Pro Mesh fabric, it features R-Flex stretch for simple sizing and a versatile fit.

**R-FLEX**

**STYLE:** 6 Panel  
**PROFILE:** Mid Pro  
**BILL:** Precurved  
**SWEATBAND:** Comfort Stretch  
**FABRIC:** Pro Mesh  
**COMPOSITION:** 100% Polyester

**FIT:** R-Flex  
**SIZE:**  
 XS-SM [6 1/2 - 7]  
 SM-MD [7 - 7 1/4]  
 LG-XL [7 3/8 - 7 5/8]



Underbill is Grey.

# 585 ACRYLIC-WOOL BLEND R-FLEX

**STOCK**

Featuring a classic six-panel construction, this cap is cut from a blend of natural wool and acrylic stretch-fit fabric. Bringing together the best of heritage baseball textiles and traditional, on-field design—the 585 is a versatile cap suitable for players at all levels of the game.

MSRP: \$17.50

 R-FLEX



**STYLE:** 6 Panel  
**PROFILE:** Mid Pro  
**BILL:** Precurved  
**SWEATBAND:** Comfort Stretch  
**FABRIC:** Acrylic Wool Spandex Blend  
**COMPOSITION:**  
 83% Acrylic/15% Wool/2% Spandex

**FIT:** R-Flex  
**SIZE:**  
 XS-SM (6 1/2 - 7)  
 SM-MD (7 - 7 1/4)  
 LG-XL (7 3/8 - 7 5/8)



Underbill is Grey.

<sup>1</sup> SOLID WHITE COMPOSITION: 100% Acrylic

# 185 TWILL R-FLEX

**STOCK**

On the field, in the dugout, or cheering from the bleachers, our 185 is a versatile baseball cap made for any occasion. Its six-panel, Mid Pro crown offers classic ballcap style, while R-Flex stretch makes for simple sizing.

MSRP: \$14.50

 R-FLEX



**STYLE:** 6 Panel  
**PROFILE:** Mid Pro  
**BILL:** Precurved  
**SWEATBAND:** Comfort Stretch  
**FABRIC:** Stretch Cotton Polyester  
**COMPOSITION:**  
 62% Cotton/36% Polyester/2% Spandex

**FIT:** R-Flex  
**SIZE:**  
 XS-SM (6 1/2 - 7)  
 SM-MD (7 - 7 1/4)  
 LG-XL (7 3/8 - 7 5/8)



Underbill is Grey.

# 212 PRO TWILL SNAPBACK

**STOCK**

A throwback to the classic style of 90s-era snapback baseball caps, our 212 is an authentic six-panel Mid Pro shape ideal for on-field play. Its cotton-poly construction combines classic style and casual comfort for an easy-going look and feel. With more than 40 colorways, two sizing options, and an adjustable snapback, our 212 is game ready.

MSRP: \$10.00



**STYLE:** 6 Panel  
**PROFILE:** Mid Pro  
**BILL:** Precurved  
**SWEATBAND:** Standard  
**FABRIC:** Cotton-Polyester Twill  
**COMPOSITION:** 60% Cotton/40% Polyester

**FIT:** Adjustable  
**CLOSURE:** Snapback  
**SIZE:**  
 SM [6 1/2 - 7 1/8]  
 MD-LG [7 - 7 3/4]



Underbill is Grey.

# 214 PRO TWILL HOOK-AND-LOOP

**STOCK**

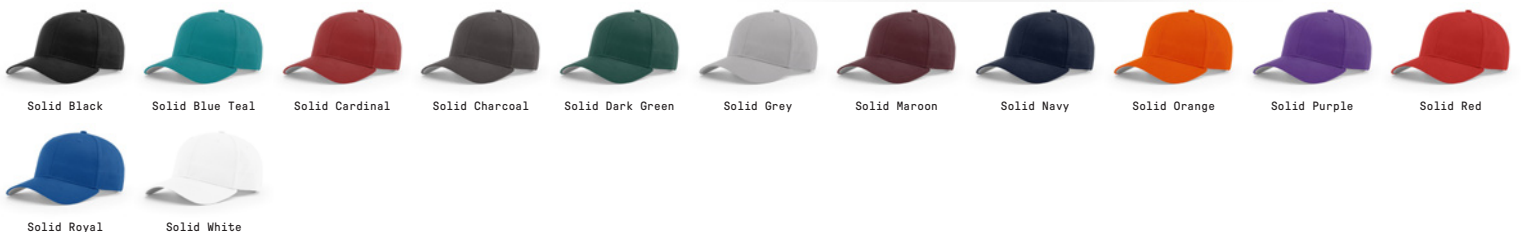
Just like our 212 snapback, the 214 combines the classic sport style and comfort of cotton-poly twill in a classic Mid Pro baseball cap design, but with a hook-and-loop adjustable backstrap. Featuring two sizes to ensure players of all ages can find their perfect fit.

MSRP: \$10.00



**STYLE:** 6 Panel  
**PROFILE:** Mid Pro  
**BILL:** Precurved  
**SWEATBAND:** Standard  
**FABRIC:** Cotton-Polyester Twill  
**COMPOSITION:** 60% Cotton/40% Polyester

**FIT:** Adjustable  
**CLOSURE:** Hook-and-Loop Backstrap  
**SIZE:**  
 SM [6 1/2 - 7 1/8]  
 MD-LG [7 - 7 3/4]



Underbill is Grey.

# 709 IGNITE LT VISOR

**STOCK**

Lightweight, versatile, and breathable, the 709 is made using our Ignite LT performance fabric for enhanced durability and an improved fit. It features a 2" front panel, a Stay-Dri sweatband, and a micro hook-and-loop backstrap with D-ring to dial-in the perfect fit.

MSRP: \$15.50

 **IGNITE LT**  **STAY-DRI**

**STYLE:** Visor  
**BILL:** Precurved  
**SWEATBAND:** Stay-Dri  
**FABRIC:** Ignite LT  
**COMPOSITION:** 98% Polyester/2% Spandex

**FIT:** Adjustable  
**CLOSURE:** Micro Hook-and-Loop Backstrap with D-Ring  
**SIZE:** OSFM



Underbill is Charcoal.

# 707 PULSE VISOR WITH PRO MESH

**STOCK**

Constructed with our lightweight Pulse performance fabric accented with Pro Mesh, the 707 offers solid protection from the glare of the sun while still allowing you to catch a breeze in your hair as you chase down that fly ball.

MSRP: \$13.00

 **PULSE**  **STAY-DRI**

**STYLE:** Visor  
**BILL:** Precurved  
**SWEATBAND:** Stay-Dri  
**FABRIC:** Pulse/Pro Mesh  
**COMPOSITION:**  
 Front: 98% Polyester/2% Spandex  
 Back: 100% Polyester

**FIT:** Adjustable  
**CLOSURE:** Hook-and-Loop Backstrap  
**SIZE:** OSFM



Underbill is Grey.

# UNIFORMS



### PTS BASEBALL FULL-BUTTON JERSEY

**CUSTOM** ULTRA ON-FIELD

Our PTS Baseball Full-Button Jersey offers classic baseball style and is crafted with features to enhance performance, including Max-Motion engineering and Stay-Dri moisture management. Make it yours with our Custom Ultra On-Field service, featuring sublimation and HYPR Twill – our premium tackle twill.

**STAY-DRI**

**STYLE:** Full-Button      **AGE:** Adult, Youth      **SIZE:** S-3XL (Adult)  
**PROFILE:** Jersey      **GENDER:** Men, Boys      YXS-YXL (Youth)

**FABRIC & COMPOSITION:**  
 Ignite LT - 98% Polyester/2% Spandex      Produra - 100% Polyester  
 Matrix Mesh - 100% Polyester      Protek - 100% Polyester

#PTS8013CU MSRP: \$105.00      #PTS8013YCU MSRP: \$100.00

**DECORATION OPTIONS:** +\$0.00 Full Sublimation  
 +\$10.00 HYPR Twill on Dyed Fabric  
 +\$20.00 HYPR Twill on Sublimated Fabric



### PTS BASEBALL 2-BUTTON JERSEY

**CUSTOM** ULTRA ON-FIELD

Featuring Stay-Dri moisture management and Max-Motion engineering, our PTS Baseball 2-Button Jersey delivers classic baseball style and adjustability thanks to its two-button neck construction. Customize it with our Custom Ultra On-Field service, featuring sublimation and HYPR Twill – our premium tackle twill.

**STAY-DRI**

**STYLE:** 2-Button      **AGE:** Adult, Youth      **SIZE:** S-3XL (Adult)  
**PROFILE:** Jersey      **GENDER:** Men, Boys      YXS-YXL (Youth)

**FABRIC & COMPOSITION:**  
 Ignite LT - 98% Polyester/2% Spandex      Produra - 100% Polyester  
 Matrix Mesh - 100% Polyester      Protek - 100% Polyester

#PTS8012CU MSRP: \$105.00      #PTS8012YCU MSRP: \$100.00

**DECORATION OPTIONS:** +\$0.00 Full Sublimation  
 +\$10.00 HYPR Twill on Dyed Fabric  
 +\$20.00 HYPR Twill on Sublimated Fabric



### PTS BASEBALL V-NECK JERSEY

**CUSTOM** ULTRA ON-FIELD

Engineered for peak performance on the diamond, our PTS Baseball V-Neck Jersey features a tailored, athletic fit designed with Stay-Dri moisture management and Max-Motion engineering for ultimate comfort. Make it yours with our Custom Ultra On-Field service, featuring sublimation and HYPR Twill – our premium tackle twill.

**STAY-DRI**

**STYLE:** V-Neck      **AGE:** Adult, Youth      **SIZE:** S-3XL (Adult)  
**PROFILE:** Jersey      **GENDER:** Men, Boys      YXS-YXL (Youth)

**FABRIC & COMPOSITION:**  
 Ignite LT - 98% Polyester/2% Spandex      Produra - 100% Polyester  
 Matrix Mesh - 100% Polyester      Protek - 100% Polyester

#PTS8011CU MSRP: \$105.00      #PTS8011YCU MSRP: \$100.00

**DECORATION OPTIONS:** +\$0.00 Full Sublimation  
 +\$10.00 HYPR Twill on Dyed Fabric  
 +\$20.00 HYPR Twill on Sublimated Fabric



# PTS BASEBALL FAUX FULL-BUTTON JERSEY

**CUSTOM** ULTRA ON-FIELD

An easy on-and-off alternative to the traditional full-button jersey, our PTS Baseball Faux Full-Button Jersey offers faux button construction and Stay-Dri moisture management for the ultimate in performance with a classic baseball look. Customize it with our Custom Ultra On-Field service, featuring sublimation and HYPR Twill – our premium tackle twill.

#PTS8015CU MSRP: \$105.00

#PTS8015YCU MSRP: \$100.00

**DECORATION OPTIONS:** +\$0.00 Full Sublimation  
 +\$10.00 HYPR Twill on Dyed Fabric  
 +\$20.00 HYPR Twill on Sublimated Fabric

**STAY-DRI**

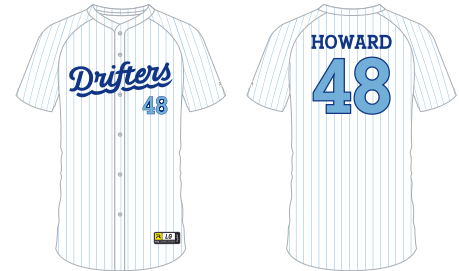
**STYLE:** Faux Full-Button  
**PROFILE:** Jersey

**AGE:** Adult, Youth  
**GENDER:** Men, Boys

**SIZE:** S-3XL (Adult)  
 YXS-YXL (Youth)

**FABRIC & COMPOSITION:**

Ignite LT - 98% Polyester/2% Spandex    Produra - 100% Polyester  
 Matrix Mesh - 100% Polyester            Protok - 100% Polyester



# PTS BASEBALL FULL-BUTTON SLEEVELESS JERSEY

**CUSTOM** ULTRA ON-FIELD

The PTS Baseball Full-Button Sleeveless Jersey offers traditional full-button styling with modern performance enhancements, including Stay-Dri moisture management and Max-Motion engineering to keep you cool and enhance range of motion. Customize it with our Custom Ultra On-Field service, featuring sublimation and HYPR Twill – our premium tackle twill.

#PTS8014CU MSRP: \$105.00

#PTS8014YCU MSRP: \$100.00

**DECORATION OPTIONS:** +\$0.00 Full Sublimation  
 +\$10.00 HYPR Twill on Dyed Fabric  
 +\$20.00 HYPR Twill on Sublimated Fabric

**STAY-DRI**

**STYLE:** Full-Button Sleeveless  
**PROFILE:** Jersey

**AGE:** Adult, Youth  
**GENDER:** Men, Boys

**SIZE:** S-3XL (Adult)  
 YXS-YXL (Youth)

**FABRIC & COMPOSITION:**

Ignite LT - 98% Polyester/2% Spandex    Produra - 100% Polyester  
 Matrix Mesh - 100% Polyester            Protok - 100% Polyester



# PTS BASEBALL FAUX FULL-BUTTON SLEEVELESS JERSEY

**CUSTOM** ULTRA ON-FIELD

With the same great features of our PTS Baseball Faux Full-Button Jersey, this sleeveless version offers full range of motion in the arms and shoulders, along with enhanced ventilation and a modern, athletic look. Make it your own with our Custom Ultra On-Field service, featuring sublimation and HYPR Twill – our premium tackle twill.

#PTS8016CU MSRP: \$105.00

#PTS8016YCU MSRP: \$100.00

**DECORATION OPTIONS:** +\$0.00 Full Sublimation  
 +\$10.00 HYPR Twill on Dyed Fabric  
 +\$20.00 HYPR Twill on Sublimated Fabric

**STAY-DRI**

**STYLE:** Faux Full-Button Sleeveless  
**PROFILE:** Jersey

**AGE:** Adult, Youth  
**GENDER:** Men, Boys

**SIZE:** S-3XL (Adult)  
 YXS-YXL (Youth)

**FABRIC & COMPOSITION:**

Ignite LT - 98% Polyester/2% Spandex    Produra - 100% Polyester  
 Matrix Mesh - 100% Polyester            Protok - 100% Polyester



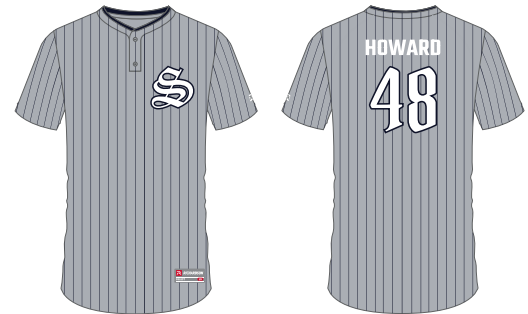
### SELECT BASEBALL 2-BUTTON JERSEY

**CUSTOM** ULTRA ON-FIELD

The Select Baseball 2-Button Jersey combines comfort, style, and superior performance through features like Stay-Dri moisture management technology and set-in sleeves. The two-button neck design offers a classic, customizable baseball look. Make it your own with our Custom Ultra On-Field service, featuring full sublimation.

#7012CU MSRP: \$72.50

#7012YCU MSRP: \$69.50



**STAY-DRI**

**STYLE:** 2-Button  
**PROFILE:** Jersey  
**AGE:** Adult, Youth  
**GENDER:** Men, Boys  
**SIZE:** S-3XL (Adult)  
 YXS-YXL (Youth)  
**FABRIC & COMPOSITION:**  
 Fly LT - 100% Polyester      Dryve LT - 100% Polyester

### SELECT BASEBALL CREW NECK JERSEY

**CUSTOM** ULTRA ON-FIELD

Recognize your full potential with our Select Baseball Crew Neck Jersey. Designed with Stay-Dri moisture management, this jersey features an athletic fit and set-in sleeves for traditional look. Make it your own with our Custom Ultra On-Field service, featuring full sublimation.

#7010CU MSRP: \$72.50

#7010YCU MSRP: \$69.50



**STAY-DRI**

**STYLE:** Crew Neck  
**PROFILE:** Jersey  
**AGE:** Adult, Youth  
**GENDER:** Men, Boys  
**SIZE:** S-3XL (Adult)  
 YXS-YXL (Youth)  
**FABRIC & COMPOSITION:**  
 Fly LT - 100% Polyester      Dryve LT - 100% Polyester

### SELECT BASEBALL V-NECK JERSEY

**CUSTOM** ULTRA ON-FIELD

Engineered with Richardson's Stay-Dri moisture management technology, our Select Baseball V-Neck Jersey is built for performance, comfort, and style. Customize it with our Custom Ultra On-Field service, featuring full sublimation.

#7011CU MSRP: \$72.50

#7011YCU MSRP: \$69.50



**STAY-DRI**

**STYLE:** V-Neck  
**PROFILE:** Jersey  
**AGE:** Adult, Youth  
**GENDER:** Men, Boys  
**SIZE:** S-3XL (Adult)  
 YXS-YXL (Youth)  
**FABRIC & COMPOSITION:**  
 Fly LT - 100% Polyester      Dryve LT - 100% Polyester



## SELECT BASEBALL 2-BUTTON JERSEY **NEW MODEL**

AVAILABLE  
LATE FALL 2024

**CUSTOM** **ULTRA EXPRESS**

The Select Baseball 2-Button Jersey marries classic baseball style with modern performance. Featuring Stay-Dri moisture management, set-in sleeves, and an athletic fit, while the two-button design offers adjustment at the neck. Make it yours with our Custom Ultra Express service, featuring full sublimation.

**STAY-DRI**

**STYLE:** 2-Button  
**PROFILE:** Jersey

**AGE:** Adult, Youth  
**GENDER:** Men, Boys

**SIZE:** S-3XL (Adult)  
YXS-YXL (Youth)

**FABRIC & COMPOSITION:**  
Fly-X - 100% Polyester

#7012CUX MSRP: \$65.00

#7012YCUX MSRP: \$62.00



## SELECT BASEBALL CREW NECK JERSEY **NEW MODEL**

AVAILABLE  
LATE FALL 2024

**CUSTOM** **ULTRA EXPRESS**

Step up to the plate with confidence in our Select Baseball Crew Neck Jersey. Set-in sleeves offer a classic look while Stay-Dri technology helps to regulate moisture. Make it yours with our Custom Ultra Express service, featuring full sublimation.

**STAY-DRI**

**STYLE:** Crew Neck  
**PROFILE:** Jersey

**AGE:** Adult, Youth  
**GENDER:** Men, Boys

**SIZE:** S-3XL (Adult)  
YXS-YXL (Youth)

**FABRIC & COMPOSITION:**  
Fly-X - 100% Polyester

#7010CUX MSRP: \$65.00

#7010YCUX MSRP: \$62.00



## SELECT BASEBALL V-NECK JERSEY **NEW MODEL**

AVAILABLE  
LATE FALL 2024

**CUSTOM** **ULTRA EXPRESS**

The Select Baseball V-Neck Jersey is built for the ultimate in comfort and style, featuring a tailored, athletic fit, set-in sleeves, and Stay-Dri moisture management. The V-neck construction combines classic baseball style with an easy on-and-off. Customize it with our Custom Ultra Express service, featuring full sublimation.

**STAY-DRI**

**STYLE:** V-Neck  
**PROFILE:** Jersey

**AGE:** Adult, Youth  
**GENDER:** Men, Boys

**SIZE:** S-3XL (Adult)  
YXS-YXL (Youth)

**FABRIC & COMPOSITION:**  
Fly-X - 100% Polyester

#7011CUX MSRP: \$65.00

#7011YCUX MSRP: \$62.00



# SELECT BASEBALL 2-BUTTON JERSEY NEW MODEL

**STOCK**

The Select Baseball 2-Button Jersey offers players comfort and performance with its 4-way stretch fabric featuring Stay-Dri moisture management technology. Two-button adjustment at the neck, set-in sleeves, and a tailored fit offer modern baseball style with zero distractions.

#7112 MSRP: \$30.00

#7112Y MSRP: \$28.00



 STAY-DRI

**STYLE:** 2-Button

**SIZE:** S-3XL (Adult)

**PROFILE:** Jersey

YS-YXL (Youth)

**AGE:** Adult, Youth

**GENDER:** Men, Boys

**FABRIC & COMPOSITION:**

4-Way Stretch Jersey - 92% Polyester/8% Spandex



Black/White



Grey/White



Navy/White



Red/White



Royal/White



White/White



### PTS BASEBALL STRAIGHT PANT

**CUSTOM** ULTRA ON-FIELD

Conquer the field with the PTS Baseball Straight Pant, featuring a Flex-Grip waistband and heavyweight, four-way stretch fabric for ultimate comfort and flexibility. Open-cuff construction and enhanced with a double-layer knee and sliding liner, these pants promise style and durability in every stride and slide. Make it your own with our Custom Ultra On-Field service, featuring sublimation and HYPR Twill.

 STAY-DRI

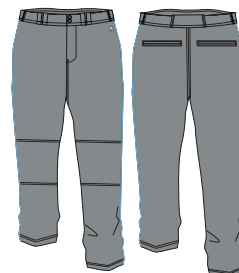
**STYLE:** Full-Length Straight      **AGE:** Adult, Youth      **SIZE:** S-3XL (Adult)  
**PROFILE:** Pant      **GENDER:** Men, Boys      YS-YXL (Youth)

**FABRIC & COMPOSITION:**  
 Produra - 100% Polyester      Protek - 100% Polyester

#PTS8020CU MSRP: \$110.00

#PTS8020YCU MSRP: \$105.00

**DECORATION OPTIONS:** +\$0.00 Full Sublimation  
 +\$10.00 HYPR Twill on Dyed Fabric  
 +\$20.00 HYPR Twill on Sublimated Fabric



### PTS BASEBALL TAPERED PANT

**CUSTOM** ULTRA ON-FIELD

The tapered design of our PTS Baseball Tapered Pant creates a clean, modern look on the diamond, while a Flex-Grip waistband and Max-Motion gusset offer enhanced fit and performance. Make it your own with our Custom Ultra On-Field service, featuring sublimation and HYPR Twill – our premium tackle twill.

 STAY-DRI

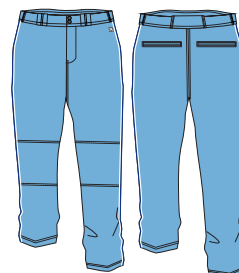
**STYLE:** Full-Length Tapered      **AGE:** Adult, Youth      **SIZE:** S-3XL (Adult)  
**PROFILE:** Pant      **GENDER:** Men, Boys      YS-YXL (Youth)

**FABRIC & COMPOSITION:**  
 Produra - 100% Polyester      Protek - 100% Polyester

#PTS8120CU MSRP: \$110.00

#PTS8120YCU MSRP: \$105.00

**DECORATION OPTIONS:** +\$0.00 Full Sublimation  
 +\$10.00 HYPR Twill on Dyed Fabric  
 +\$20.00 HYPR Twill on Sublimated Fabric



### PTS BASEBALL KNICKER PANT

**CUSTOM** ULTRA ON-FIELD

Combining a classic baseball look with modern Richardson performance, the PTS Baseball Knicker Pant is cut shorter, giving a nod to a more traditional baseball pant. Customize it with our Custom Ultra On-Field service, featuring sublimation and HYPR Twill – our premium tackle twill.

 STAY-DRI

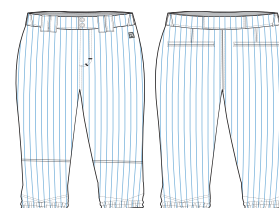
**STYLE:** Knicker      **AGE:** Adult, Youth      **SIZE:** S-3XL (Adult)  
**PROFILE:** Pant      **GENDER:** Men, Boys      YS-YXL (Youth)

**FABRIC & COMPOSITION:**  
 Produra - 100% Polyester      Protek - 100% Polyester

#PTS8022CU MSRP: \$110.00

#PTS8022YCU MSRP: \$105.00

**DECORATION OPTIONS:** +\$0.00 Full Sublimation  
 +\$10.00 HYPR Twill on Dyed Fabric  
 +\$20.00 HYPR Twill on Sublimated Fabric



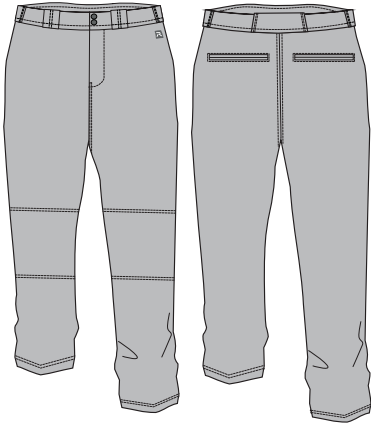
# PTS BASEBALL TAPERED PANT **NEW MODEL**

**STOCK**

Tailored to the ankle, the PTS Baseball Tapered Pant offers a streamlined, modern look. Complete with a Flex-Grip waistband, heavyweight, 4-way stretch fabric, double-layer knee, and sliding liner, this pant brings comfort and durability to the diamond inning after inning.

#PTS8120 MSRP: \$55.00

#PTS8120Y MSRP: \$51.00



**STYLE:** Full-Length Tapered  
**PROFILE:** Pant  
**AGE:** Adult, Youth  
**GENDER:** Men, Boys  
**FABRIC & COMPOSITION:**  
 Heavyweight 4-Way Stretch Warp Knit - 95% Polyester/5% Spandex

**SIZE:** S-3XL (Adult)  
 YS-YXL (Youth)



Grey



White

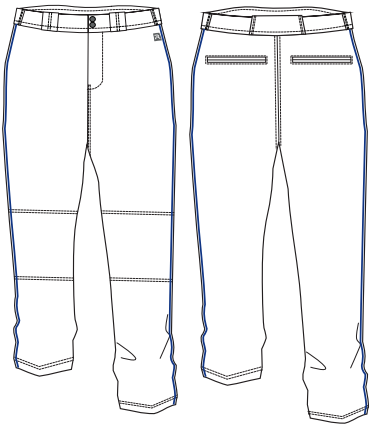
# PTS BASEBALL PIPED TAPERED PANT **NEW MODEL**

**STOCK**

The PTS Baseball Piped Tapered Pant features a fitted look thanks to its tapered design, while contrast leg piping adds a pop of color. Engineered to perform thanks to a Flex-Grip waistband, heavyweight 4-way stretch fabric, a double-layer knee, and sliding liner.

#PTS8120P MSRP: \$57.00

#PTS8120PY MSRP: \$53.00



**STYLE:** Full-Length Tapered  
**PROFILE:** Pant  
**AGE:** Adult, Youth  
**GENDER:** Men, Boys  
**FABRIC & COMPOSITION:**  
 Heavyweight 4-Way Stretch Warp Knit - 95% Polyester/5% Spandex

**SIZE:** S-3XL (Adult)  
 YS-YXL (Youth)



Grey/Black



Grey/Navy



Grey/Red



Grey/Royal



White/Black



White/Navy



White/Red



White/Royal

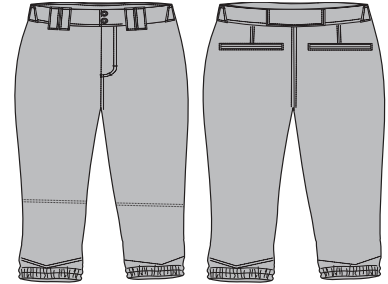
# PTS BASEBALL KNICKER PANT **NEW MODEL**

**STOCK**

Designed with a Flex-Grip waistband and heavyweight, 4-way stretch fabric, the PTS Baseball Knicker Pant provides unmatched comfort and mobility. The double-layer knee and sliding liner provide durability all season long.

#PTS8022 MSRP: \$49.00

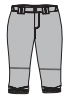
#PTS8022Y MSRP: \$45.00



**STYLE:** Knicker  
**PROFILE:** Pant  
**AGE:** Adult, Youth  
**GENDER:** Men, Boys

**SIZE:** S-3XL (Adult)  
 YS-YXL (Youth)

**FABRIC & COMPOSITION:**  
 Heavyweight 4-Way Stretch Warp Knit - 95% Polyester/5% Spandex



Grey



White

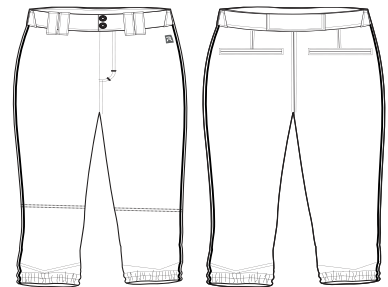
# PTS BASEBALL PIPED KNICKER PANT **NEW MODEL**

**STOCK**

Crafted with heavyweight, 4-way stretch fabric and a Flex-Grip waistband, the PTS Baseball Piped Knicker Pant provides unmatched comfort and mobility, with the added style of customizable piping. The double-layer knee and sliding liner provide all-season durability.

#PTS8022P MSRP: \$51.00

#PTS8022PY MSRP: \$47.00



**STYLE:** Knicker  
**PROFILE:** Pant  
**AGE:** Adult, Youth  
**GENDER:** Men, Boys

**SIZE:** S-3XL (Adult)  
 YS-YXL (Youth)

**FABRIC & COMPOSITION:**  
 Heavyweight 4-Way Stretch Warp Knit - 95% Polyester/5% Spandex



Grey/Black



Grey/Navy



Grey/Red



Grey/Royal



White/Black



White/Navy



White/Red



White/Royal

### SELECT BASEBALL STRAIGHT PANT

**CUSTOM** ULTRA ON-FIELD

Look good and play lights out in the Select Baseball Straight Pant. Open-cuff construction combines with a Flex-Grip waistband and heavyweight, durable fabric for comfort and durability. Enhanced with a double-layer knee and Stay-Dri moisture management, these pants offer performance in every stride and slide. Make it yours with our Custom Ultra On-Field service, featuring full sublimation.

STAY-DRI

**STYLE:** Full-Length Straight  
**PROFILE:** Pant

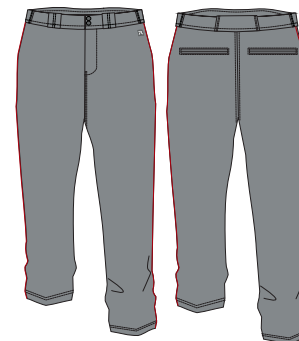
**AGE:** Adult, Youth  
**GENDER:** Men, Boys

**SIZE:** S-3XL (Adult)  
YS-YXL (Youth)

**FABRIC & COMPOSITION:**  
Protek - 100% Polyester

#7020CU MSRP: \$84.00

#7020YCU MSRP: \$80.00



### SELECT BASEBALL TAPERED PANT **NEW MODEL**

AVAILABLE  
LATE FALL 2024

**CUSTOM** ULTRA ON-FIELD

Tailored to the ankle, the Select Baseball Tapered Pant offers a modern gameday look. Complete with a Flex-Grip waistband, heavyweight durable fabric, double-layer knee, and Stay-Dri moisture management, this pant brings comfort and durability to the diamond. Make it yours with our Custom Ultra On-Field service, featuring full sublimation.

STAY-DRI

**STYLE:** Full-Length Tapered  
**PROFILE:** Pant

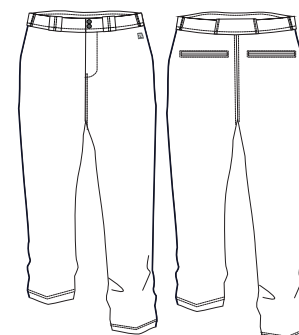
**AGE:** Adult, Youth  
**GENDER:** Men, Boys

**SIZE:** S-3XL (Adult)  
YS-YXL (Youth)

**FABRIC & COMPOSITION:**  
Protek - 100% Polyester

#7120CU MSRP: \$84.00

#7120YCU MSRP: \$80.00



### SELECT BASEBALL KNICKER PANT

**CUSTOM** ULTRA ON-FIELD

Crafted with a Flex-Grip waistband and heavyweight durable fabric, the Select Baseball Knicker Pant provides unmatched comfort and mobility. The double-layer knee provides durability slide after slide, while Stay-Dri moisture management helps regulate sweat. Customize it with our Custom Ultra On-Field service, featuring full sublimation.

STAY-DRI

**STYLE:** Knicker  
**PROFILE:** Pant

**AGE:** Adult, Youth  
**GENDER:** Men, Boys

**SIZE:** S-3XL (Adult)  
YS-YXL (Youth)

**FABRIC & COMPOSITION:**  
Protek - 100% Polyester

#7022CU MSRP: \$84.00

#7022YCU MSRP: \$80.00



### PTS SOFTBALL V-NECK JERSEY **NEW MODEL**

AVAILABLE  
LATE FALL 2024

**CUSTOM** ULTRA  
ON-FIELD

Our PTS Softball V-Neck Jersey features a tailored athletic fit designed with Stay-Dri moisture management and Max-Motion engineering for ultimate comfort and peak performance on the diamond. Customize it with our Custom Ultra On-Field service, featuring sublimation and HYPR Twill – our premium tackle twill.

#PTS8011WCU MSRP: \$105.00

#PTS8011WYCU MSRP: \$100.00



**STAY-DRI**

<b>STYLE:</b> V-Neck	<b>SIZE:</b> S-3XL [Adult] YXS-YXL [Youth]
<b>PROFILE:</b> Jersey	
<b>AGE:</b> Adult, Youth	
<b>GENDER:</b> Women, Girls	
<b>FABRIC &amp; COMPOSITION:</b>	
Ignite LT - 98% Polyester/2% Spandex	Produra - 100% Polyester
Matrix Mesh - 100% Polyester	Protok - 100% Polyester

### PTS SOFTBALL 2-BUTTON JERSEY **NEW MODEL**

AVAILABLE  
LATE FALL 2024

**CUSTOM** ULTRA  
ON-FIELD

Featuring Stay-Dri moisture management and Max-Motion engineering, the PTS Softball 2-Button Jersey offers adjustment at the neck along with a classic softball look. Make it your own with our Custom Ultra On-Field service, featuring sublimation and HYPR Twill – our premium tackle twill.

#PTS8012WCU MSRP: \$105.00

#PTS8012WYCU MSRP: \$100.00



**STAY-DRI**

<b>STYLE:</b> 2-Button	<b>SIZE:</b> S-3XL [Adult] YXS-YXL [Youth]
<b>PROFILE:</b> Jersey	
<b>AGE:</b> Adult, Youth	
<b>GENDER:</b> Women, Girls	
<b>FABRIC &amp; COMPOSITION:</b>	
Ignite LT - 98% Polyester/2% Spandex	Produra - 100% Polyester
Matrix Mesh - 100% Polyester	Protok - 100% Polyester

### SELECT SOFTBALL V-NECK JERSEY **NEW MODEL**

AVAILABLE  
LATE FALL 2024

**CUSTOM** ULTRA  
ON-FIELD

Our Select Softball V-Neck Jersey is built with set-in sleeves, Stay-Dri moisture management for the ultimate in comfort and style, inning after inning. Customize it with our Custom Ultra On-Field service, featuring full sublimation.

 STAY-DRI

**STYLE:** V-Neck  
**PROFILE:** Jersey

**AGE:** Adult, Youth  
**GENDER:** Women, Girls

**SIZE:** S-3XL (Adult)  
YXS-YXL (Youth)

**FABRIC & COMPOSITION:**  
Fly LT - 100% Polyester

Dryve LT - 100% Polyester

#7011WCU MSRP: \$72.50

#7011WYCU MSRP: \$69.50



### SELECT SOFTBALL 2-BUTTON JERSEY **NEW MODEL**

AVAILABLE  
LATE FALL 2024

**CUSTOM** ULTRA  
ON-FIELD

Our Select Softball 2-Button Jersey combines comfort with style for superior performance, featuring Stay-Dri moisture management technology and set-in sleeves. The classic two-button design offers adjustment at the neck. Make it your own with our Custom Ultra On-Field service, featuring full sublimation.

 STAY-DRI

**STYLE:** 2-Button  
**PROFILE:** Jersey

**AGE:** Adult, Youth  
**GENDER:** Women, Girls

**SIZE:** S-3XL (Adult)  
YXS-YXL (Youth)

**FABRIC & COMPOSITION:**  
Fly LT - 100% Polyester

Dryve LT - 100% Polyester

#7012WCU MSRP: \$72.50

#7012WYCU MSRP: \$69.50



### SELECT SOFTBALL V-NECK JERSEY **NEW MODEL**

AVAILABLE  
LATE FALL 2024

**CUSTOM** ULTRA  
EXPRESS

Built with Stay-Dri moisture management, the Select Softball V-Neck Jersey is built for ultimate comfort and provides a traditional look through set-in sleeves and a tailored athletic fit. Customize it with our Custom Ultra Express service, featuring full sublimation.

 STAY-DRI

**STYLE:** V-Neck  
**PROFILE:** Jersey

**AGE:** Adult, Youth  
**GENDER:** Women, Girls

**SIZE:** S-3XL (Adult)  
YXS-YXL (Youth)

**FABRIC & COMPOSITION:**  
Fly-X - 100% Polyester

#7011WCUX MSRP: \$65.00

#7011WYUCUX MSRP: \$62.00





# SELECT SOFTBALL 2-BUTTON JERSEY **NEW MODEL**

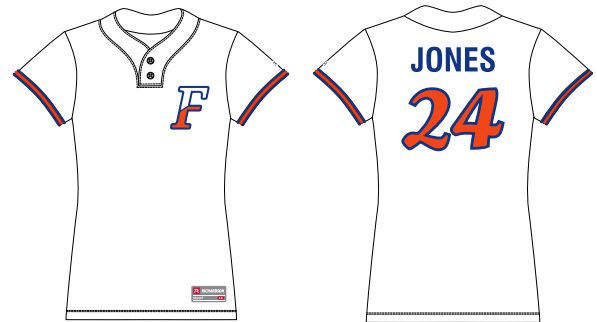
AVAILABLE  
LATE FALL 2024

**CUSTOM** **ULTRA EXPRESS**

Crafted with Stay-Dri moisture management, set-in sleeves, and a tailored athletic fit, the Select Softball 2-Button Jersey combines comfort with style for superior performance. The two-button design offers a customizable fit and a classic softball look. Make it yours with our Custom Ultra Express service, featuring full sublimation.

#7012WCUX MSRP: \$65.00

#7012WYCUX MSRP: \$62.00



**STAY-DRI**

**STYLE:** 2-Button

**SIZE:** S-3XL (Adult)

**PROFILE:** Jersey

YXS-YXL (Youth)

**AGE:** Adult, Youth

**GENDER:** Women, Girls

**FABRIC & COMPOSITION:**

Fly-X - 100% Polyester

# SELECT SOFTBALL 2-BUTTON JERSEY **NEW MODEL**

**STOCK**

Experience all-game comfort and style with our Select Softball 2-Button Jersey. The two-button neck construction offers easy adjustment, while Stay-Dri moisture management, set-in sleeves, and 4-way stretch fabric for a performance-focused fit.

#7112W MSRP: \$30.00

#7112WY MSRP: \$28.00



**STAY-DRI**

**STYLE:** 2-Button

**SIZE:** S-3XL (Adult)

**PROFILE:** Jersey

YS-YXL (Youth)

**AGE:** Adult, Youth

**GENDER:** Women, Girls

**FABRIC & COMPOSITION:**

4-Way Stretch Jersey - 92% Polyester/8% Spandex



Black/White



Grey/White



Navy/White



Red/White



Royal/White



White/White

# SOFTBALL | PANTS

**PTS** PERFORMANCE TEAM SERIES

## PTS SOFTBALL PANT **NEW MODEL**

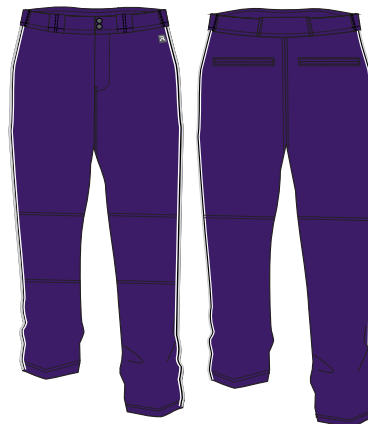
AVAILABLE  
LATE FALL 2024

**CUSTOM** ULTRA  
ON-FIELD

The PTS Softball Pant is designed for maximum comfort and range of motion. It features a 3/4 length, a Flex-Grip waistband, and heavyweight, 4-way stretch fabric to provide optimal performance on the field, while a double-layer knee and sliding liner add durability. Make it your own with our Custom Ultra On-Field service, featuring sublimation and HYPR Twill – our premium tackle twill.

#PTS8023WLCU MSRP: \$110.00

#PTS8023WYLCU MSRP: \$105.00



STAY-DRI

**STYLE:** Mid-Calf

**SIZE:** S-3XL (Adult)

**PROFILE:** Pant

YS-YXL (Youth)

**AGE:** Adult, Youth

**GENDER:** Women, Girls

**FABRIC & COMPOSITION:**

Protek - 100% Polyester

## PTS SOFTBALL PANT **NEW MODEL**

**STOCK**

The PTS Softball Pant is designed for maximum comfort and range of motion. It features a 3/4 length, a Flex-Grip waistband, and heavyweight, 4-way stretch fabric to provide optimal performance on the field, while a double-layer knee and sliding liner add durability.

#PTS8023W MSRP: \$53.00

#PTS8023WY MSRP: \$49.00



**STYLE:** Mid-Calf

**SIZE:** S-3XL (Adult)

**PROFILE:** Pant

YS-YXL (Youth)

**AGE:** Adult, Youth

**GENDER:** Women, Girls

**FABRIC & COMPOSITION:**

Heavyweight 4-Way Stretch Warp Knit - 95% Polyester/5% Spandex



Black



Grey



Navy



Red



Royal



White

# APPAREL



### PTS BASEBALL WHEELHOUSE WIND SHIRT

**CUSTOM** ULTRA ON-FIELD

Gear up for victory with our PTS Baseball Wheelhouse Wind Shirt. Designed for performance with 4-way stretch fabric and Max-Motion engineering, this wind shirt offers unparalleled flexibility and comfort. Featuring an elastic waist cinch and side zipper for a personalized fit. Customize it with our Custom Ultra On-Field service, featuring full sublimation.

#PTSWBJ100CU MSRP: \$120.00

#PTSWBJ100YU MSRP: \$116.00

IGNITE LT STAY-DRI

**STYLE:** Wind Shirt **AGE:** Adult, Youth **SIZE:** S-3XL (Adult)  
**PROFILE:** Outerwear **GENDER:** Men, Boys **YXS-YXL (Youth)**

**FABRIC & COMPOSITION:**  
 Ignite LT - 98% Polyester/2% Spandex



### PTS BASEBALL BARRAGE WIND SHIRT NEW MODEL

**STOCK**

Dominate the competition – and the elements – with our PTS Baseball Barrage Wind Shirt. Engineered to perform, it features 4-way stretch fabric, fluorine-free water resistance, and an elastic waist cinch for a customizable fit.

#PTS4010T MSRP: \$52.00

#PTS4010TY MSRP: \$51.00

**STYLE:** Wind Shirt **AGE:** Adult, Youth **SIZE:** S-3XL (Adult)  
**PROFILE:** Outerwear **GENDER:** Men, Boys **YXS-YXL (Youth)**

**FABRIC & COMPOSITION:**  
 4-Way Stretch Woven - 94% Polyester/6% Spandex



Black



Charcoal



Navy



Red



Royal

### PTS BASEBALL BARRAGE WIND JACKET NEW MODEL

**STOCK**

The PTS Baseball Barrage Wind Jacket is your shield against the elements when performance counts. Stay agile and dry with 4-way stretch fabric and fluorine-free water resistance. A scuba hood provides enhanced coverage and a modern look, while an elastic waist cinch offers a customizable fit.

#PTS4005T MSRP: \$64.00

**STYLE:** Jacket **AGE:** Adult **SIZE:** S-3XL  
**PROFILE:** Outerwear **GENDER:** Men

**FABRIC & COMPOSITION:**  
 4-Way Stretch Woven - 94% Polyester/6% Spandex



Black



Charcoal



Navy



Red



Royal

**FIVE-TOOL HOODIE**

**CUSTOM ULTRA ON-FIELD**

Gear up for game-changing performance with our classic Five-Tool Hoodie. Engineered for performance, it features Stay-Dri moisture management, 4-way stretch fabric, and Max-Motion engineering. An elastic waist cinch offers a customized fit, while the kangaroo pouch provides convenient storage. Customize it with our Custom Ultra service, featuring full sublimation.

**STAY-DRI**

**STYLE:** Hoodie **AGE:** Adult, Youth **SIZE:** S-3XL (Adult)  
**PROFILE:** Top **GENDER:** Men, Boys **YXS-YXL (Youth)**

**FABRIC & COMPOSITION:**  
 FLX - 91% Polyester/9% Elastane

#FTH100CU MSRP: \$120.00

#FTH100YCU MSRP: \$116.00



**BOOST LONG-SLEEVE TEE NEW MODEL**

AVAILABLE  
LATE FALL 2024

**CUSTOM ULTRA EXPRESS**

Our Boost Long-Sleeve Tee offers superior performance no matter what you throw at it. 4-way stretch fabric and Stay-Dri moisture management technology offer non-stop comfort during intense workouts, while its tailored athletic fit ensures this tee is at home in the gym or on the diamond. Make it yours with our Custom Ultra Express service, featuring full sublimation.

**STAY-DRI**

**STYLE:** Long-Sleeve Shirt **AGE:** Adult, Youth **SIZE:** S-3XL (Adult)  
**PROFILE:** Top **GENDER:** Men, Boys **YXS-YXL (Youth)**

**FABRIC & COMPOSITION:**  
 FLY-X - 100% Polyester

#1005TLSCUX MSRP: \$67.00

#1005TYLSCUX MSRP: \$64.00



**BOOST SHORT-SLEEVE TEE NEW MODEL**

AVAILABLE  
LATE FALL 2024

**CUSTOM ULTRA EXPRESS**

Designed for maximum performance, the Boost Short-Sleeve Tee features 4-way stretch fabric and Stay-Dri moisture management technology, while its tailored athletic fit ensures optimal comfort. Customize it with our Custom Ultra Express service, featuring full sublimation.

**STAY-DRI**

**STYLE:** Short-Sleeve Shirt **AGE:** Adult, Youth **SIZE:** S-3XL (Adult)  
**PROFILE:** Top **GENDER:** Men, Boys **YXS-YXL (Youth)**

**FABRIC & COMPOSITION:**  
 FLY-X - 100% Polyester

#1005TSSCUX MSRP: \$63.00

#1005TYSSCUX MSRP: \$60.00



## RISE LONG-SLEEVE TEE **NEW MODEL**

**STOCK**

The ultimate fusion of comfort and durability, our Rise Long-Sleeve Tee is built with 4-way stretch fabric and Stay-Dri moisture management to keep you comfortable and dry through every movement. With an anti-microbial finish and precision flatlock stitching, this tee is built to go the distance.

#1000TLS MSRP: \$26.00

#1000TLY MSRP: \$23.00



**STAY-DRI**

**STYLE:** Long-Sleeve Shirt

**SIZE:** S-3XL (Adult)

**PROFILE:** Top

YS-YXL (Youth)

**AGE:** Adult, Youth

**GENDER:** Men, Boys

**FABRIC & COMPOSITION:**

Performance Jacquard Knit - 82% Polyester/18% Spandex



Black



Grey



Navy



Red



Royal

## RISE SHORT-SLEEVE TEE **NEW MODEL**

**STOCK**

Performance and comfort align in the Rise Short-Sleeve Tee. Engineered with 4-way stretch fabric and Stay-Dri moisture management, you'll stay dry and comfortable during even the most intense workout. The anti-microbial finish and precision flatlock stitching guarantee lasting durability.

#1000TSS MSRP: \$22.00

#1000TSSY MSRP: \$19.50



**STAY-DRI**

**STYLE:** Short-Sleeve Shirt

**SIZE:** S-3XL (Adult)

**PROFILE:** Top

YS-YXL (Youth)

**AGE:** Adult, Youth

**GENDER:** Men, Boys

**FABRIC & COMPOSITION:**

Performance Jacquard Knit - 82% Polyester/18% Spandex



Black



Grey



Navy



Red



Royal

# CHARGE HOODIE **NEW MODEL**

**STOCK**

Conquer any challenge head-on with our Charge Hoodie. Built with 4-way stretch fabric and featuring Max-Motion engineering, ensuring unrestricted dynamic movement. A scuba hood adds protection from the elements, while a tunnel pocket with cell phone storage blends functionality and style for unstoppable performance.

#2000TLS MSRP: \$55.00

#2000TLY MSRP: \$51.00

**STYLE:** Hoodie

**SIZE:** S-3XL (Adult)

**PROFILE:** Top

YS-YXL (Youth)

**AGE:** Adult, Youth

**GENDER:** Men, Boys

**FABRIC & COMPOSITION:**

Performance Fleece - 92% Polyester/8% Spandex



Black



Grey



Navy



Red



Royal

# SALVO POLO **NEW MODEL**

**STOCK**

Versatile performance and style define our Salvo Polo. Crafted with Stay-Dri moisture management technology, 4-way stretch fabric, and an anti-microbial finish to keep you comfortable and fresh all day. Meanwhile, a 3-button placket and stand-up collar offer functional style for any occasion.

#3000T MSRP: \$39.00

 STAY-DRI

**STYLE:** Polo

**SIZE:** S-3XL

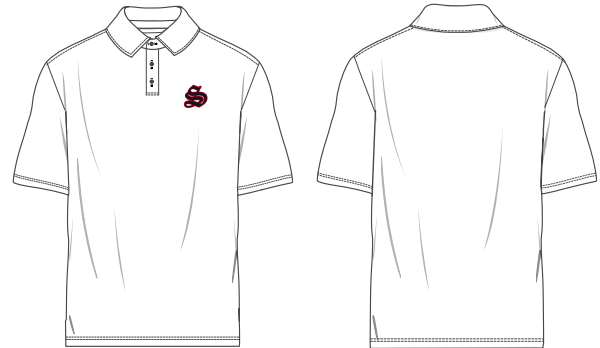
**PROFILE:** Top

**AGE:** Adult

**GENDER:** Men

**FABRIC & COMPOSITION:**

4-Way Stretch Brushed Knit - 90% Polyester/10% Spandex



Black



Grey



Navy



Red



Royal



White

## VERTEX QUARTER ZIP **NEW MODEL**

**STOCK**

Prioritizing performance and comfort, our Vertex Quarter Zip is engineered with 4-way stretch fabric and Stay-Dri moisture management to keep you comfortable before, during, and after your workouts. Enhancements like precision flatlock stitching and a zipper guard with chin protector deliver distraction-free performance.

#4000T MSRP: \$50.00

 STAY-DRI

STYLE: Quarter Zip Pullover  
PROFILE: Top

AGE: Adult  
GENDER: Men

SIZE: S-3XL

FABRIC & COMPOSITION: 4-Way Stretch Cationic Dyed Jersey - 94% Polyester/6% Spandex



Black



Grey



Navy

## CHARGE JOGGER **NEW MODEL**

**STOCK**

Performance and comfort converge in our Charge Jogger. A soft jacquard elastic waistband with internal drawcord offers a customized fit, while side pockets and a back welt pocket with hidden zipper offer versatile storage.

#5000B MSRP: \$48.00

STYLE: Pant  
PROFILE: Bottom

AGE: Adult  
GENDER: Men

SIZE: S-3XL

FABRIC & COMPOSITION: Performance Fleece - 92% Polyester/8% Spandex



Black



Grey



Navy

## VERVE SHORT **NEW MODEL**

**STOCK**

Our Verve Short is your go-to for dynamic performance. With 4-way stretch fabric and a versatile 7" inseam, you can enjoy all-day performance and wearability. The soft jacquard elastic waistband with internal drawcord offers a custom fit, while side pockets and a back welt pocket with hidden zipper offer convenient storage.

#6000B MSRP: \$36.00

STYLE: Pant  
PROFILE: Bottom

AGE: Adult  
GENDER: Men

SIZE: S-3XL

FABRIC & COMPOSITION: 4-Way Stretch Woven - 94% Polyester/6% Spandex



Black



Charcoal



Navy





## PTS SOFTBALL STEP-UP JACKET **NEW MODEL**

AVAILABLE  
LATE FALL 2024

**CUSTOM** ULTRA  
ON-FIELD

Complete your team's look from practice to gameday with Richardson's PTS Softball Step-Up Jacket. Engineered with Stay-Dri moisture management and 4-way stretch fabric, this jacket ensures optimal comfort and performance while its hidden kangaroo pouch keeps essentials close at hand without sacrificing style or mobility. Make it yours with our Custom Ultra On-Field service, featuring full sublimation.

#PTS4015TWCU MSRP: \$120.00

IGNITE LT STAY-DRI

**STYLE:** Pullover

**PROFILE:** Outerwear

**AGE:** Adult, Youth

**GENDER:** Women, Girls

**FABRIC & COMPOSITION:**

Ignite LT - 98% Polyester/2% Spandex

**SIZE:** S-3XL (Adult)

YXS-YXL (Youth)



**WOMEN'S DART PERFORMANCE HOODIE** **NEW MODEL**

AVAILABLE  
LATE FALL 2024

**CUSTOM** **ULTRA ON-FIELD**

With Stay-Dri moisture management and 4-way stretch fabric, the Women's Dart Performance Hoodie keeps you dry and ready to perform. The tunnel pocket adds quick storage, while the mesh-lined scuba hood offers protection from the elements. Make it yours with our Custom Ultra service, featuring full sublimation.

#2005TWLSCU MSRP: \$130.00

**STAY-DRI**

**STYLE:** Hoodie  
**PROFILE:** Top

**AGE:** Adult, Youth  
**GENDER:** Women, Girls

**SIZE:** S-3XL (Adult)  
YXS-YXL (Youth)

**FABRIC & COMPOSITION:**  
FLX - 91% Polyester/9% Elastane



**WOMEN'S BOOST LONG-SLEEVE TEE** **NEW MODEL**

AVAILABLE  
LATE FALL 2024

**CUSTOM** **ULTRA EXPRESS**

Prepare to elevate your game with our Women's Boost Long-Sleeve Tee. 4-way stretch fabric and Stay-Dri moisture management offer non-stop comfort during intense workouts, while its tailored athletic fit ensures this tee works for you right at home in the gym or on the diamond. Make it yours with our Custom Ultra Express service, featuring full sublimation.

#1005TWLSCUX MSRP: \$67.00

**STAY-DRI**

**STYLE:** Long-Sleeve Shirt  
**PROFILE:** Top

**AGE:** Adult, Youth  
**GENDER:** Women, Girls

**SIZE:** S-3XL (Adult)  
YXS-YXL (Youth)

**FABRIC & COMPOSITION:**  
FLY-X - 100% Polyester



**WOMEN'S BOOST SHORT-SLEEVE TEE** **NEW MODEL**

AVAILABLE  
LATE FALL 2024

**CUSTOM** **ULTRA EXPRESS**

Designed for maximum performance, the Women's Boost Short-Sleeve Tee features 4-way stretch fabric and Stay-Dri moisture management while its tailored athletic fit ensures optimal comfort. Customize it with our Custom Ultra Express service, featuring full sublimation.

#1005TWSSCUX MSRP: \$63.00

**STAY-DRI**

**STYLE:** Short-Sleeve Shirt  
**PROFILE:** Top

**AGE:** Adult, Youth  
**GENDER:** Women, Girls

**SIZE:** S-3XL (Adult)  
YXS-YXL (Youth)

**FABRIC & COMPOSITION:**  
FLY-X - 100% Polyester



# ACCESSORIES



## PTS CUSTOM SENTINEL SOCK

**CUSTOM** ULTRA ON-FIELD

The PTS Custom Sentinel Sock is engineered for gameday performance and comfort. Stay-Dri moisture management keeps you cool and dry, while reinforced underfoot reinforcement and knit-in arch support provide all-game comfort. Customize to your specifications with our Custom Ultra On-Field service.

#PTS500SKCU MSRP: \$25.00



**STAY-DRI**

**STYLE:** Knee High    **AGE:** Adult, Youth    **SIZE:** Small: 3-5 (Youth) Large: 8-12  
**PROFILE:** Sock    **GENDER:** Men, Boys    Medium: 5-7    XL: 13-14

**FABRIC & COMPOSITION:** Micro-Poly Blend - 44% Polyester/42% Nylon/13% Elastic/1% Spandex

## PTS SENTINEL SOCK **NEW MODEL**

**STOCK**

Dominate the diamond with our stock PTS Sentinel Sock, featuring Stay-Dri moisture management technology, underfoot reinforcement for durable cushioning, and knit-in arch support to keep your feet fresh from the first inning to the last.

#PTS500SK MSRP: \$16.00



**STAY-DRI**

**STYLE:** Knee High    **AGE:** Adult, Youth    **SIZE:** Small: 3-5 (Youth) Large: 8-12  
**PROFILE:** Sock    **GENDER:** Men, Boys    Medium: 5-7    XL: 13-14

**FABRIC & COMPOSITION:** Knitted Polyester Blend - 49% Polyester/48% Nylon/2% Rubber/1% Spandex



Black



Dark Green



Navy



Purple



Red



Royal



Black/Red-White



Navy/Columbia Blue-White



Navy/Red-White

## PTS SIGNATURE BELT

**STOCK**

Complete your team's gameday look with our PTS Signature Belt. Built to last with premium powder-coated metal hardware and PU-coated synthetic leather tabs, while heavy-duty elastic webbing ensures a versatile, performance-focused fit.

#PTS1BLT MSRP: \$17.00

#PTS1BLTY MSRP: \$15.00



**PROFILE:** Belt  
**AGE:** Adult, Youth  
**GENDER:** Men

**SIZE:** Adult 27.5" - 43"  
 Youth 23.5" - 34"



Black



Dark Green



Gold



Maroon



Orange



Red



Royal



# INDEX

## HEADWEAR

172.....	STOCK	16
185.....	STOCK	18
212.....	STOCK	19
214.....	STOCK	19
414.....	STOCK	17
495.....	STOCK	17
512 <b>NEW</b> .....	STOCK	14
514.....	STOCK	14
585.....	STOCK	18
632.....	STOCK	15
707.....	STOCK	20
709.....	STOCK	20
PTS20 <b>Y</b> .....	STOCK	6
PTS20C.....	CUSA	7
PTS20CU.....	CUOF	7
PTS20CX/CXP.....	CX	7
PTS20M.....	STOCK	8
PTS20MCU.....	CUSA	8
PTS30.....	STOCK	4
PTS30C.....	CUSA	5
PTS30CU.....	CUOF	5
PTS50.....	STOCK	12
PTS50CU.....	CUOF	13
PTS65.....	STOCK	10
PTS65C/PTS62C.....	CUSA	11
PTS65CX.....	CX	10
PTS65CU.....	CUOF	11

## ACCESSORIES

PTS CUSTOM SENTINEL SOCK.....	CUOF	45
PTS SENTINEL SOCK <b>NEW</b> .....	STOCK	45
PTS SIGNATURE BELT <b>Y</b> .....	STOCK	45

## LEGEND

**CUSA**

CUSTOM USA

**CUOF**

CUSTOM ULTRA ON-FIELD

**CUX**

CUSTOM ULTRA EXPRESS

**CX**

CUSTOM EXPRESS

**STOCK**

STOCK

**Y**

AVAILABLE IN YOUTH SIZE

## UNIFORMS

PTS BASEBALL 2-BUTTON JERSEY <b>Y</b> .....	CUOF	22
PTS BASEBALL FAUX FULL-BUTTON JERSEY <b>Y</b> .....	CUOF	23
PTS BASEBALL FAUX FULL-BUTTON SLEEVELESS JERSEY <b>Y</b> .....	CUOF	23
PTS BASEBALL FULL-BUTTON JERSEY <b>Y</b> .....	CUOF	22
PTS BASEBALL FULL-BUTTON SLEEVELESS JERSEY <b>Y</b> .....	CUOF	23
PTS BASEBALL V-NECK JERSEY <b>Y</b> .....	CUOF	22
PTS BASEBALL KNICKER PANT <b>Y</b> .....	CUOF	27
PTS BASEBALL STRAIGHT PANT <b>Y</b> .....	CUOF	27
PTS BASEBALL TAPERED PANT <b>Y</b> .....	CUOF	27
PTS BASEBALL KNICKER PANT <b>Y</b> <b>NEW</b> .....	STOCK	29
PTS BASEBALL PIPED KNICKER PANT <b>Y</b> <b>NEW</b> .....	STOCK	29
PTS BASEBALL PIPED TAPERED PANT <b>Y</b> <b>NEW</b> .....	STOCK	28
PTS BASEBALL TAPERED PANT <b>Y</b> <b>NEW</b> .....	STOCK	28
PTS SOFTBALL 2-BUTTON JERSEY <b>Y</b> .....	CUOF	32
PTS SOFTBALL V-NECK JERSEY <b>Y</b> .....	CUOF	32
PTS SOFTBALL PANT <b>Y</b> <b>NEW</b> .....	CUOF	34
PTS SOFTBALL PANT <b>Y</b> <b>NEW</b> .....	STOCK	34
SELECT BASEBALL 2-BUTTON JERSEY <b>Y</b> .....	CUOF	24
SELECT BASEBALL CREW NECK JERSEY <b>Y</b> .....	CUOF	24
SELECT BASEBALL V-NECK JERSEY <b>Y</b> .....	CUOF	24
SELECT BASEBALL 2-BUTTON JERSEY <b>Y</b> <b>NEW</b> .....	CUX	25
SELECT BASEBALL CREW NECK JERSEY <b>Y</b> <b>NEW</b> .....	CUX	25
SELECT BASEBALL V-NECK JERSEY <b>Y</b> <b>NEW</b> .....	CUX	25
SELECT BASEBALL 2-BUTTON JERSEY <b>Y</b> <b>NEW</b> .....	STOCK	26
SELECT BASEBALL KNICKER PANT <b>Y</b> .....	CUOF	30
SELECT BASEBALL STRAIGHT PANT <b>Y</b> .....	CUOF	30
SELECT BASEBALL TAPERED PANT <b>Y</b> <b>NEW</b> .....	CUOF	30
SELECT SOFTBALL 2-BUTTON JERSEY <b>Y</b> <b>NEW</b> .....	CUOF	32
SELECT SOFTBALL V-NECK JERSEY <b>Y</b> <b>NEW</b> .....	CUOF	32
SELECT SOFTBALL 2-BUTTON JERSEY <b>Y</b> <b>NEW</b> .....	CUX	33
SELECT SOFTBALL V-NECK JERSEY <b>Y</b> <b>NEW</b> .....	CUX	32
SELECT SOFTBALL 2-BUTTON JERSEY <b>Y</b> <b>NEW</b> .....	STOCK	33

## APPAREL

PTS BASEBALL WHEELHOUSE WIND SHIRT <b>Y</b> .....	CUOF	36
PTS BASEBALL BARRAGE WIND JACKET <b>NEW</b> .....	STOCK	36
PTS BASEBALL BARRAGE WIND SHIRT <b>Y</b> <b>NEW</b> .....	STOCK	36
PTS SOFTBALL STEP-UP JACKET <b>NEW</b> .....	CUOF	42
FIVE-TOOL HOODIE <b>Y</b> .....	CUOF	37
BOOST LONG-SLEEVE TEE <b>Y</b> <b>NEW</b> .....	CUX	37
BOOST SHORT-SLEEVE TEE <b>Y</b> <b>NEW</b> .....	CUX	37
CHARGE HOODIE <b>Y</b> <b>NEW</b> .....	STOCK	39
CHARGE JOGGER <b>NEW</b> .....	STOCK	40
RISE LONG-SLEEVE TEE <b>Y</b> <b>NEW</b> .....	STOCK	38
RISE SHORT-SLEEVE TEE <b>Y</b> <b>NEW</b> .....	STOCK	38
SALVO POLO <b>NEW</b> .....	STOCK	39
VERVE SHORT <b>NEW</b> .....	STOCK	40
VERTEX QUARTER ZIP <b>NEW</b> .....	STOCK	40
WOMEN'S DART PERFORMANCE HOODIE <b>NEW</b> .....	CUOF	43
WOMEN'S BOOST LONG-SLEEVE TEE <b>NEW</b> .....	CUX	43
WOMEN'S BOOST SHORT-SLEEVE TEE <b>NEW</b> .....	CUX	43



**RICHARDSON**

*Play Ball!*